

STANDARD ARRIVAL CHART  
INSTRUMENT (STAR) - ICAO

YOSHKAR-OLA, RUSSIA

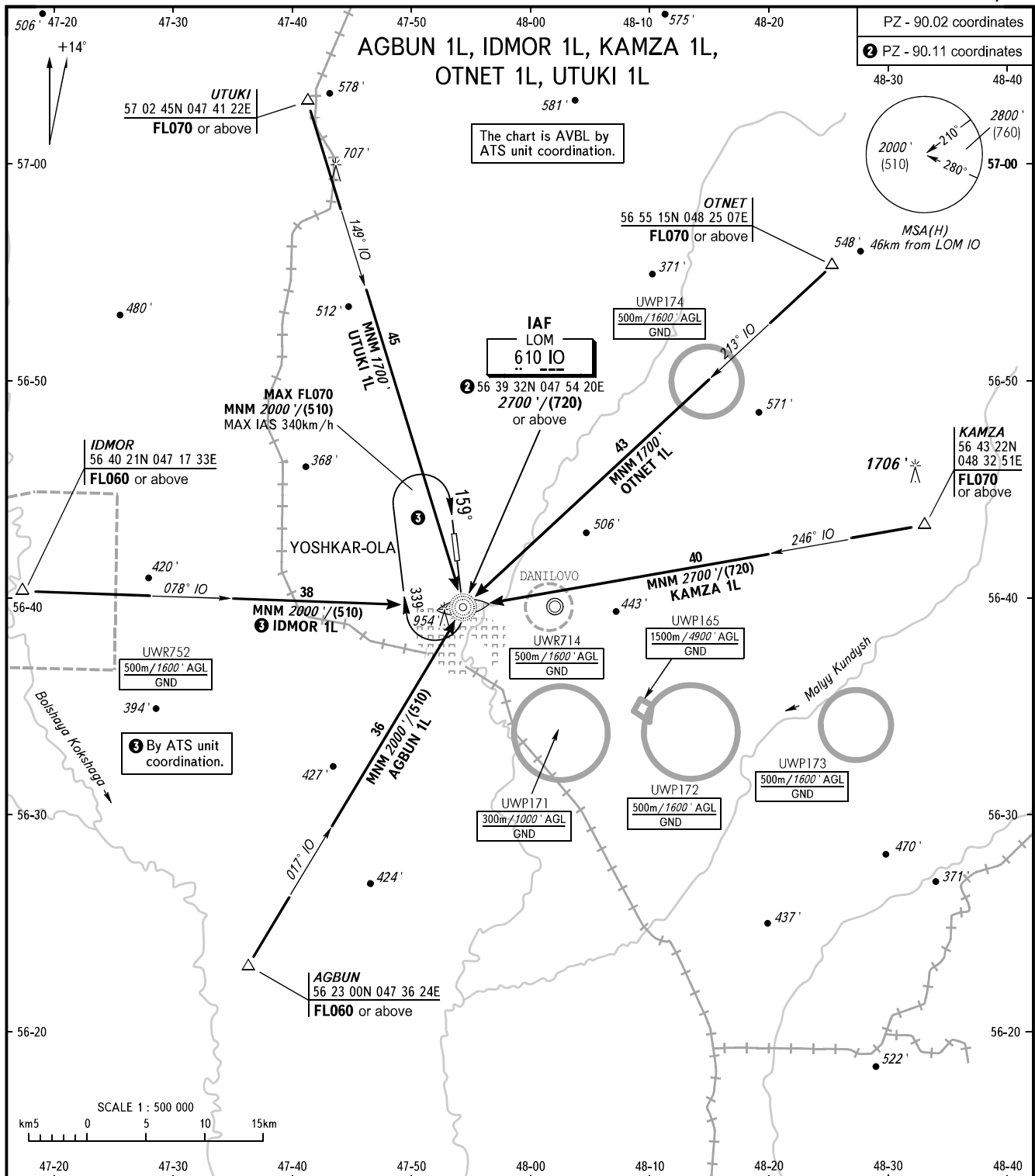
YOSHKAR-OLA

RWY 16/34

TRANSITION  
LEVEL : **1**

PZ - 90.02 coordinates

**2** PZ - 90.11 coordinates



VYSHKA **119.700**

- 1** TRANSITION LEVEL:
- FL050 when QNH is 1013 hPa (760mm mercury column) or above;
  - FL060 when QNH is 977 hPa (733mm mercury column); but less than 1013 hPa (760mm mercury column);
  - FL070 when QNH is less than 977 hPa (733mm mercury column).

|   |  |
|---|--|
| BEARINGS AND TRACKS ARE MAGNETIC<br>ALTITUDES AND ELEVATIONS IN <i>FEET</i><br>HEIGHTS IN METRES<br>DISTANCES IN KILOMETRES | Alt set: -QNH(QFE on req);<br>-hPa(mm on req). |
|---|--|