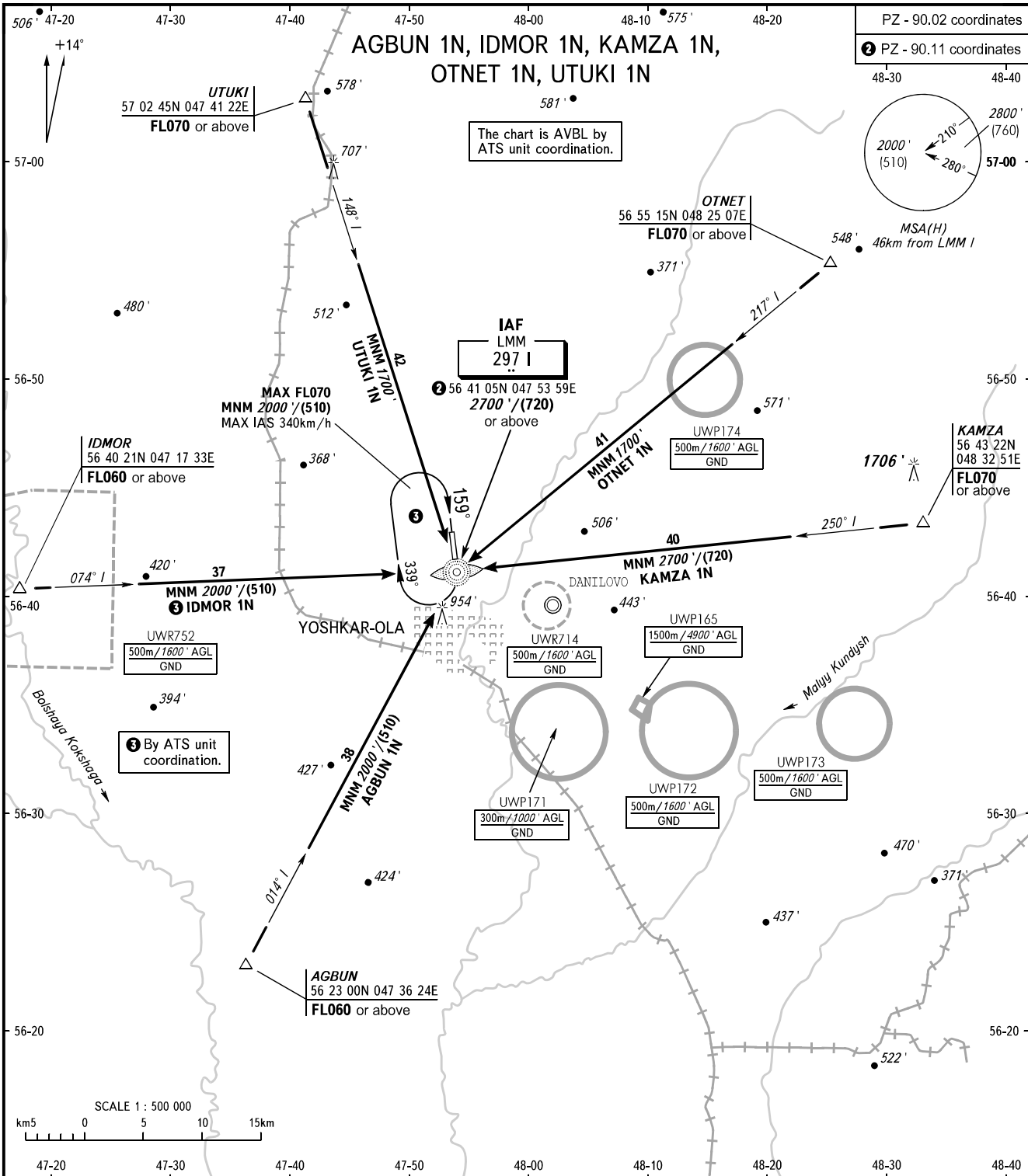


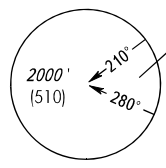
STANDARD ARRIVAL CHART  
INSTRUMENT (STAR) - ICAO

YOSHKAR-OLA, RUSSIA  
YOSHKAR-OLA  
RWY 16/34

TRANSITION  
LEVEL: **1**



PZ - 90.02 coordinates  
PZ - 90.11 coordinates



The chart is AVBL by  
ATS unit coordination.

By ATS unit  
coordination.

VYSHKA **119.700**

- 1** TRANSITION LEVEL:
- FL050 when QNH is 1013 hPa (760mm mercury column) or above;
  - FL060 when QNH is 977 hPa (733mm mercury column) or above, but less than 1013 hPa (760mm mercury column);
  - FL070 when QNH is less than 977 hPa (733mm mercury column).

BEARINGS AND TRACKS ARE MAGNETIC  
ALTITUDES AND ELEVATIONS IN FEET  
HEIGHTS IN METRES  
DISTANCES IN KILOMETRES

Alt set: -QNH(QFE on req);  
-hPa(mm on req).

CHANGE: Heading