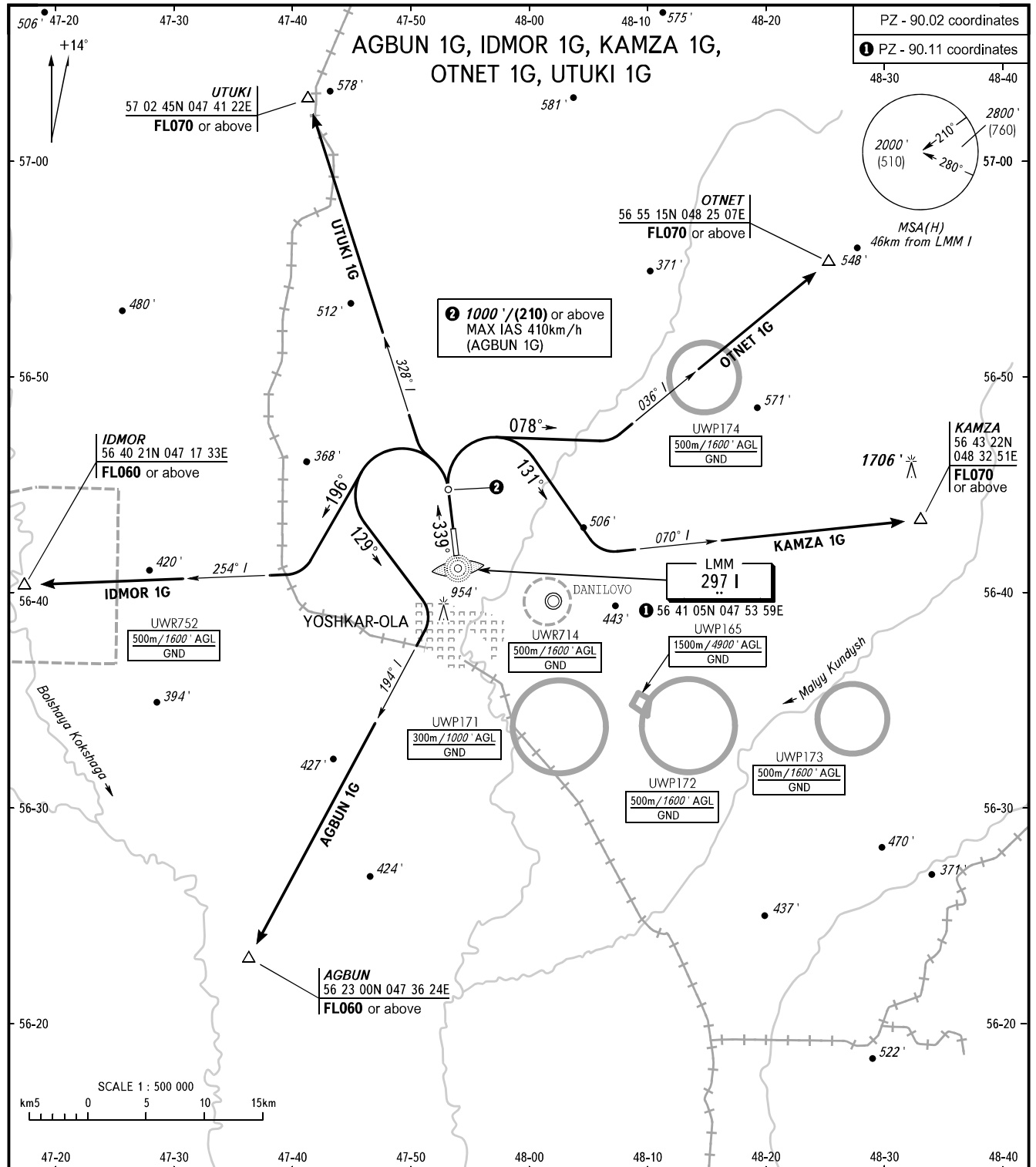


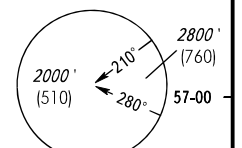
STANDARD DEPARTURE CHART
INSTRUMENT (SID) - ICAO

TRANSITION ALT: **4000'**
TRANSITION HGT: **(1120)**

YOSHKAR-OLA, RUSSIA
YOSHKAR-OLA
RWY 34



PZ - 90.02 coordinates
PZ - 90.11 coordinates



② 1000'/(210) or above
MAX IAS 410km/h
(AGBUN 1G)

LMM
297' I
① 56 41 05N 047 53 59E

VYSHKA **119.700**

WARNING:

- The minimum climb gradients (required due to the airspace structure only) are as follows:
 - 3.7% up to FL060 for SID ID MOR 1G;
 - 4.6% up to FL070 for SID OTNET 1G;
 - 4.0% up to FL070 for SID KAMZA 1G;
 - 5.2% up to FL070 for SID UTUKI 1G.
- ID MOR 1G, KAMZA 1G, OTNET 1G are AVBL by ATS unit coordination.

BEARINGS AND TRACKS ARE MAGNETIC
ALTITUDES AND ELEVATIONS IN **FEET**
HEIGHTS IN METRES
DISTANCES IN KILOMETRES

Alt set: -QNH(QFE on req);
-hPa(mm on req).

CHANGE: Heading