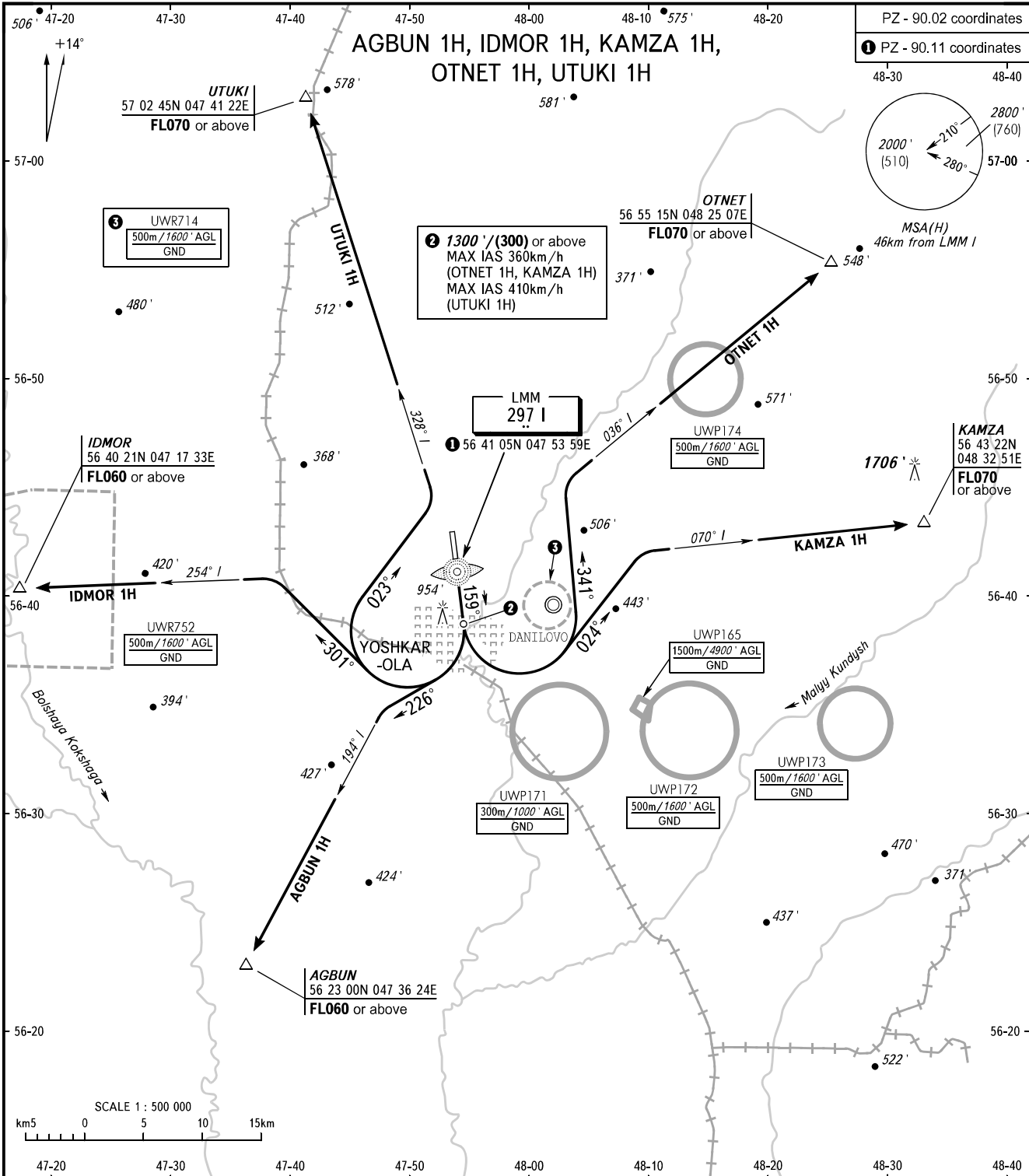


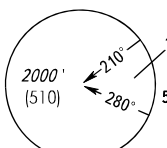
STANDARD DEPARTURE CHART  
INSTRUMENT (SID) - ICAO

TRANSITION ALT: **4000'**  
TRANSITION HGT: **(1120)**

**YOSHKAR-OLA, RUSSIA**  
YOSHKAR-OLA  
RWY 16



PZ - 90.02 coordinates  
① PZ - 90.11 coordinates



② 1300' / (300) or above  
MAX IAS 360km/h  
(OTNET 1H, KAMZA 1H)  
MAX IAS 410km/h  
(UTUKI 1H)

③ UWR714  
500m / 1600' AGL  
GND

LMM  
297 I  
① 56 41 05N 047 53 59E

UWR752  
500m / 1600' AGL  
GND

UWP174  
500m / 1600' AGL  
GND

KAMZA  
56 43 22N  
048 32 51E  
FL070 or above

UWP165  
1500m / 4900' AGL  
GND

UWP171  
300m / 1000' AGL  
GND

UWP172  
500m / 1600' AGL  
GND

UWP173  
500m / 1600' AGL  
GND

VYSHKA 119.700

- WARNING:**
- The minimum climb gradients (required due to the airspace structure only) are as follows:
    - 4.3% up to FL060 for SID AGBUN 1H;
    - 3.6% up to FL060 for SID IDMOR 1H;
    - 3.5% up to FL070 for SID OTNET 1H;
    - 4.1% up to FL070 for SID KAMZA 1H.
  - Turn before LMM I is PROHIBITED.
  - IDMOR 1H, KAMZA 1H, OTNET 1H are AVBL by ATS unit coordination.

BEARINGS AND TRACKS ARE MAGNETIC  
ALTITUDES AND ELEVATIONS IN FEET  
HEIGHTS IN METRES  
DISTANCES IN KILOMETRES

Alt set: -QNH(QFE on req);  
-hPa(mm on req).

CHANGE: Heading