

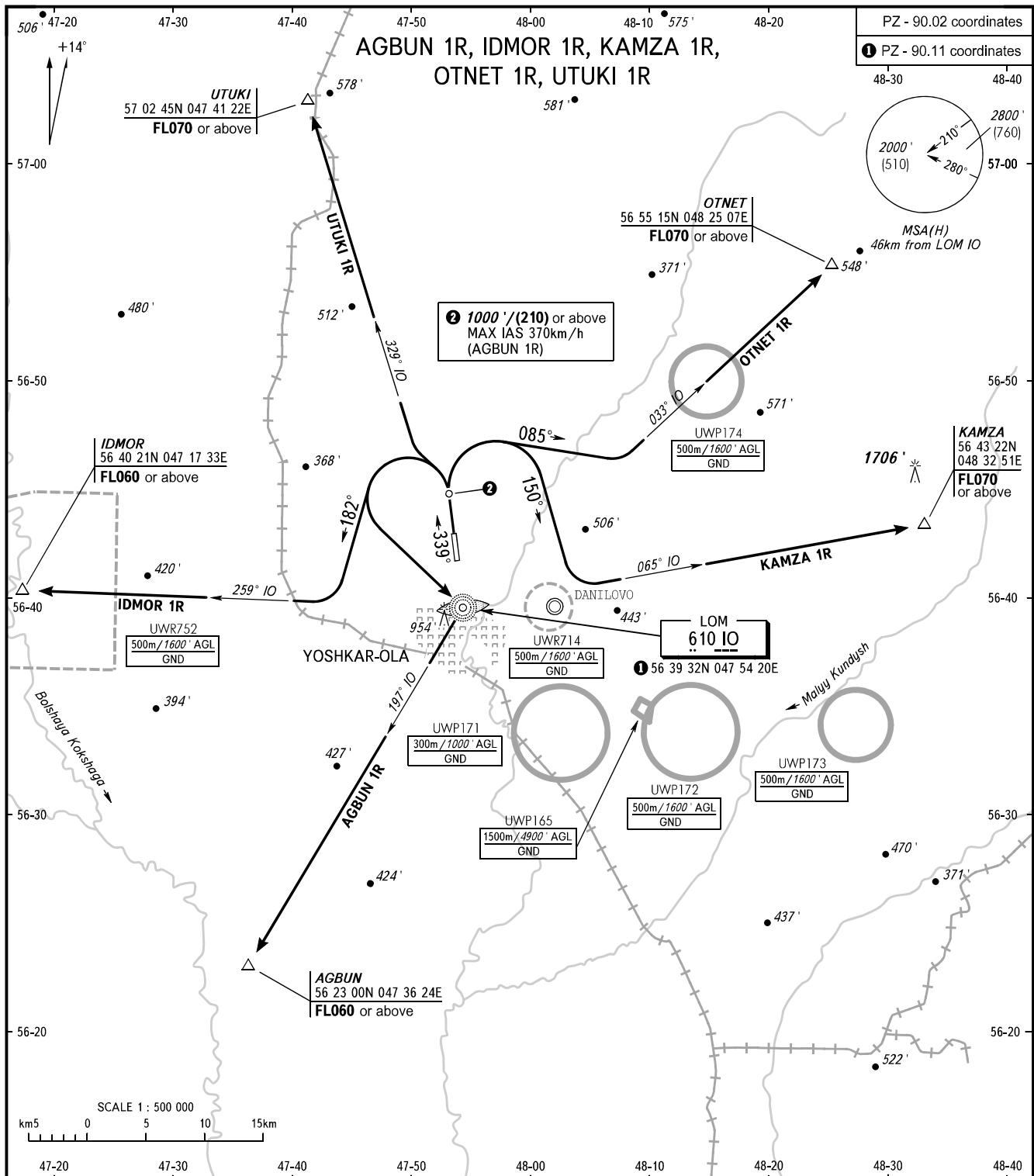
STANDARD DEPARTURE CHART
INSTRUMENT (SID) - ICAO

TRANSITION ALT: **4000'**
TRANSITION HGT: **(1120)**

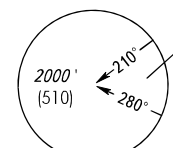
YOSHKAR-OLA, RUSSIA

YOSHKAR-OLA

RWY 34



PZ - 90.02 coordinates
① PZ - 90.11 coordinates



② 1000'/(210) or above
MAX IAS 370km/h
(AGBUN 1R)

LOM
610 IO
① 56 39 32N 047 54 20E

VYSHKA **119.700**

- WARNING:**
- The minimum climb gradients (required due to the airspace structure only) are as follows:
 - 4.6% up to FL070 for SID OTNET 1R;
 - 5.2% up to FL070 for SID UTUKI 1R.
 - Turn before passing DER is PROHIBITED.
 - AGBUN 1R, IDMOR 1R, KAMZA 1R, OTNET 1R are AVBL by ATS unit coordination.

BEARINGS AND TRACKS ARE MAGNETIC ALTITUDES AND ELEVATIONS IN FEET HEIGHTS IN METRES DISTANCES IN KILOMETRES	Alt set: -QNH(QFE on req); -hPa(mm on req).
---	--