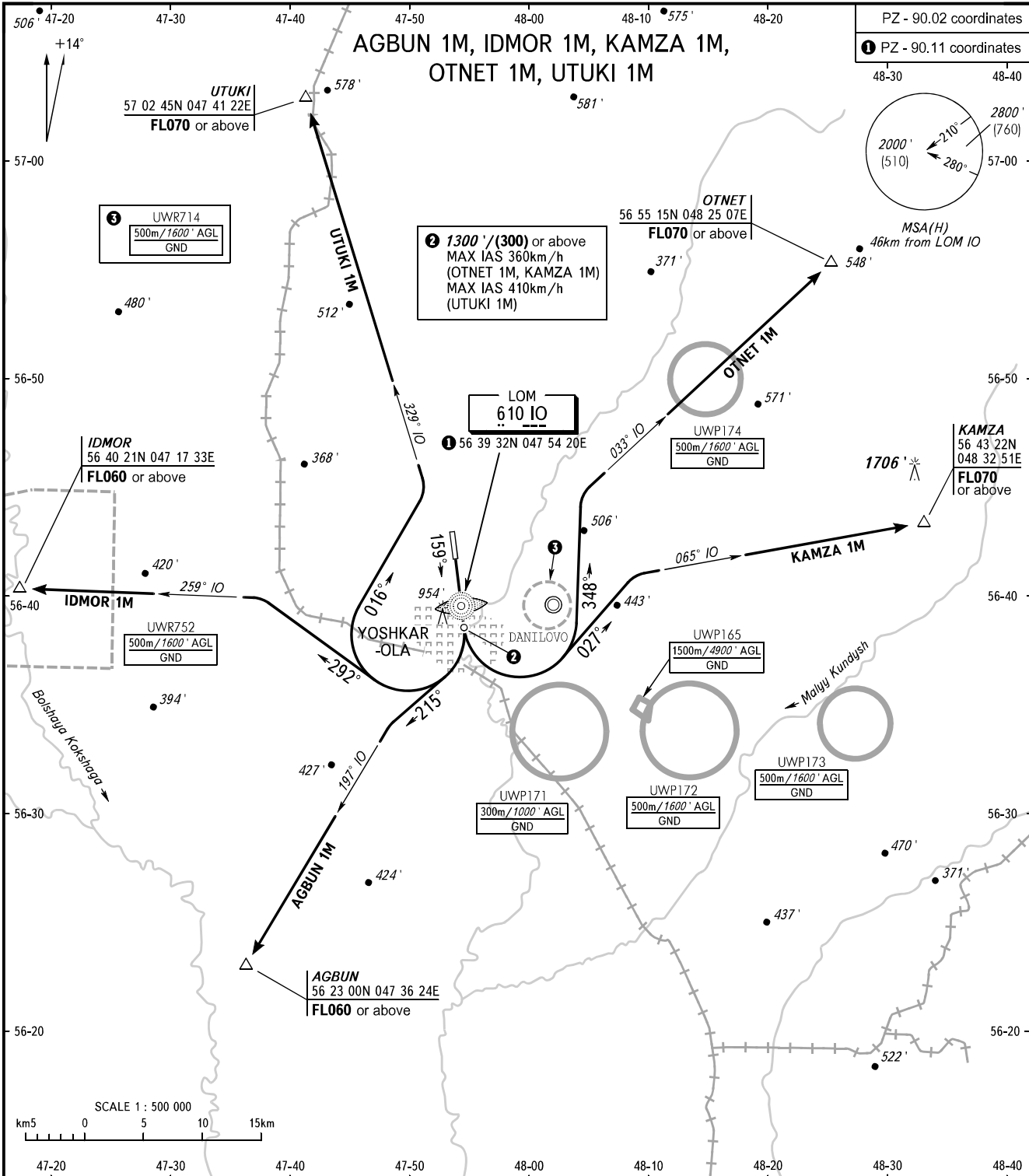


STANDARD DEPARTURE CHART  
INSTRUMENT (SID) - ICAO

TRANSITION ALT: **4000'**  
TRANSITION HGT: **(1120)**

**YOSHKAR-OLA, RUSSIA**  
YOSHKAR-OLA  
RWY 16



VYSHKA **119.700**

- WARNING:**
- The minimum climb gradients (required due to the airspace structure only) are as follows:
    - 4.3% up to FL060 for SID AGBUN 1M;
    - 3.7% up to FL060 for SID IDMOR 1M;
    - 3.6% up to FL070 for SID OTNET 1M;
    - 4.2% up to FL070 for SID KAMZA 1M.
  - Turn before LOM IO is PROHIBITED.
  - IDMOR 1M, KAMZA 1M, OTNET 1M are AVBL by ATS unit coordination.

BEARINGS AND TRACKS ARE MAGNETIC  
ALTITUDES AND ELEVATIONS IN **FEET**  
HEIGHTS IN METRES  
DISTANCES IN KILOMETRES

Alt set: -QNH(QFE on req);  
-hPa(mm on req).

CHANGE: Heading