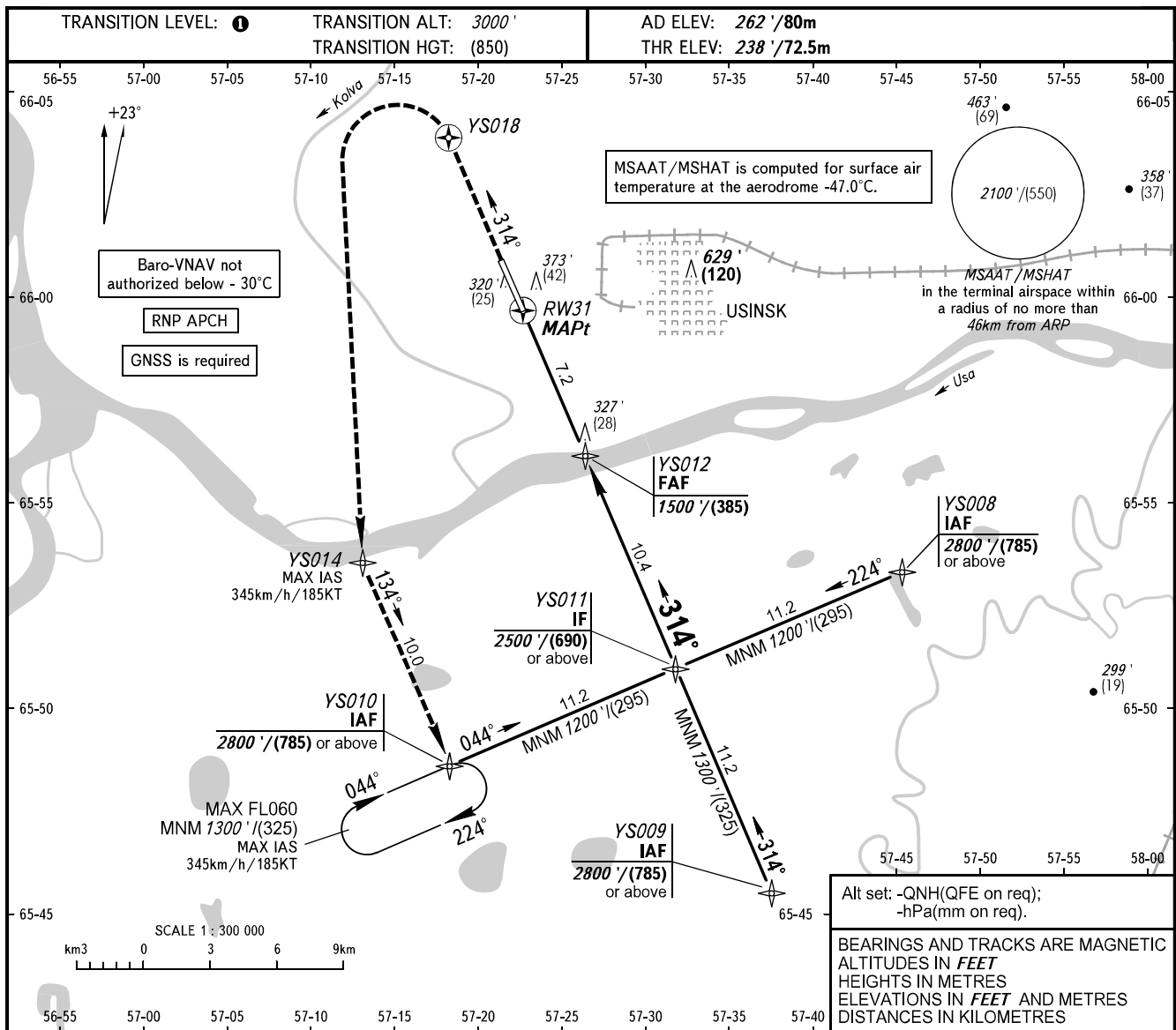


**INSTRUMENT
APPROACH
CHART - ICAO**

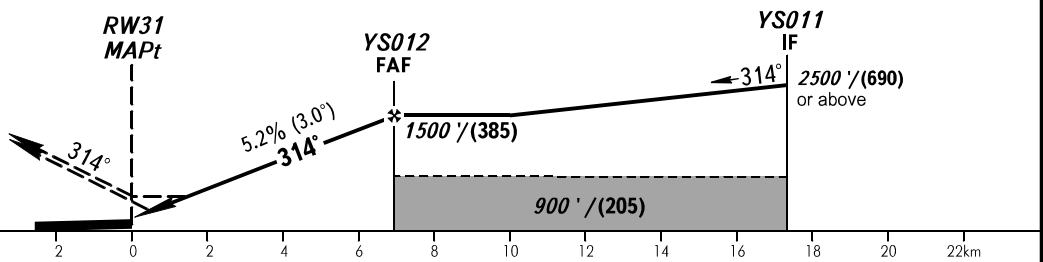
TOWER 118.200

USINSK, RUSSIA
USINSK
RNP RWY 31



MISSED APPROACH

Climb on track 314° to YS018, turn LEFT to YS014, then proceed to YS010 climbing to 2800' / (785) or above.



OCA(H)		A	B	C	D
Straight-in Approach	LNAV	620' (390') (120)	620' (390') (120)	620' (390') (120)	620' (390') (120)
	VNAV	510' (270') (85)	520' (280') (90)	530' (290') (90)	540' (300') (95)
Circling		660' (400') (125)	760' (500') (155)	860' (600') (185)	960' (690') (215)

TRANSITION LEVEL:

- FL040 when QNH is 1013 hPa (760mm mercury column) or above;
- FL050 when QNH is 977 hPa (733mm mercury column) or above, but less than 1013 hPa (760mm mercury column);
- FL060 when QNH is less than 977 hPa (733mm mercury column).

WARNING

MAPt at RW31. Timing not authorized for defining MAPt.



GROUND SPEED	km/h	150	180	210	240	270	300	330	360
	kt	81	97	113	130	146	162	178	194
RATE OF DESCENT	m/s	2.2	2.6	3.0	3.5	3.9	4.3	4.8	5.2
	ft/min	427	512	597	682	768	853	945	1024