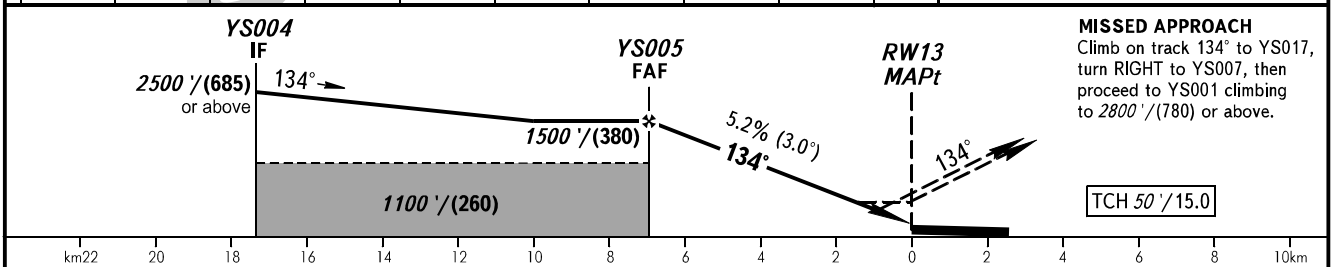
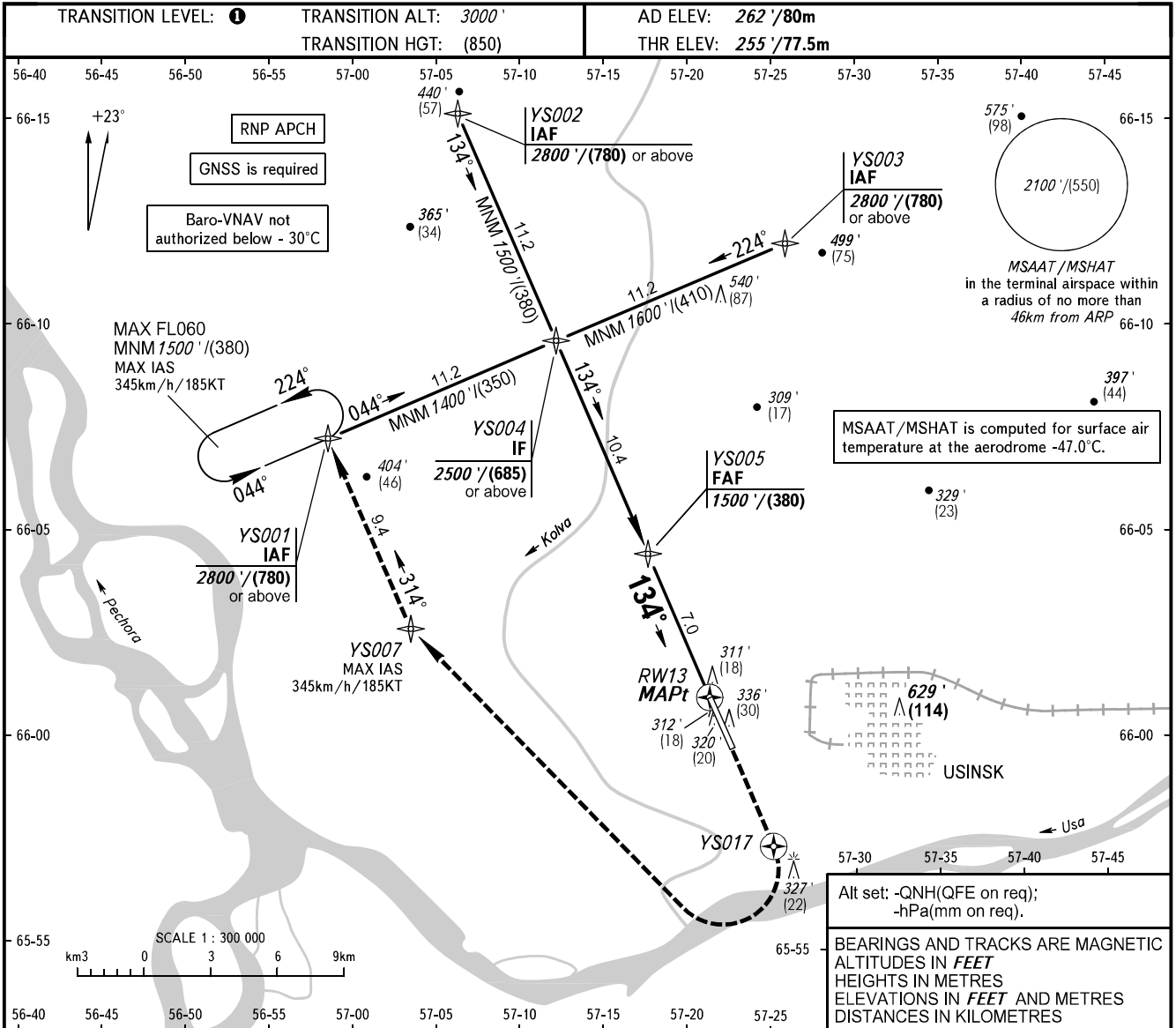


**INSTRUMENT
APPROACH
CHART - ICAO**

**USINSK, RUSSIA
USINSK
RNP RWY 13**

TOWER 118.200



OCA(H)		A	B	C	D
Straight-in Approach	LNAV	560' (310') (95)	560' (310') (95)	560' (310') (95)	560' (310') (95)
	LNAV VNAV	450' (200') (60)	460' (210') (65)	470' (220') (70)	500' (250') (75)
Circling		660' (400') (125)	760' (500') (155)	860' (600') (185)	960' (690') (215)

① TRANSITION LEVEL:
 - FL040 when QNH is 1013 hPa (760mm mercury column) or above;
 - FL050 when QNH is 977 hPa (733mm mercury column) or above, but less than 1013 hPa (760mm mercury column);
 - FL060 when QNH is less than 977 hPa (733mm mercury column).

WARNING
 MAPt at RWY13. Timing not authorized for defining MAPt.

Visual manoeuvring E of AD is PROHIBITED.

GROUND SPEED	km/h	150	180	210	240	270	300	330	360
	kt	81	97	113	130	146	162	178	194
RATE OF DESCENT	m/s	2.2	2.6	3.0	3.5	3.9	4.3	4.8	5.2
	ft/min	427	512	597	682	768	853	945	1024

CHANGE: New chart