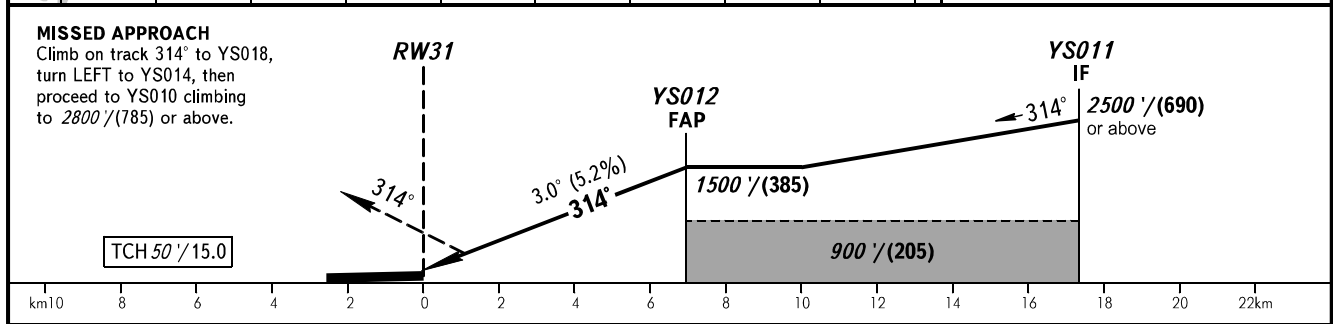
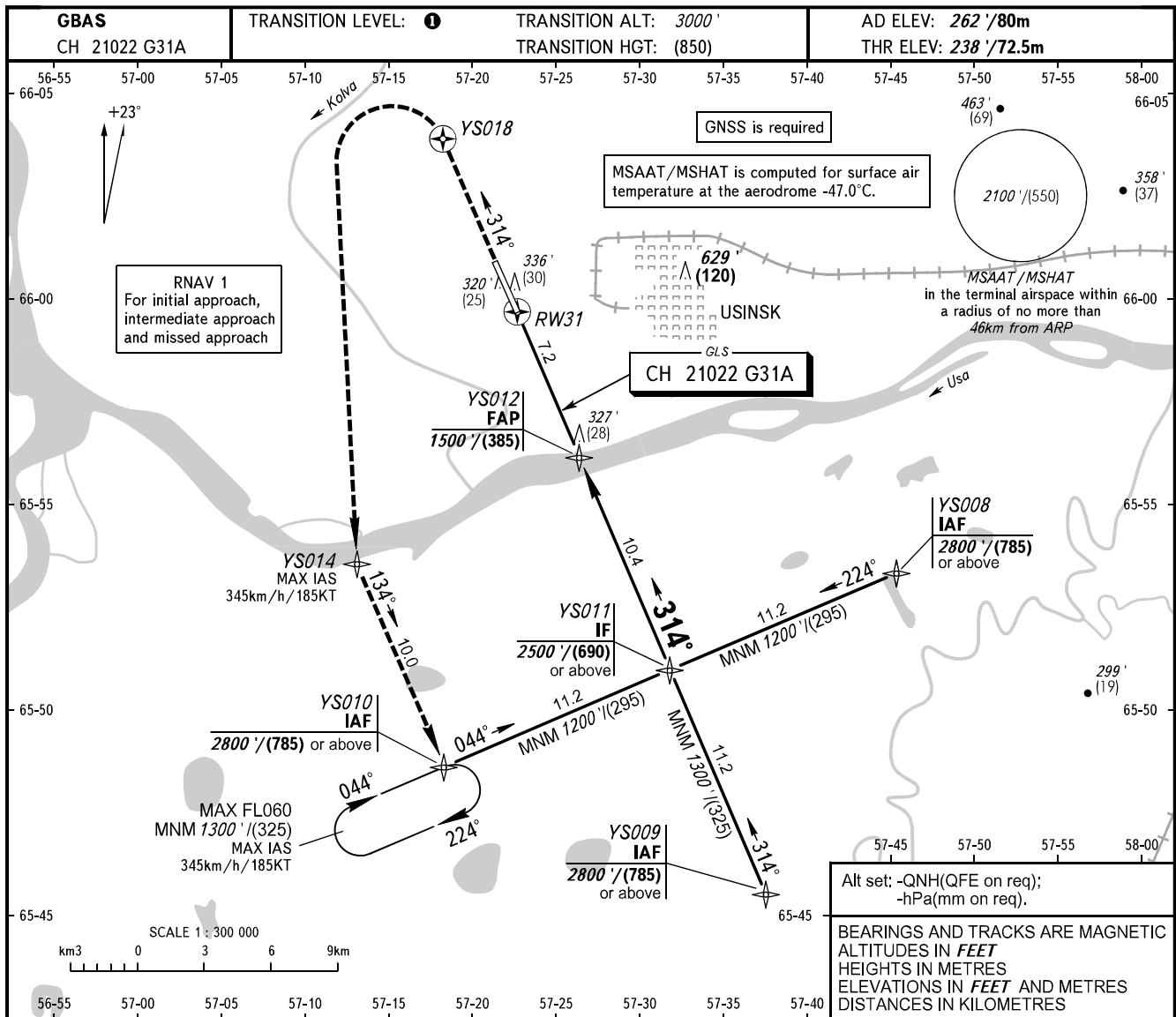


INSTRUMENT
APPROACH
CHART - ICAO

USINSK, RUSSIA
USINSK
GLS RWY 31

TOWER 118.200



OCA(H)		A	B	C	D	TRANSITION LEVEL: - FL040 when QNH is 1013 hPa (760mm mercury column) or above; - FL050 when QNH is 977 hPa (733mm mercury column) or above, but less than 1013 hPa (760mm mercury column); - FL060 when QNH is less than 977 hPa (733mm mercury column).	Visual manoeuvring E of AD is PROHIBITED.			
Straight-in Approach		465' (227') (70)	477' (239') (73)	485' (247') (76)	496' (258') (79)					
	Circling	660' (400') (125)	760' (500') (155)	860' (600') (185)	960' (690') (215)					
GROUND SPEED	km/h		150	180	210	240	270	300	330	360
	kt		81	97	113	130	146	162	178	194
RATE OF DESCENT	m/s		2.2	2.6	3.0	3.5	3.9	4.3	4.8	5.2
	ft/min		427	512	597	682	768	853	945	1024