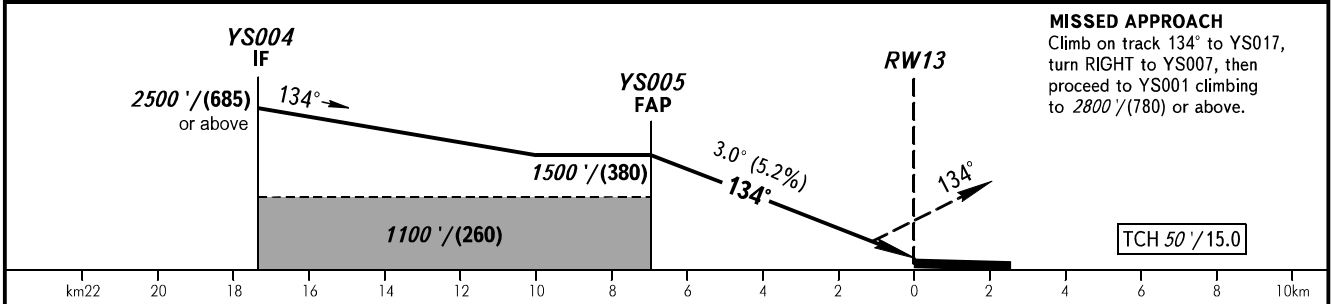
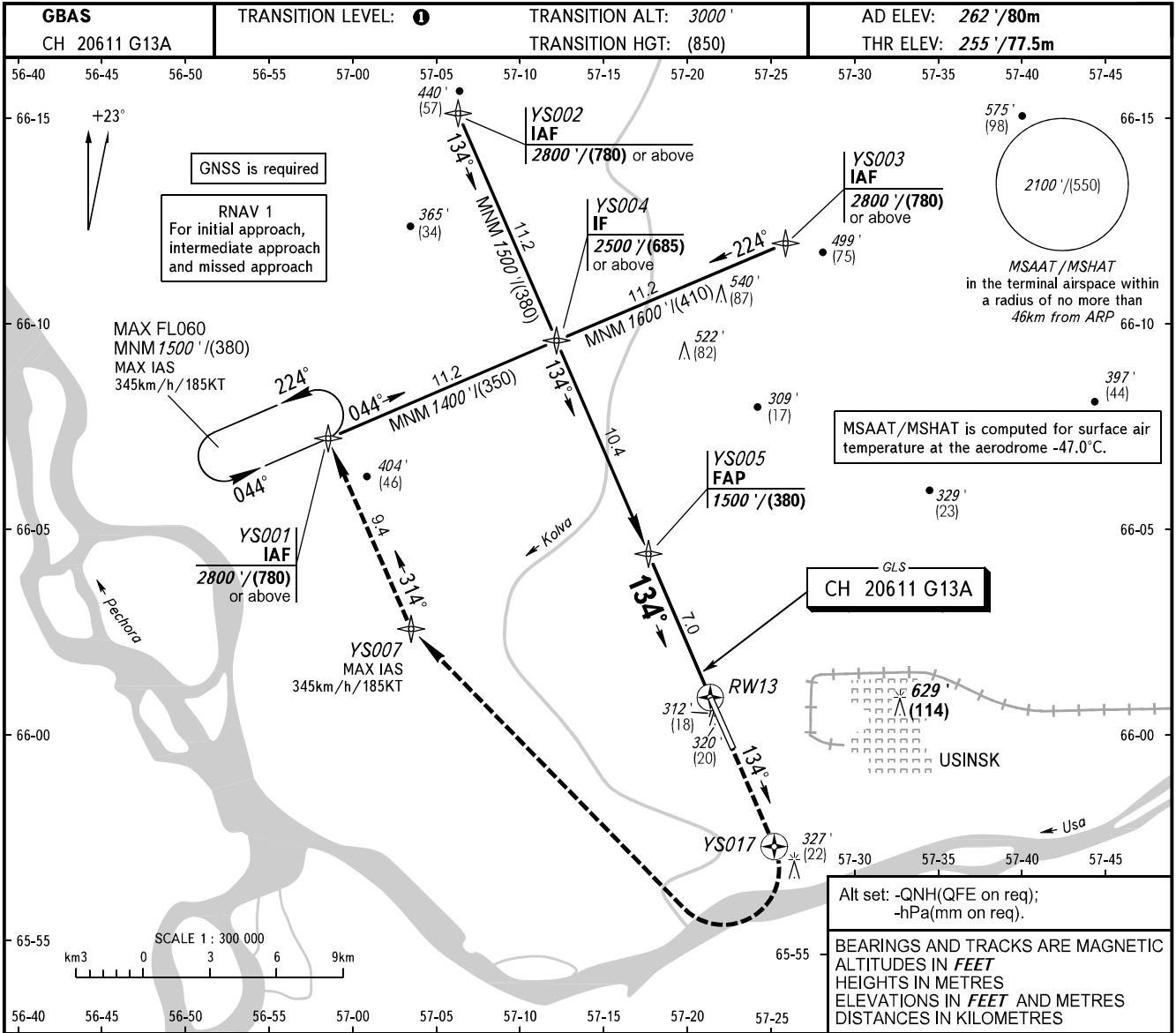


**INSTRUMENT
APPROACH
CHART - ICAO**

**USINSK, RUSSIA
USINSK
GLS RWY 13**

TOWER 118.200



OCA(H)		A	B	C	D
Straight-in Approach	456' (200') (60)	456' (200') (60)	463' (208') (64)	473' (218') (67)	
Circling	660' (400') (125)	760' (500') (155)	860' (600') (185)	960' (690') (215)	

TRANSITION LEVEL:

- FL040 when QNH is 1013 hPa (760mm mercury column) or above;
- FL050 when QNH is 977 hPa (733mm mercury column) or above, but less than 1013 hPa (760mm mercury column);
- FL060 when QNH is less than 977 hPa (733mm mercury column).

Visual manoeuvring E of AD is PROHIBITED.

GROUND SPEED	km/h	150	180	210	240	270	300	330	360
	kt	81	97	113	130	146	162	178	194
RATE OF DESCENT	m/s	2.2	2.6	3.0	3.5	3.9	4.3	4.8	5.2
	ft/min	427	512	597	682	768	853	945	1024

CHANGE: YS004