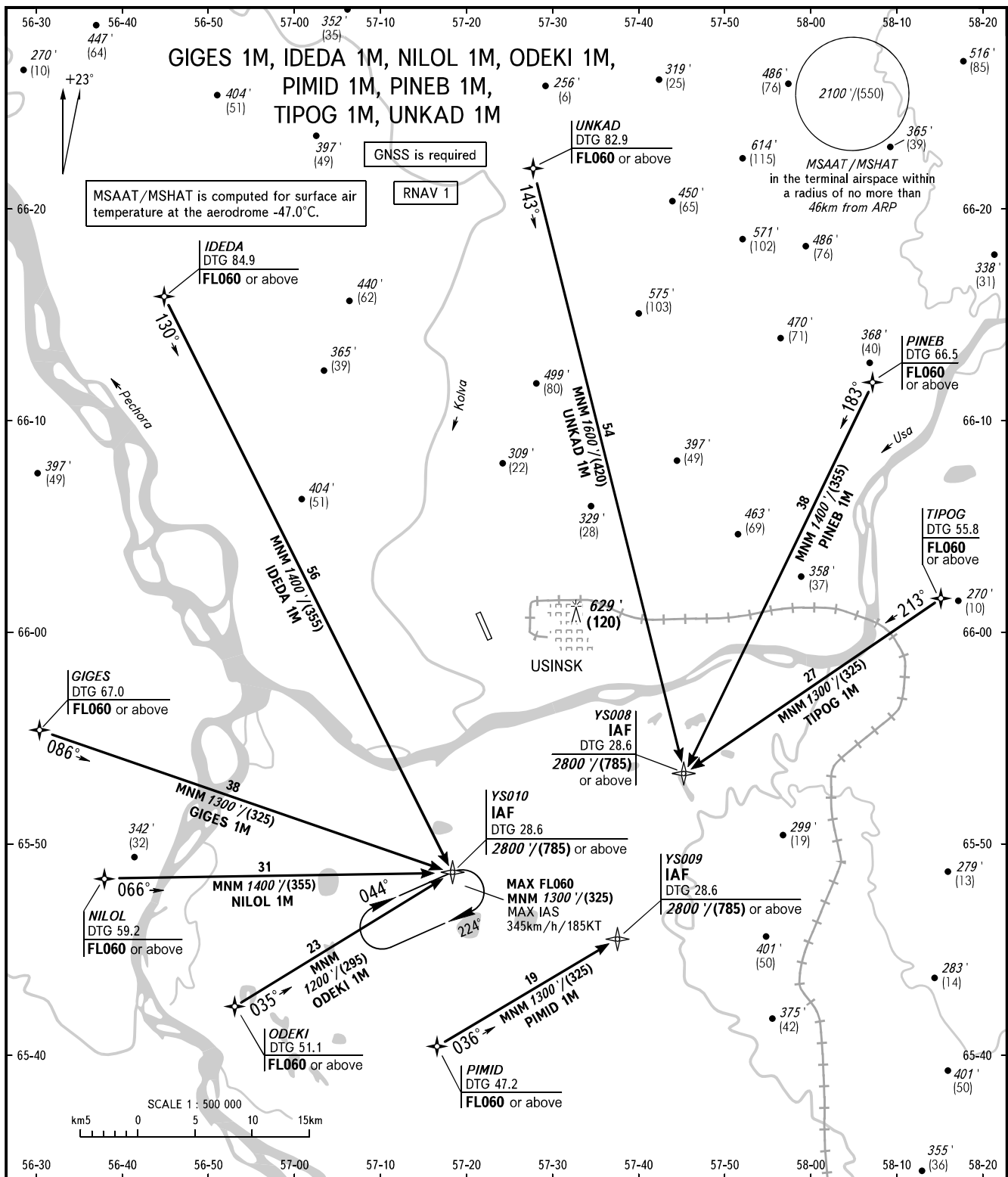


STANDARD ARRIVAL CHART
INSTRUMENT (STAR) - ICAO

USINSK, RUSSIA
USINSK
RNAV RWY 31

TRANSITION
LEVEL : **1**



TOWER **118.200**

1 TRANSITION LEVEL:

- FL040 when QNH is 1013 hPa (760mm mercury column) or above;
- FL050 when QNH is 977 hPa (733mm mercury column) or above, but less than 1013 hPa (760mm mercury column);
- FL060 when QNH is less than 977 hPa (733mm mercury column).

NOTE:

1. CDO depend on air traffic conditions.
2. CDO are applied if there is no conflicting traffic.
3. CDO can be cancelled by ATS unit in case of necessity to provide separation.
4. DTG-distance to RWY 31 THR.

BEARINGS AND TRACKS ARE MAGNETIC
ALTITUDES IN **FEET**
HEIGHTS IN METRES
ELEVATIONS IN **FEET** AND METRES
DISTANCES IN KILOMETRES

Alt set: -QNH(QFE on req);
-hPa(mm on req).