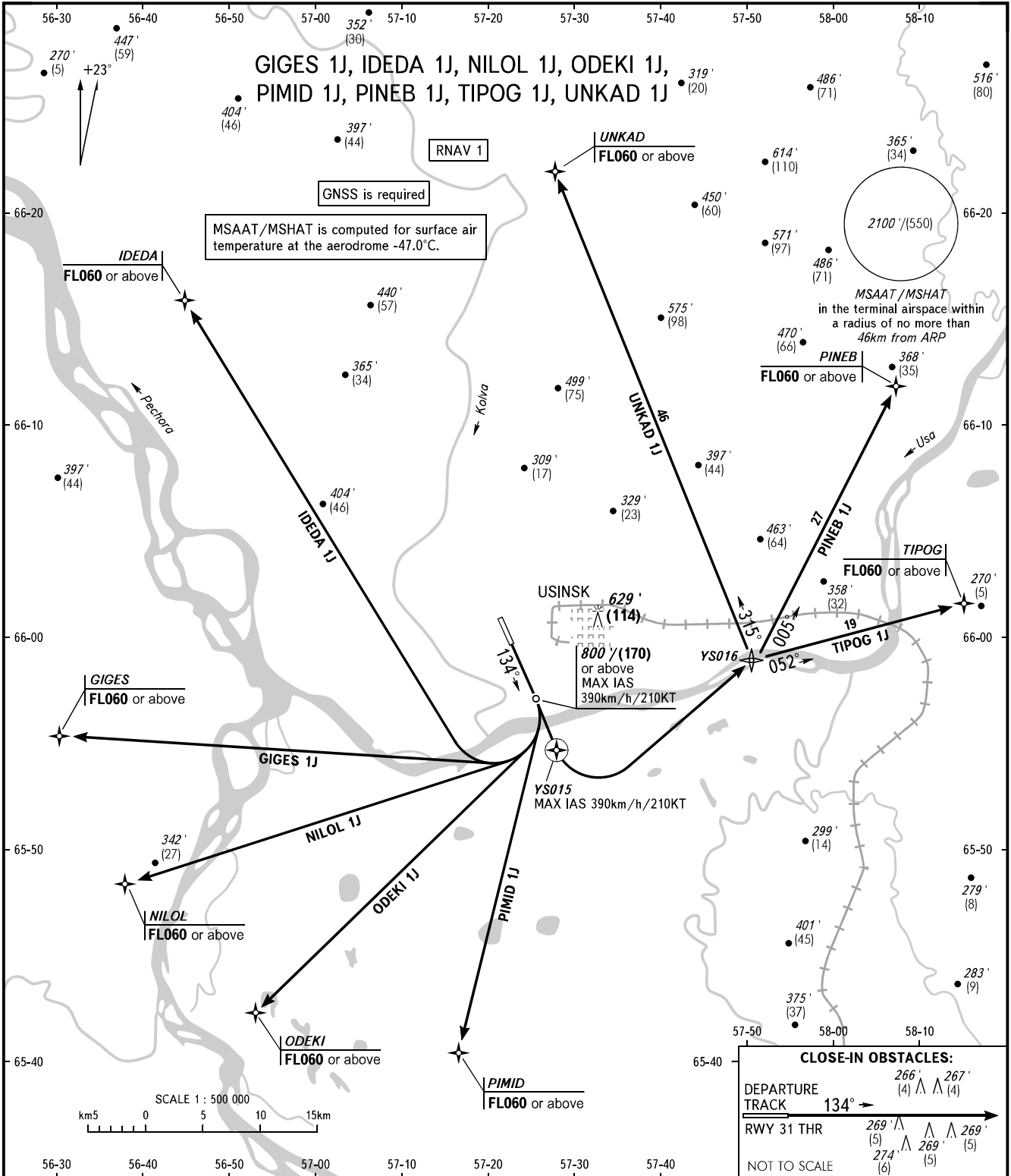


STANDARD DEPARTURE CHART
INSTRUMENT (SID) - ICAO

TRANSITION ALT: 3000'
TRANSITION HGT: (850)

USINSK, RUSSIA
USINSK
RNAV RWY 13



TOWER 118.200

NOTE:

- CCO are applicable in case of low air traffic intensity.
- Rate of climb may be assigned to flight crews to provide CCO in case of high air traffic intensity.

BEARINGS AND TRACKS ARE MAGNETIC
ALTITUDES IN FEET
HEIGHTS IN METRES
ELEVATIONS IN FEET AND METRES
DISTANCES IN KILOMETRES

Alt set: -QNH(QFE on req);
-hPa(mm on req).

WARNING:

- MNM climb gradients required due to the airspace structure:
 - 3.4% up to FL060 for GIGES 1J;
 - 3.8% up to FL060 for NILOL 1J;
 - 4.3% up to FL060 for ODEKI 1J;
 - 4.9% up to FL060 for PIMID 1J;
 - 3.5% up to FL060 for TIPOG 1J.
- Turn before passing DER is PROHIBITED.

CHANGE: New chart