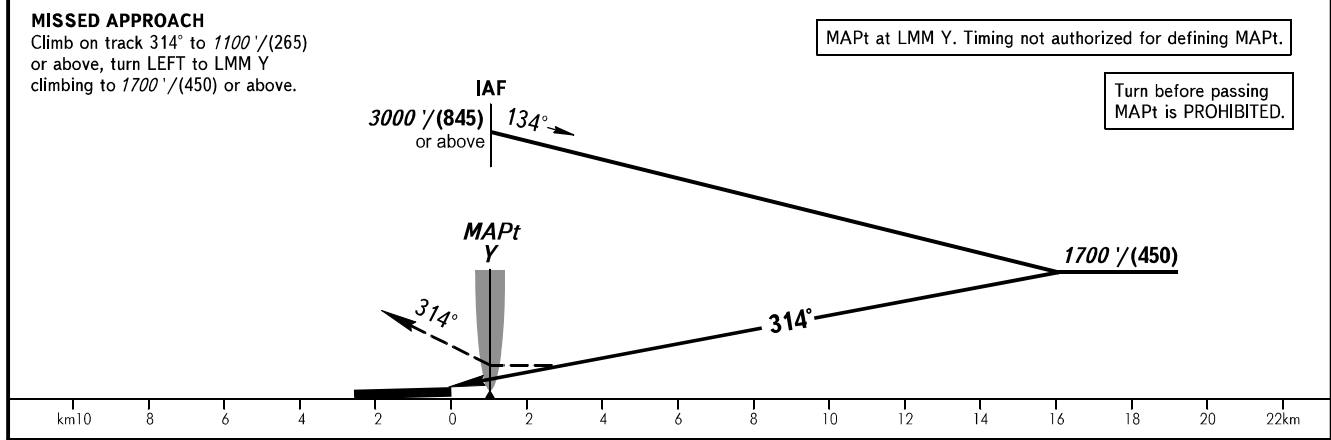
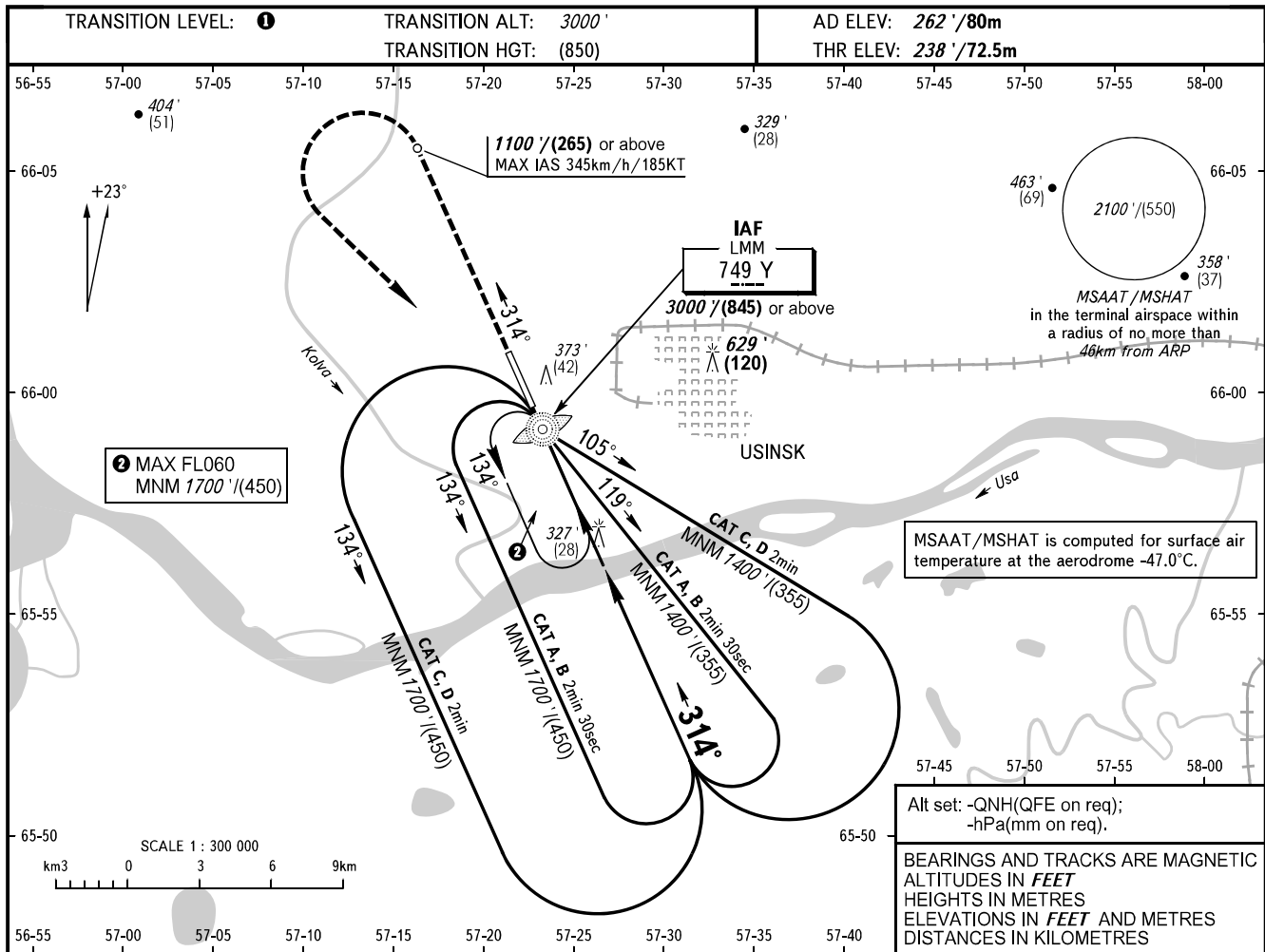


**INSTRUMENT  
APPROACH  
CHART - ICAO**

**USINSK, RUSSIA**  
USINSK  
NDB X RWY 31

TOWER **118.200**



OCA(H)	A	B	C	D
Straight-in Approach	630' (400') (120)	630' (400') (120)	630' (400') (120)	630' (400') (120)
Circling	660' (400') (125)	760' (500') (155)	860' (600') (185)	960' (690') (215)

**1** TRANSITION LEVEL:  
 - FL040 when QNH is 1013 hPa (760mm mercury column) or above;  
 - FL050 when QNH is 977 hPa (733mm mercury column) or above, but less than 1013 hPa (760mm mercury column);  
 - FL060 when QNH is less than 977 hPa (733mm mercury column).  
 Visual manoeuvring E of AD is PROHIBITED.

