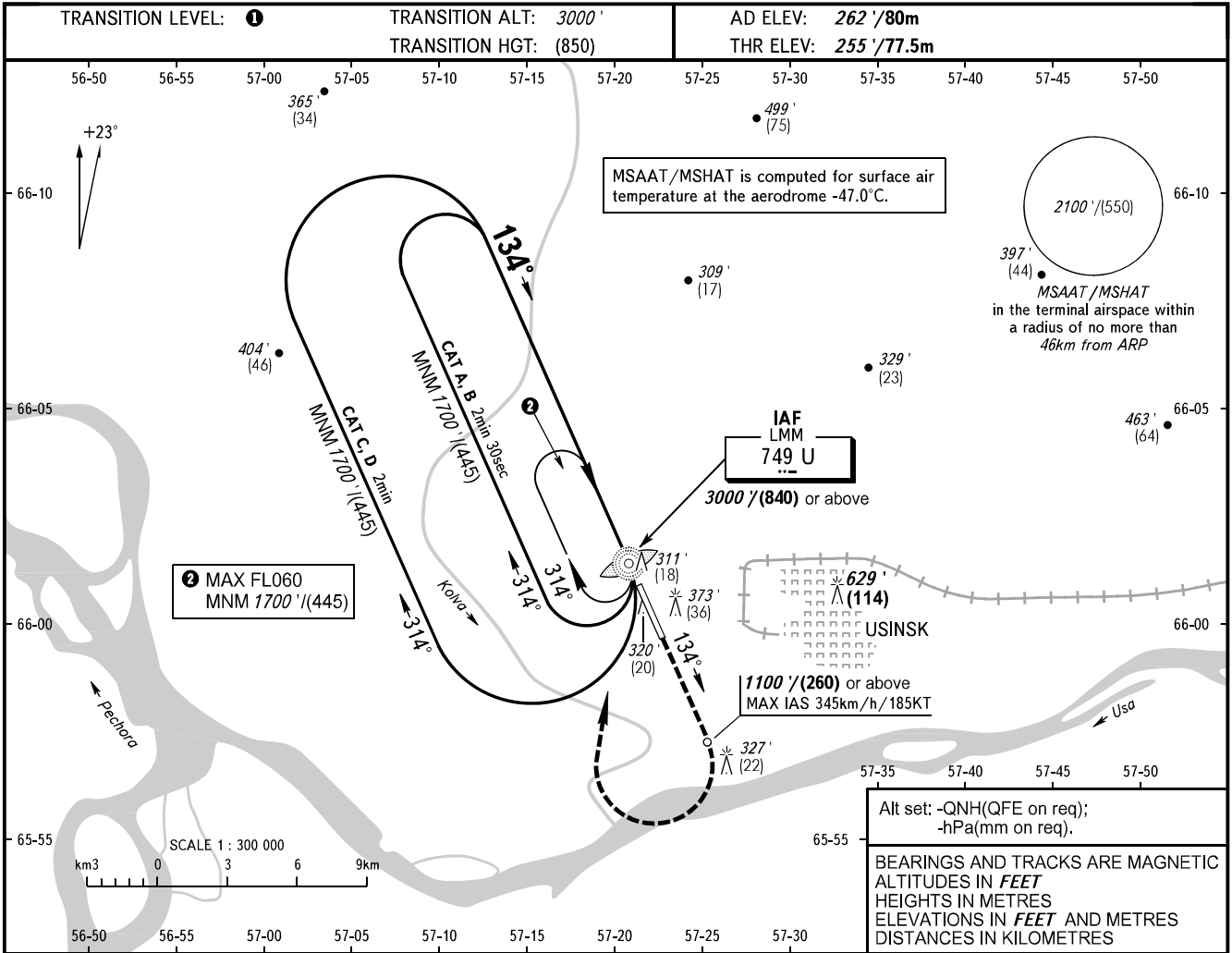


**INSTRUMENT  
APPROACH  
CHART - ICAO**

TOWER **118.200**

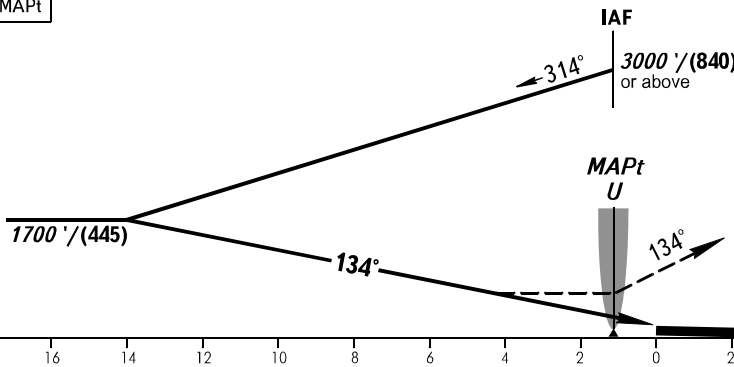
**USINSK, RUSSIA**  
USINSK  
NDB X RWY 13



MAPt at LMM U. Timing not authorized for defining MAPt

**MISSED APPROACH**  
Climb on track 134° to 1100' / (260) or above, turn RIGHT to LMM U climbing to 1700' / (445) or above.

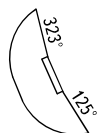
Turn before passing MAPt is PROHIBITED.



OCA(H)		A	B	C	D
Straight-in Approach		740' (480') (150)	740' (480') (150)	740' (480') (150)	740' (480') (150)
Circling		740' (480') (150)	760' (500') (155)	860' (600') (185)	960' (690') (215)

- ① TRANSITION LEVEL:
- FL040 when QNH is 1013 hPa (760mm mercury column) or above;
  - FL050 when QNH is 977 hPa (733mm mercury column) or above, but less than 1013 hPa (760mm mercury column);
  - FL060 when QNH is less than 977 hPa (733mm mercury column).

Visual manoeuvring E of AD is PROHIBITED.



CHANGE: New chart