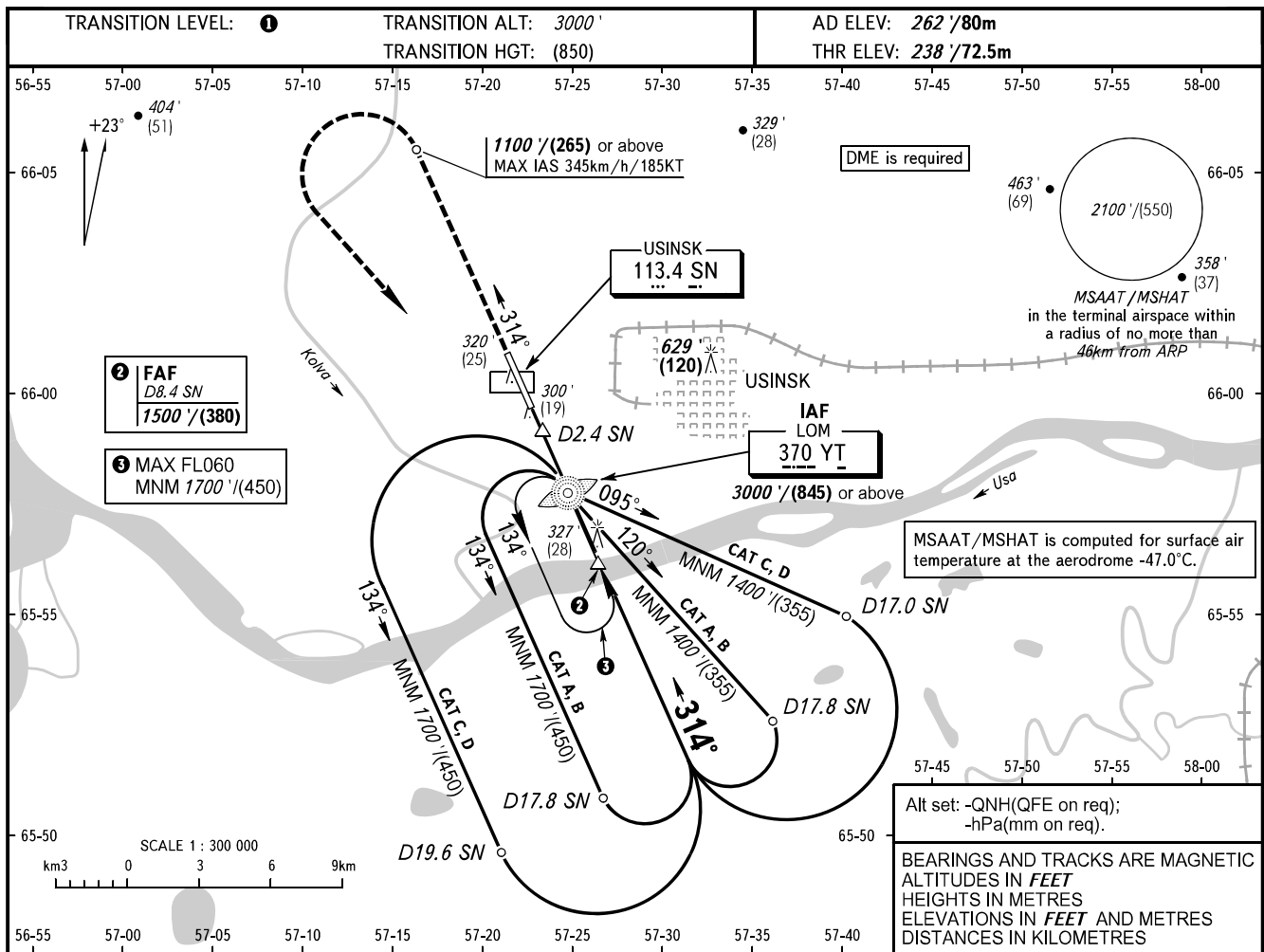


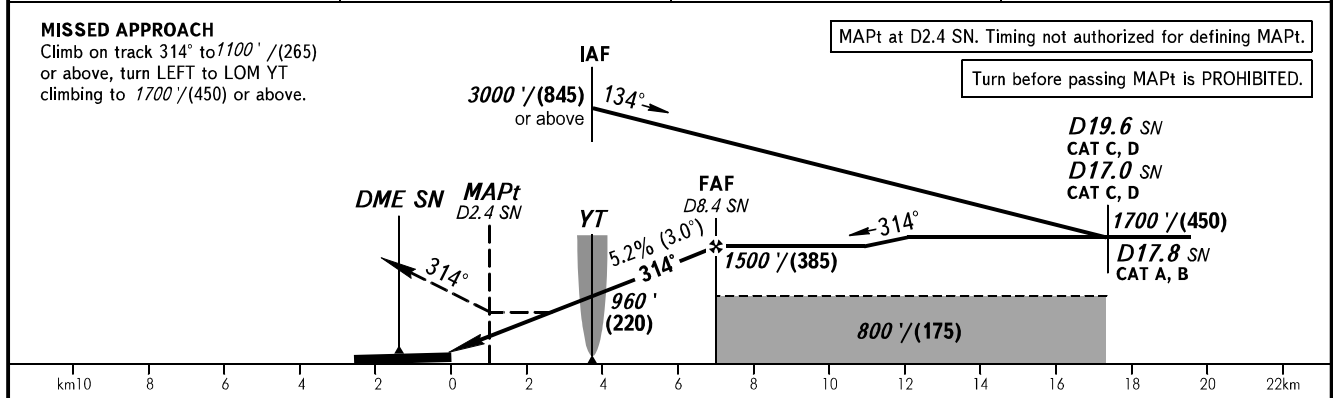
INSTRUMENT
APPROACH
CHART - ICAO

USINSK, RUSSIA
USINSK
NDB Y RWY 31

TOWER 118.200



DME SN	4.0	6.0	8.0
ALTITUDE/HEIGHT	750' (160)	1100' (260)	1440' (365)



OCA(H)	A	B	C	D
Straight-in Approach	580' (340') (105)	580' (340') (105)	580' (340') (105)	580' (340') (105)
Circling	660' (400') (125)	760' (500') (155)	860' (600') (185)	960' (690') (215)

① TRANSITION LEVEL:
 - FL040 when QNH is 1013 hPa (760mm mercury column) or above;
 - FL050 when QNH is 977 hPa (733mm mercury column) or above, but less than 1013 hPa (760mm mercury column);
 - FL060 when QNH is less than 977 hPa (733mm mercury column).

Visual manoeuvring E of AD is PROHIBITED.

GROUND SPEED	km/h	150	180	210	240	270	300	330	360
	kt	81	97	113	130	146	162	178	194
RATE OF DESCENT	m/s	2.2	2.6	3.0	3.5	3.9	4.3	4.8	5.2
	ft/min	427	512	597	682	768	853	945	1024