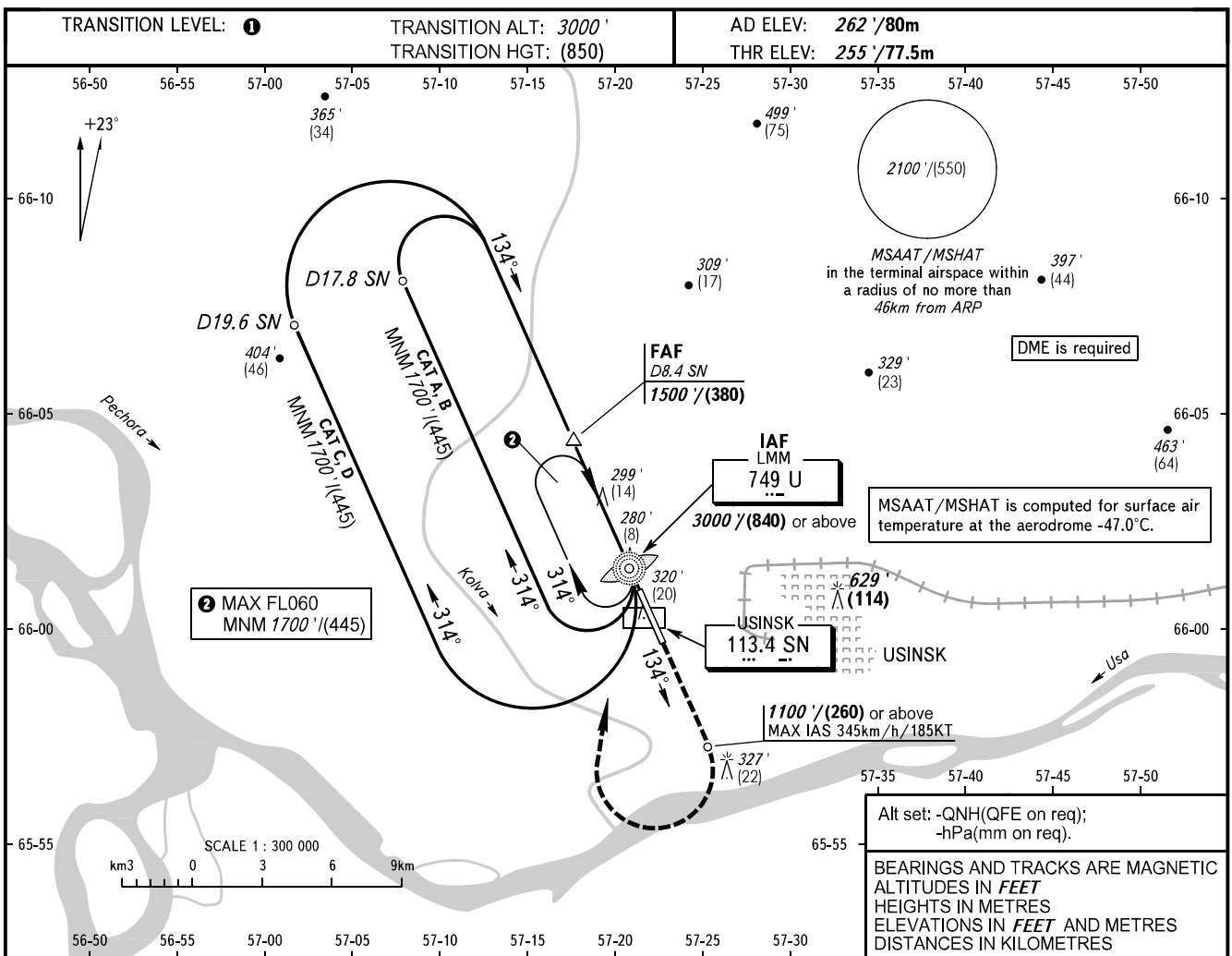


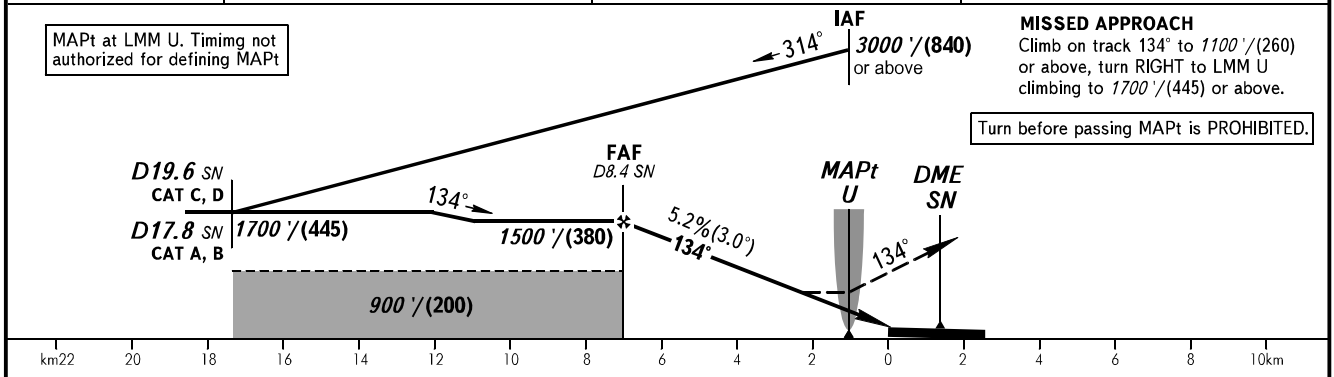
**INSTRUMENT  
APPROACH  
CHART - ICAO**

TOWER **118.200**

**USINSK, RUSSIA**  
USINSK  
NDB Z RWY 13



DME SN	8.0	6.0	4.0
ALTITUDE/HEIGHT	1450'/(365)	1110'/(260)	770'/(155)



OCA(H)		A	B	C	D
Straight-in Approach		550' (300') (90)	550' (300') (90)	550' (300') (90)	550' (300') (90)
Circling		660' (400') (125)	760' (500') (155)	860' (600') (185)	960' (690') (215)

① TRANSITION LEVEL:  
 - FL040 when QNH is 1013 hPa (760mm mercury column) or above;  
 - FL050 when QNH is 977 hPa (733mm mercury column) or above, but less than 1013 hPa (760mm mercury column);  
 - FL060 when QNH is less than 977 hPa (733mm mercury column).

Visual manoeuvring E of AD is PROHIBITED.

GROUND SPEED	km/h	150	180	210	240	270	300	330	360
	kt	81	97	113	130	146	162	178	194
RATE OF DESCENT	m/s	2.2	2.6	3.0	3.5	3.9	4.3	4.8	5.2
	ft/min	427	512	597	682	768	853	945	1024

CHANGE: New chart