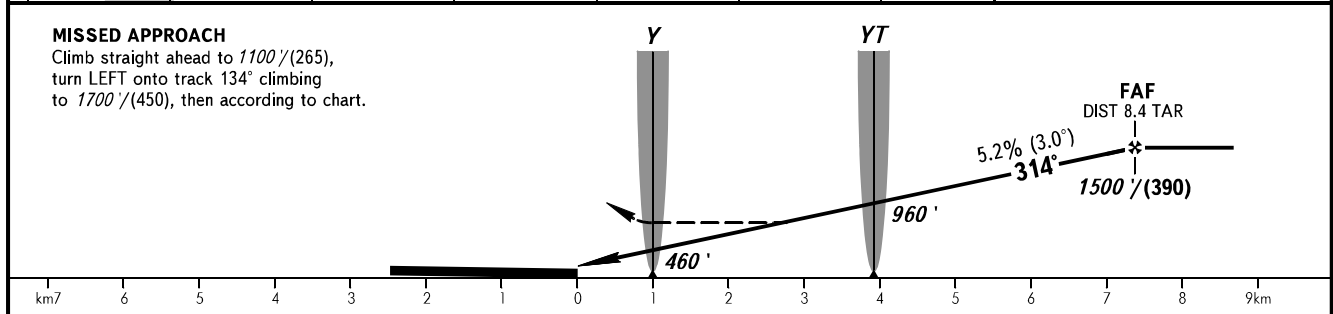
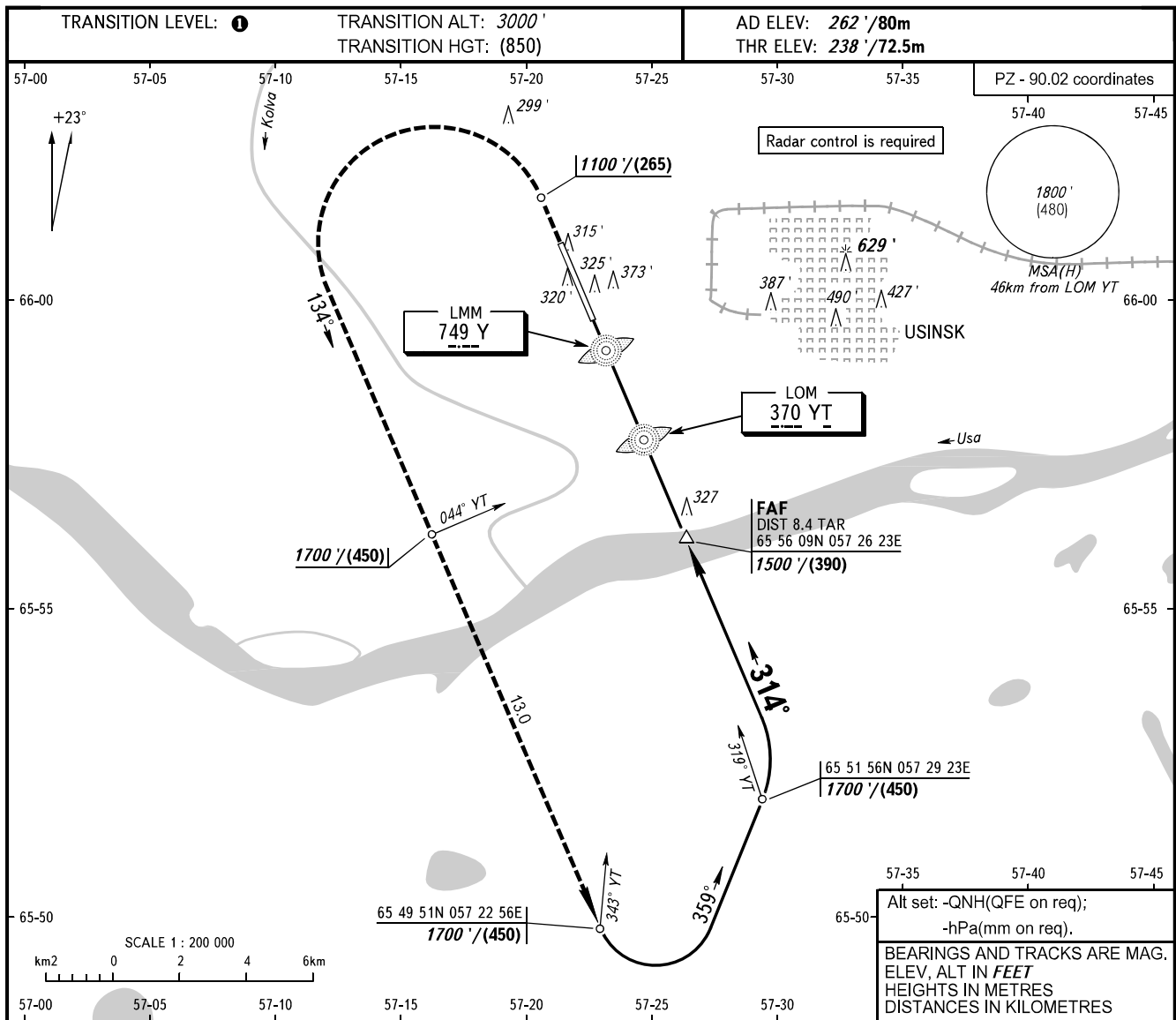


INSTRUMENT
APPROACH
CHART - ICAO

TOWER 118.200

USINSK, RUSSIA
USINSK
2 NDB RWY 31



OCA(H)		A	B	C	D
Straight-in Approach		580' (340')	580' (340')	580' (340')	580' (340')
Circling		660' (400')	760' (500')	860' (600')	960' (700')

TRANSITION LEVEL:
- FL040 when QNH is 1013 hPa (760mm mercury column) or above;
- FL050 when QNH is 977 hPa (733mm mercury column) or above,
but less than 1013 hPa (760mm mercury column);
- FL060 when QNH is less than 977 hPa (733mm mercury column).

Visual manoeuvring E of AD is PROHIBITED.

GROUND SPEED	km/h	150	180	210	240	270	300	330	360
	kt	81	97	113	130	146	162	178	194
RATE OF DESCENT	m/s	2.2	2.6	3.0	3.5	3.9	4.3	4.8	5.2
	ft/min	427	512	597	682	768	853	945	1024

CHANGE: New chart