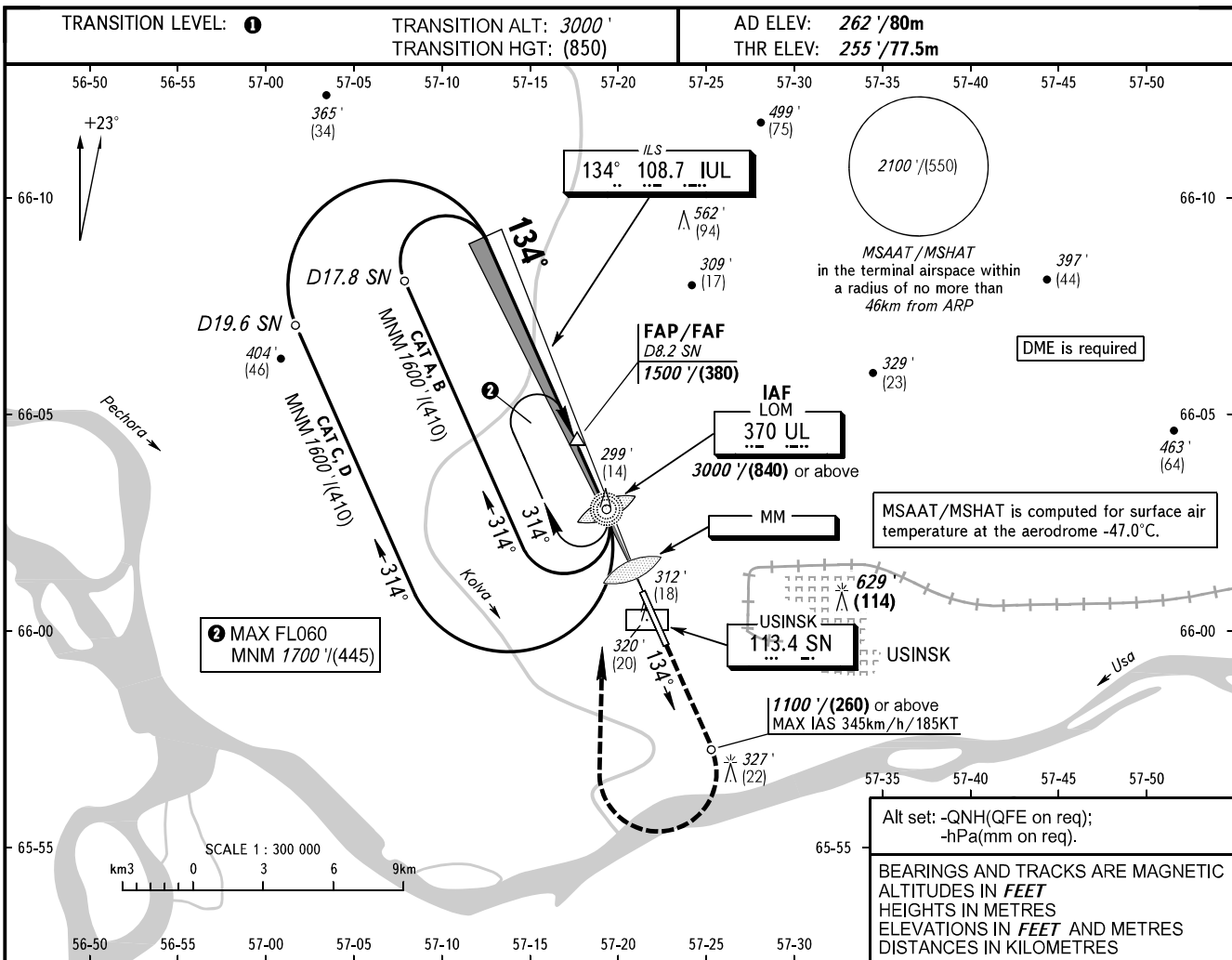


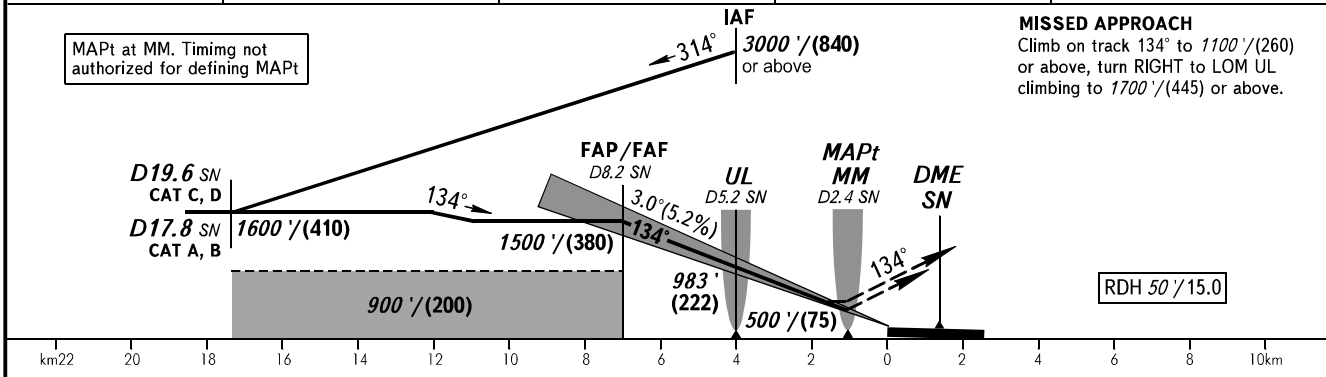
**INSTRUMENT
APPROACH
CHART - ICAO**

TOWER **118.200**

USINSK, RUSSIA
USINSK
ILS Y, LOC Y RWY 13



DME SN	8.0	6.0	4.0	2.0
ALTITUDE/HEIGHT	1450' / (365)	1110' / (260)	770' / (155)	430' / (55)



OCA(H)		A	B	C	D
Straight-in Approach		456' (200') (60)	456' (200') (60)	463' (208') (64)	473' (218') (67)
	LOC	550' (290') (90)	550' (290') (90)	550' (290') (90)	550' (290') (90)
Circling		660' (400') (125)	760' (500') (155)	860' (600') (185)	960' (690') (215)

① **TRANSITION LEVEL:**
- FL040 when QNH is 1013 hPa (760mm mercury column) or above;
- FL050 when QNH is 977 hPa (733mm mercury column) or above, but less than 1013 hPa (760mm mercury column);
- FL060 when QNH is less than 977 hPa (733mm mercury column).

Visual manoeuvring E of AD is PROHIBITED.

GROUND SPEED	km/h									
		150	180	210	240	270	300	330	360	
RATE OF DESCENT	kt									
		81	97	113	130	146	162	178	194	
	m/s									
		2.2	2.6	3.0	3.5	3.9	4.3	4.8	5.2	
	ft/min									
		427	512	597	682	768	853	945	1024	