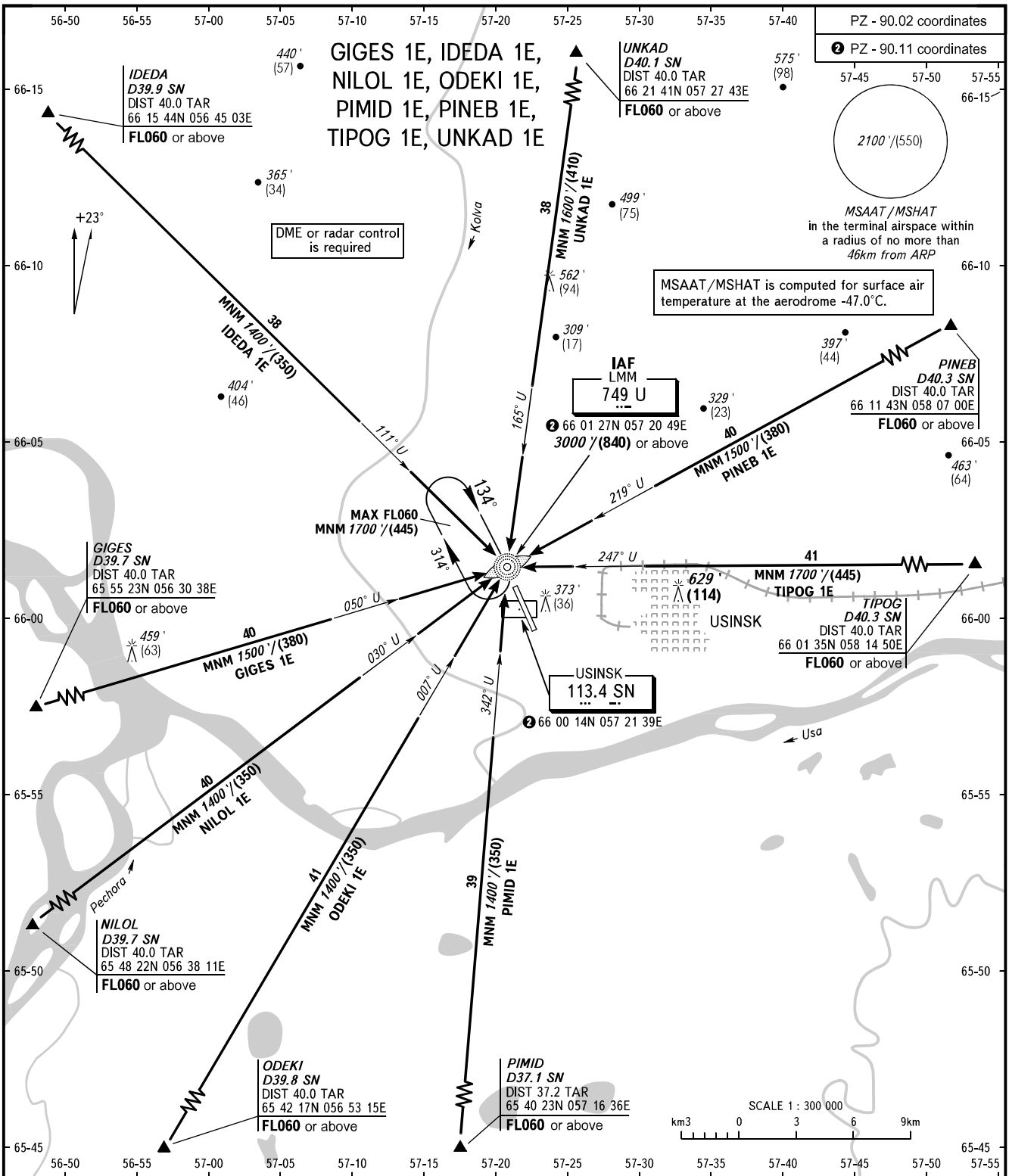


STANDARD ARRIVAL CHART
INSTRUMENT (STAR) - ICAO

USINSK, RUSSIA
USINSK
RWY 13

TRANSITION
LEVEL: **1**



CHANGE: New chart

BEARINGS AND TRACKS ARE MAGNETIC
ALTITUDES IN FEET
HEIGHTS IN METRES
ELEVATIONS IN FEET AND METRES
DISTANCES IN KILOMETRES

Alt set: -QNH(QFE on req);
-hPa(mm on req).

1 TRANSITION LEVEL:

- FL040 when QNH is 1013 hPa (760mm mercury column) or above;
- FL050 when QNH is 977 hPa (733mm mercury column) or above, but less than 1013 hPa (760mm mercury column);
- FL060 when QNH is less than 977 hPa (733mm mercury column).

Federal Air Transport Agency AIRAC AMDT 02/24