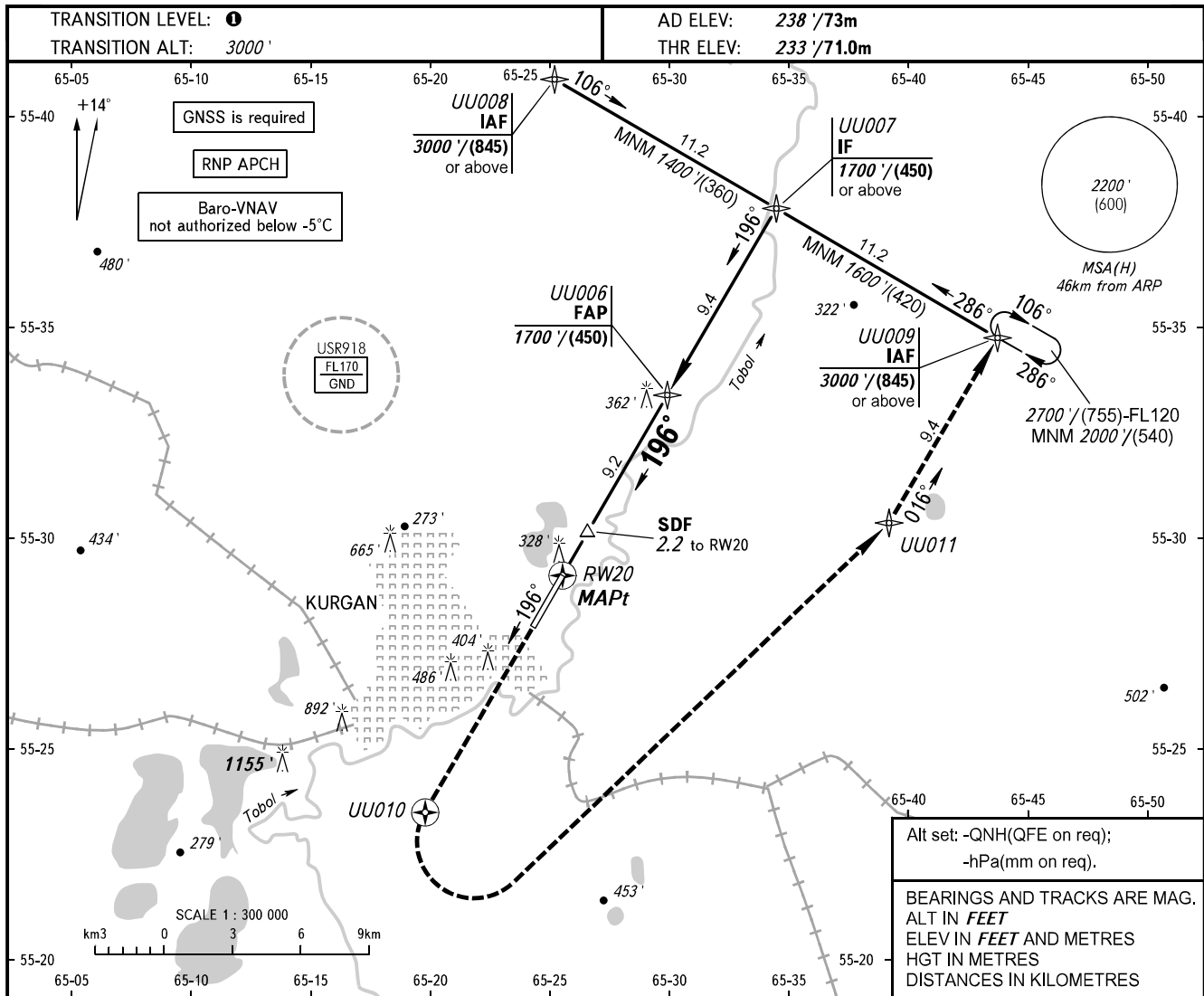


**INSTRUMENT
APPROACH
CHART - ICAO**

VYSHKA 120.300

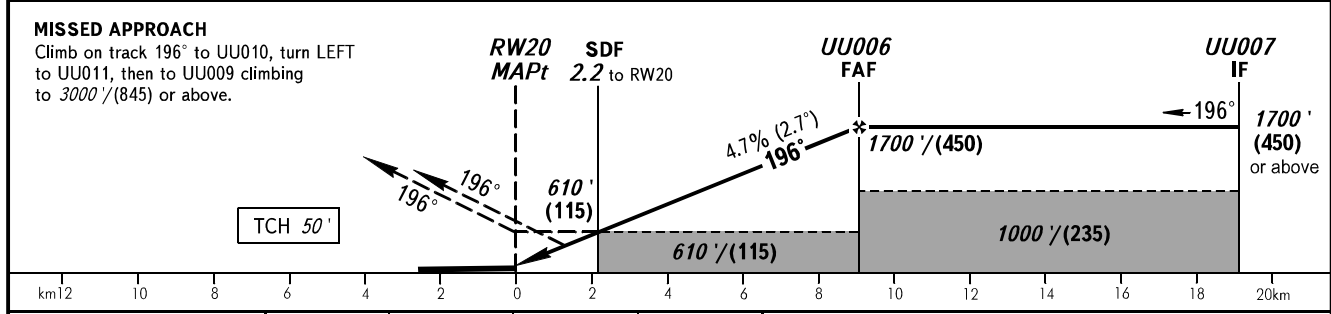
KURGAN, RUSSIA
KURGAN
RNP RWY 20



Alt set: -QNH(QFE on req);
-hPa(mm on req).

BEARINGS AND TRACKS ARE MAG.
ALT IN FEET
ELEV IN FEET AND METRES
HGT IN METRES
DISTANCES IN KILOMETRES

DIST to RW20	4.0	6.0	8.0	9.2
ALTITUDE/HEIGHT	900' (205)	1210' (300)	1520' (395)	1700' (450)



OCA(H)		A	B	C	D	TRANSITION LEVEL: - FL040 when QNH is 1013 hPa (760mm mercury column) or above; - FL050 when QNH is 977 hPa (733mm mercury column) or above, but less than 1013 hPa (760mm mercury column); - FL060 when QNH is less than 977 hPa (733mm mercury column). NOTE MAPt at RW20. Timing not authorized for defining MAPt.				
Straight-in Approach	LNAV	590' (350') (110)	590' (350') (110)	590' (350') (110)	590' (350') (110)					
	VNAV	460' (230') (70)	470' (240') (75)	480' (250') (75)	490' (260') (80)					
GROUND SPEED	km/h	150	180	210	240	270	300	330	360	390
RATE OF DESCENT	m/s	2.0	2.4	2.7	3.1	3.5	3.9	4.3	4.7	5.1
	ft/min	385	463	540	617	694	771	848	925	1002