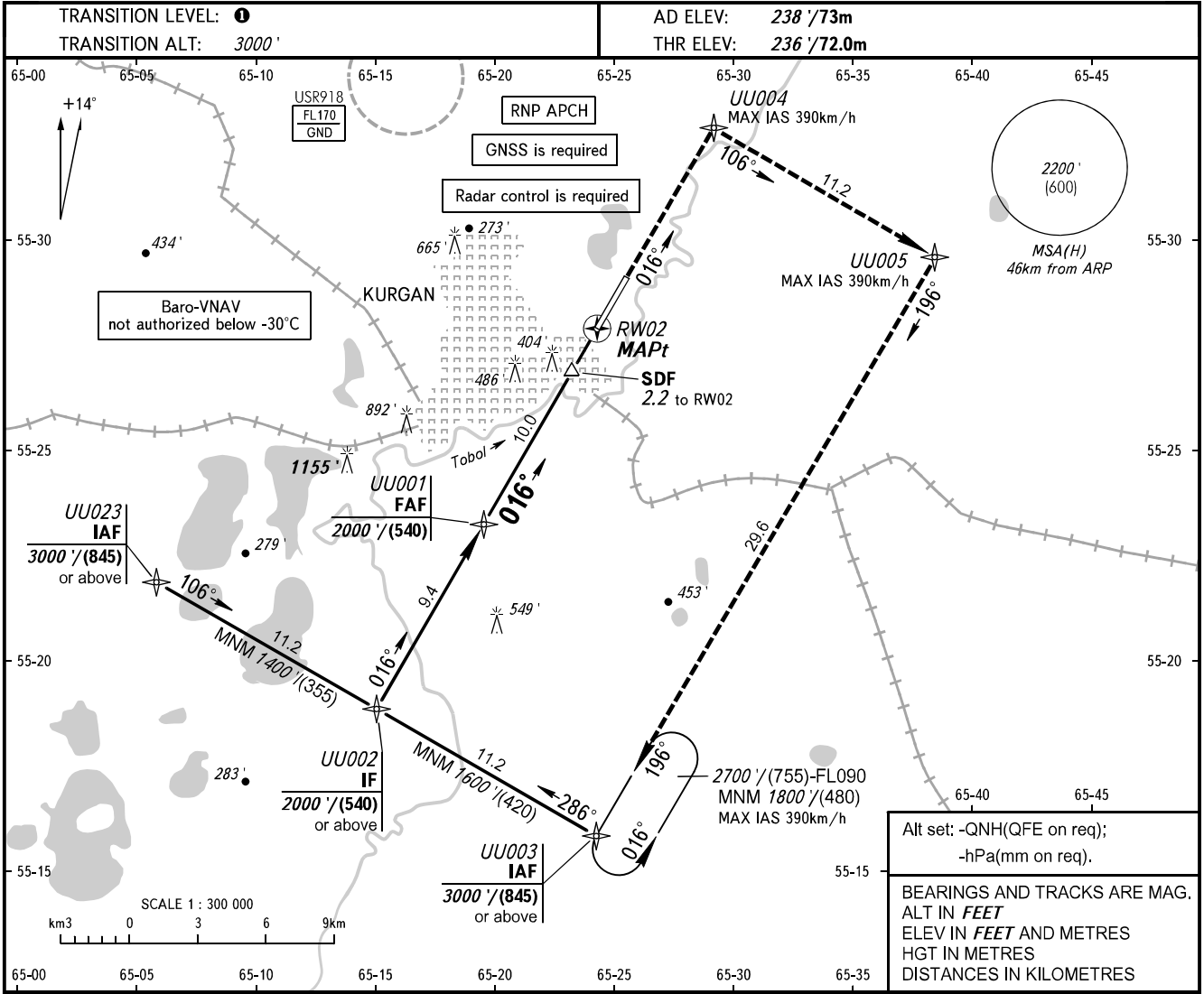


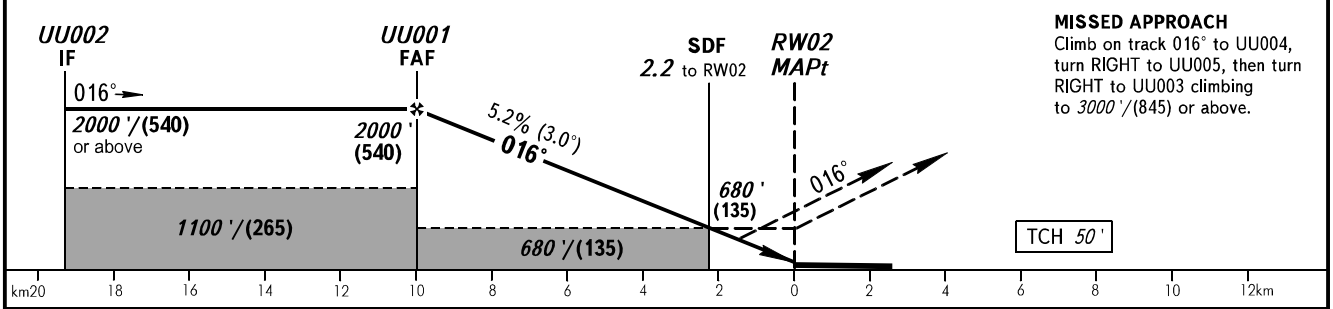
**INSTRUMENT
APPROACH
CHART - ICAO**

VYSHKA **120.300**

KURGAN, RUSSIA
KURGAN
RNP RWY 02



DIST to RWY02	10.0	8.0	6.0	4.0
ALTITUDE/HEIGHT	2000'/(540)	1670'/(440)	1320'/(330)	980'/(230)



OCA(H)		A	B	C	D	1 TRANSITION LEVEL: - FL040 when QNH is 1013 hPa (760mm mercury column) or above; - FL050 when QNH is 977 hPa (733mm mercury column) or above, but less than 1013 hPa (760mm mercury column); - FL060 when QNH is less than 977 hPa (733mm mercury column). NOTE MAPt at RWY02. Timing not authorized for defining MAPt.
Straight-in Approach	LNAV	650' (420') (130)	650' (420') (130)	650' (420') (130)	650' (420') (130)	
	LNAV VNAV	540' (300') (95)	550' (310') (100)	560' (320') (100)	570' (330') (105)	

GROUND SPEED	km/h	150	180	210	240	270	300	330	360	390
RATE OF DESCENT	m/s	2.2	2.6	3.0	3.5	3.9	4.3	4.8	5.2	5.6
	ft/min	427	512	597	682	768	853	938	1024	1109

CHANGE: MISSED APPROACH