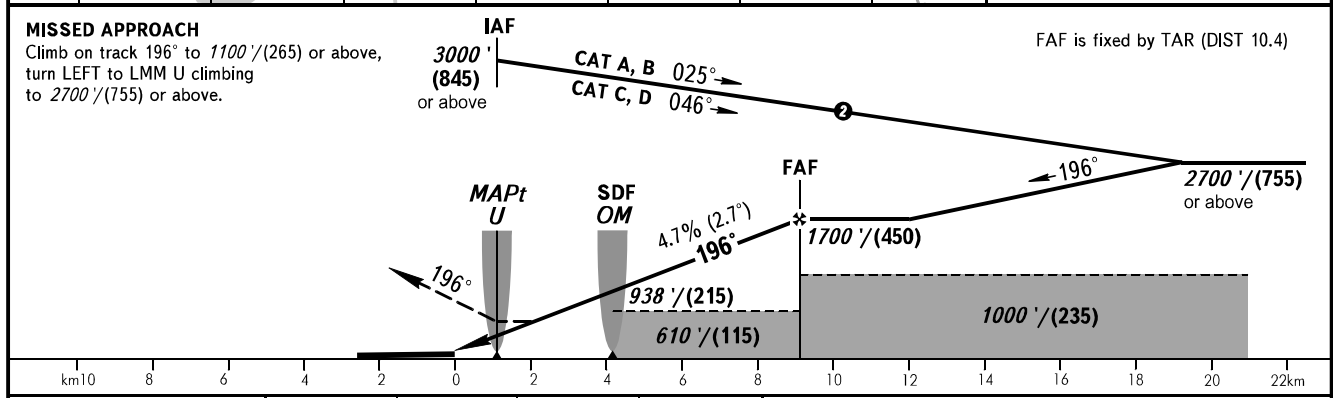
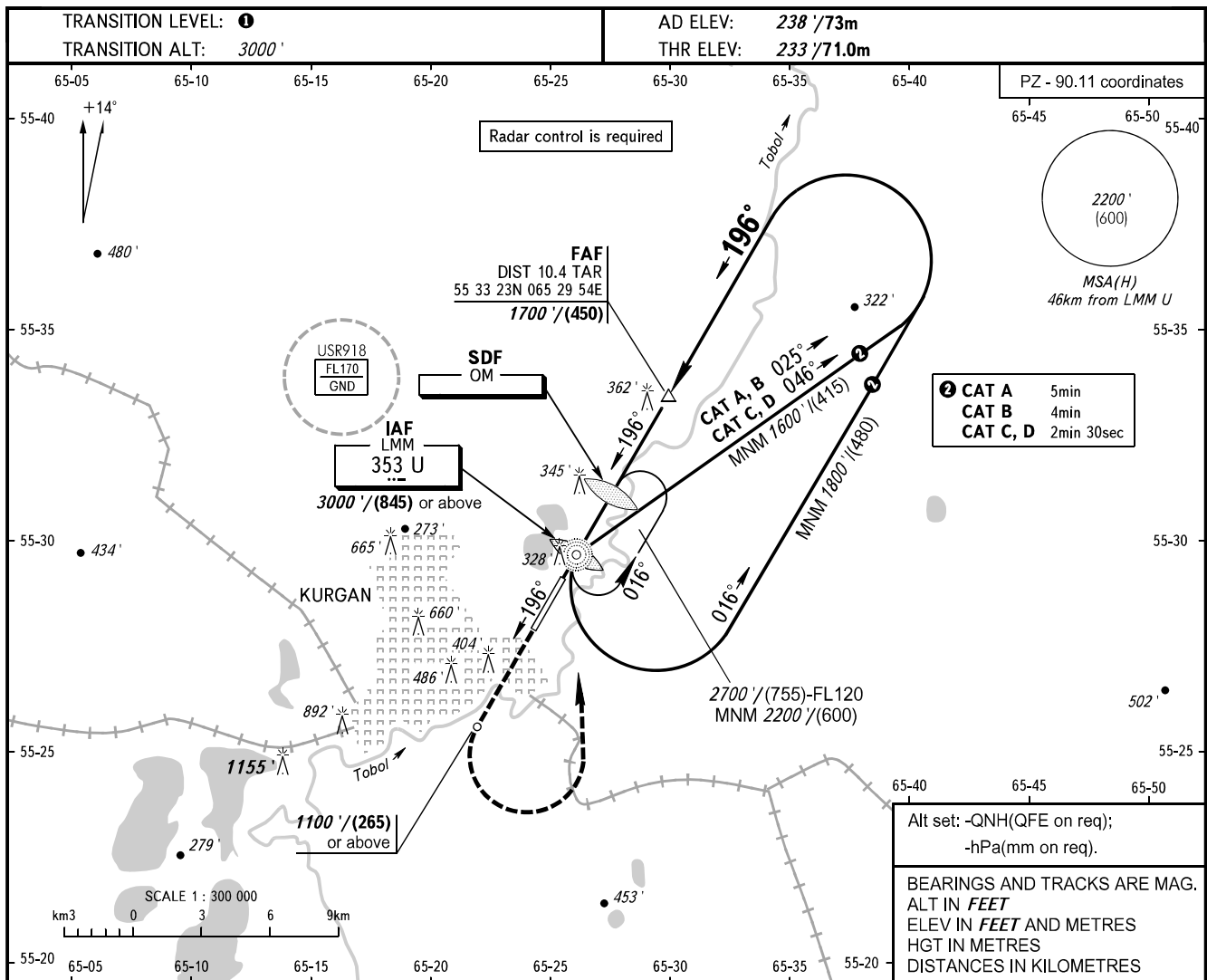


INSTRUMENT  
APPROACH  
CHART - ICAO

VYSHKA 120.300

KURGAN, RUSSIA  
KURGAN  
NDB Y RWY 20



OCA(H)		A	B	C	D	① TRANSITION LEVEL:							
Straight-in Approach	With SDF	600' (370') (115)	600' (370') (115)	600' (370') (115)	600' (370') (115)	- FL040 when QNH is 1013 hPa (760mm mercury column) or above;							
	WO SDF	610' (380') (115)	610' (380') (115)	610' (380') (115)	610' (380') (115)	- FL050 when QNH is 977 hPa (733mm mercury column) or above, but less than 1013 hPa (760mm mercury column);							
						- FL060 when QNH is less than 977 hPa (733mm mercury column).							
						<b>NOTE:</b>							
						1. MAPt at LMM U. Timing not authorized for defining MAPt.							
						2. Turn before passing MAPt is PROHIBITED.							
						3. Approach procedure is not AVBL, when USR918 is active.							
GROUND SPEED		km/h	150	180	210	240	270	300	330	360	390		
RATE OF DESCENT		m/s	2.0	2.4	2.7	3.1	3.5	3.9	4.3	4.7	5.1		
		ft/min	385	463	540	617	694	771	848	925	1002		