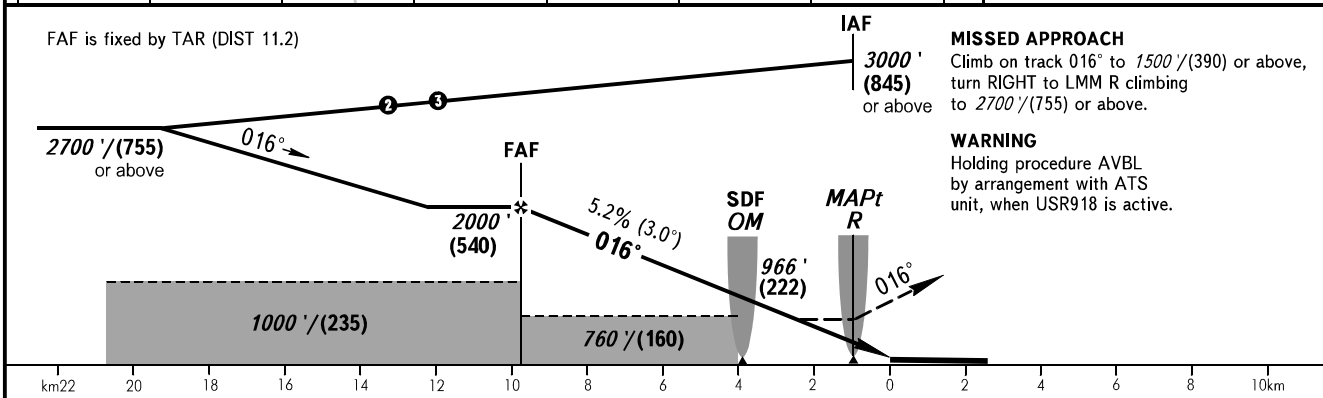
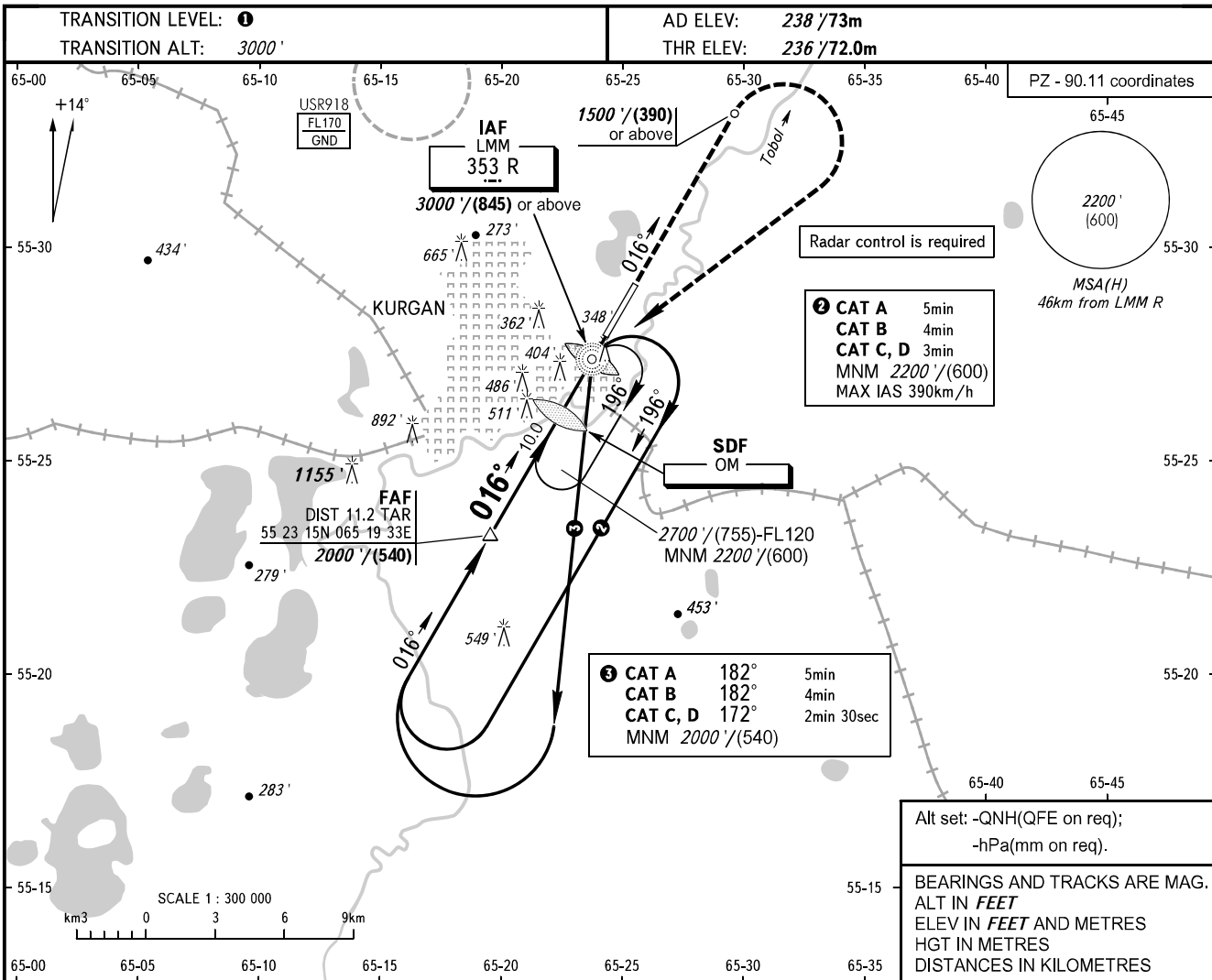


**INSTRUMENT
APPROACH
CHART - ICAO**

VYSHKA 120.300

**KURGAN, RUSSIA
KURGAN
NDB Y RWY 02**



OCA(H)		A	B	C	D
Straight-in Approach	With SDF	650' (420') (130)	650' (420') (130)	650' (420') (130)	650' (420') (130)
	WO SDF	760' (530') (160)	760' (530') (160)	760' (530') (160)	760' (530') (160)

1 TRANSITION LEVEL:
 - FL040 when QNH is 1013 hPa (760mm mercury column) or above;
 - FL050 when QNH is 977 hPa (733mm mercury column) or above, but less than 1013 hPa (760mm mercury column);
 - FL060 when QNH is less than 977 hPa (733mm mercury column).
NOTE:
 1. MAPt at LMM R. Timing not authorized for defining MAPt.
 2. Turn before passing MAPt is PROHIBITED.

GROUND SPEED	km/h	150	180	210	240	270	300	330	360	390
RATE OF DESCENT	m/s	2.2	2.6	3.0	3.5	3.9	4.3	4.8	5.2	5.6
	ft/min	427	512	597	682	768	853	938	1024	1109

CHANGE: MNM base turn