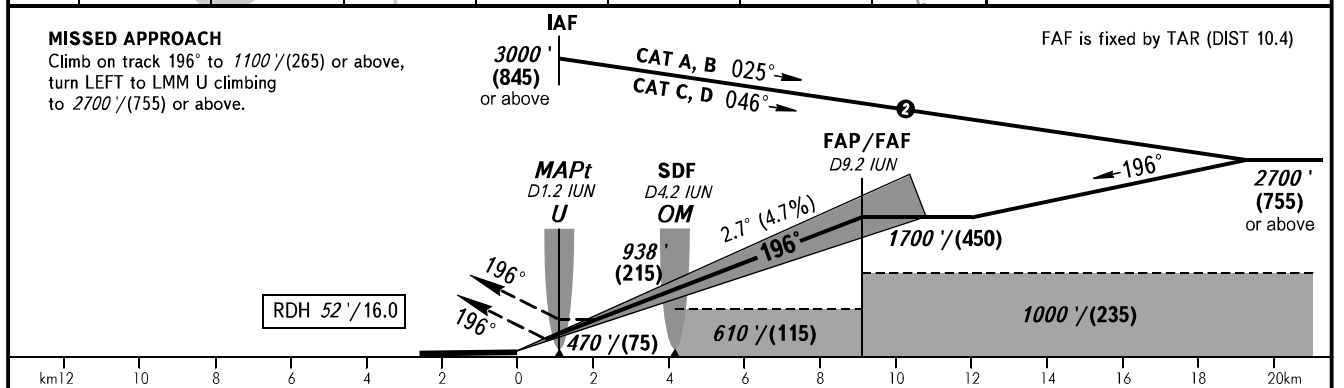
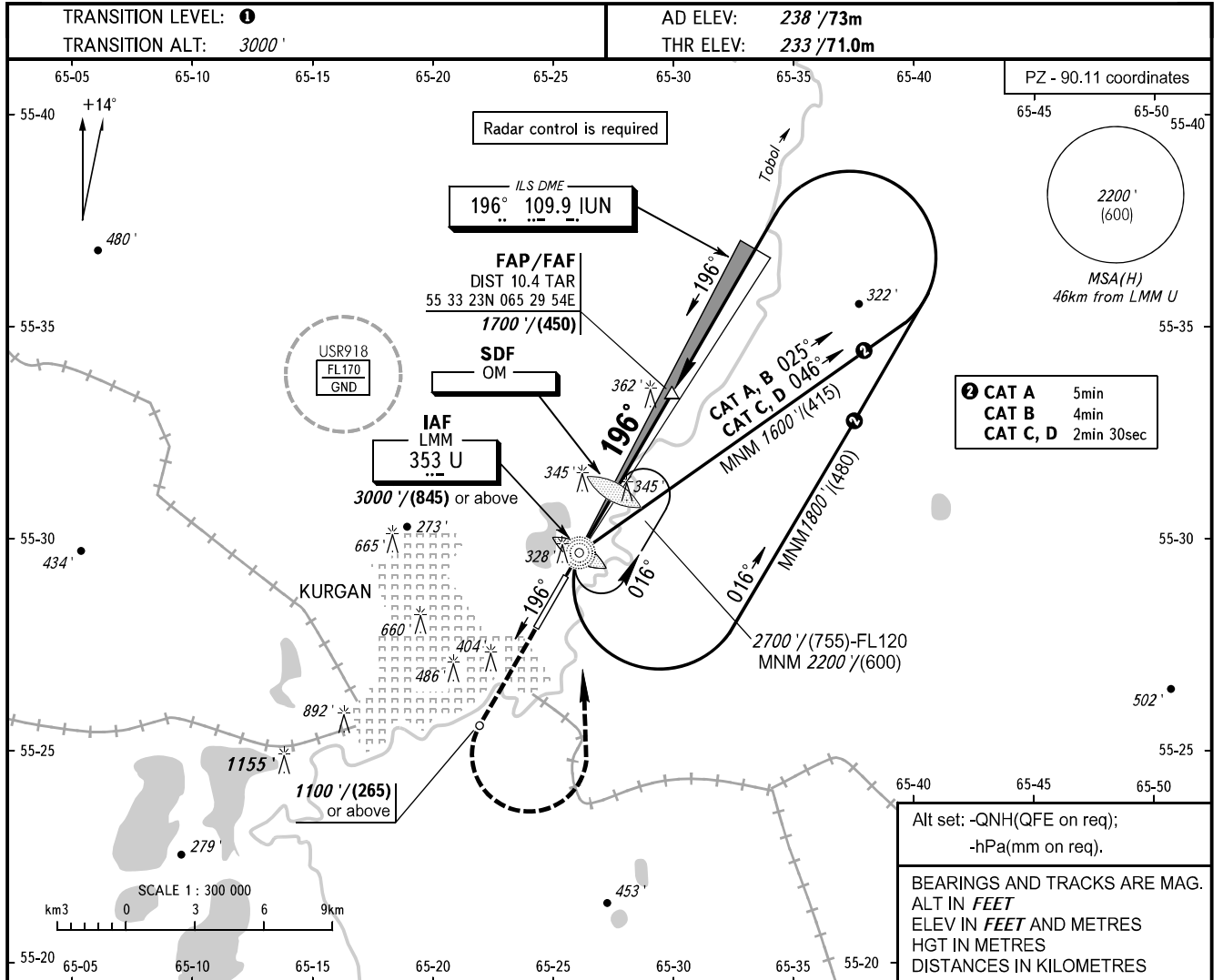


INSTRUMENT
APPROACH
CHART - ICAO

VYSHKA 120.300

KURGAN, RUSSIA
KURGAN
ILS X, LOC X RWY 20



OCA(H)		A	B	C	D						
Straight-in Approach	CAT I	429' (196') (60)	441' (208') (64)	449' (216') (66)	460' (227') (70)						
	LOC	With SDF	600' (370') (115)	600' (370') (115)	600' (370') (115)	600' (370') (115)					
		WO SDF	610' (380') (115)	610' (380') (115)	610' (380') (115)	610' (380') (115)					
GROUND SPEED		km/h	150	180	210	240	270	300	330	360	390
RATE OF DESCENT		m/s	2.0	2.4	2.7	3.1	3.5	3.9	4.3	4.7	5.1
		ft/min	385	463	540	617	694	771	848	925	1002

1 TRANSITION LEVEL:
- FL040 when QNH is 1013 hPa (760mm mercury column) or above;
- FL050 when QNH is 977 hPa (733mm mercury column) or above, but less than 1013 hPa (760mm mercury column);
- FL060 when QNH is less than 977 hPa (733mm mercury column).

NOTE:
1. MAPt at LMM U. Timing not authorized for defining MAPt (LOC).
2. Turn before passing MAPt (LOC) is PROHIBITED.
3. Approach procedure is not AVBL, when USR918 is active.