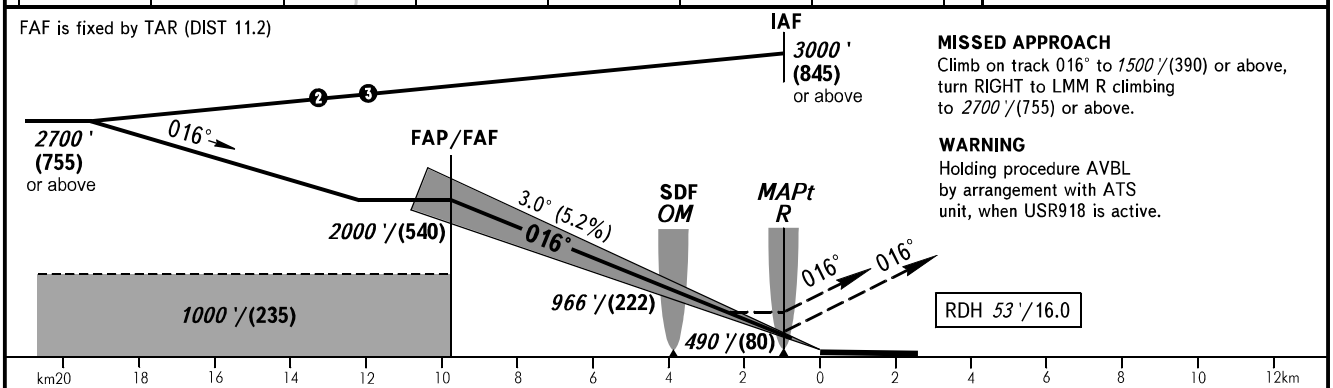
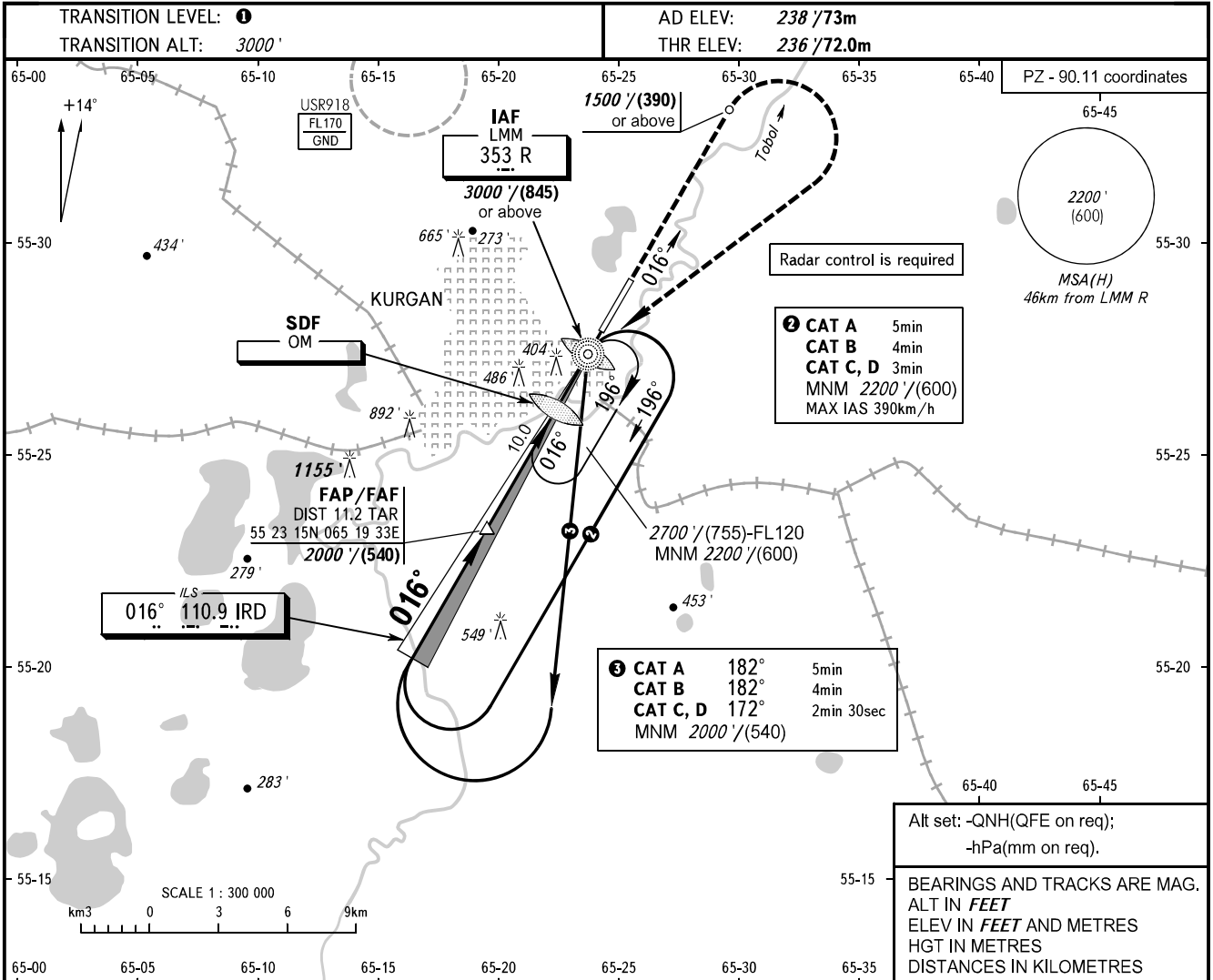


**INSTRUMENT
APPROACH
CHART - ICAO**

VYSHKA 120.300

**KURGAN, RUSSIA
KURGAN
ILS X, LOC X RWY 02**



OCA(H)		A	B	C	D						
Straight-in Approach	CAT I	432' (196')	444' (208')	452' (216')	463' (227')						
		(60)	(63)	(66)	(71)						
	LOC	With SDF 600' (370')	600' (370')	600' (370')	600' (370')						
		WO SDF 610' (380')	610' (380')	610' (380')	610' (380')						
		(110)	(110)	(110)	(110)						
		(115)	(115)	(115)	(115)						
GROUND SPEED		km/h	150	180	210	240	270	300	330	360	390
RATE OF DESCENT		m/s	2.2	2.6	3.0	3.5	3.9	4.3	4.8	5.2	5.6
		ft/min	427	512	597	682	768	853	938	1024	1109

① **TRANSITION LEVEL:**
- FL040 when QNH is 1013 hPa (760mm mercury column) or above;
- FL050 when QNH is 977 hPa (733mm mercury column) or above, but less than 1013 hPa (760mm mercury column);
- FL060 when QNH is less than 977 hPa (733mm mercury column).

NOTE:
1. MAPt at LMM R. Timing not authorized for defining MAPt (LOC).
2. Turn before passing MAPt (LOC) is PROHIBITED.