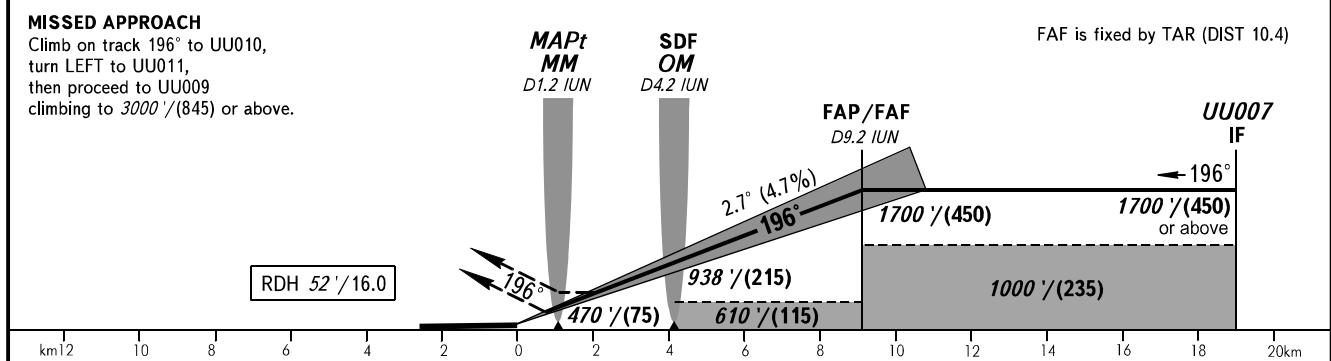
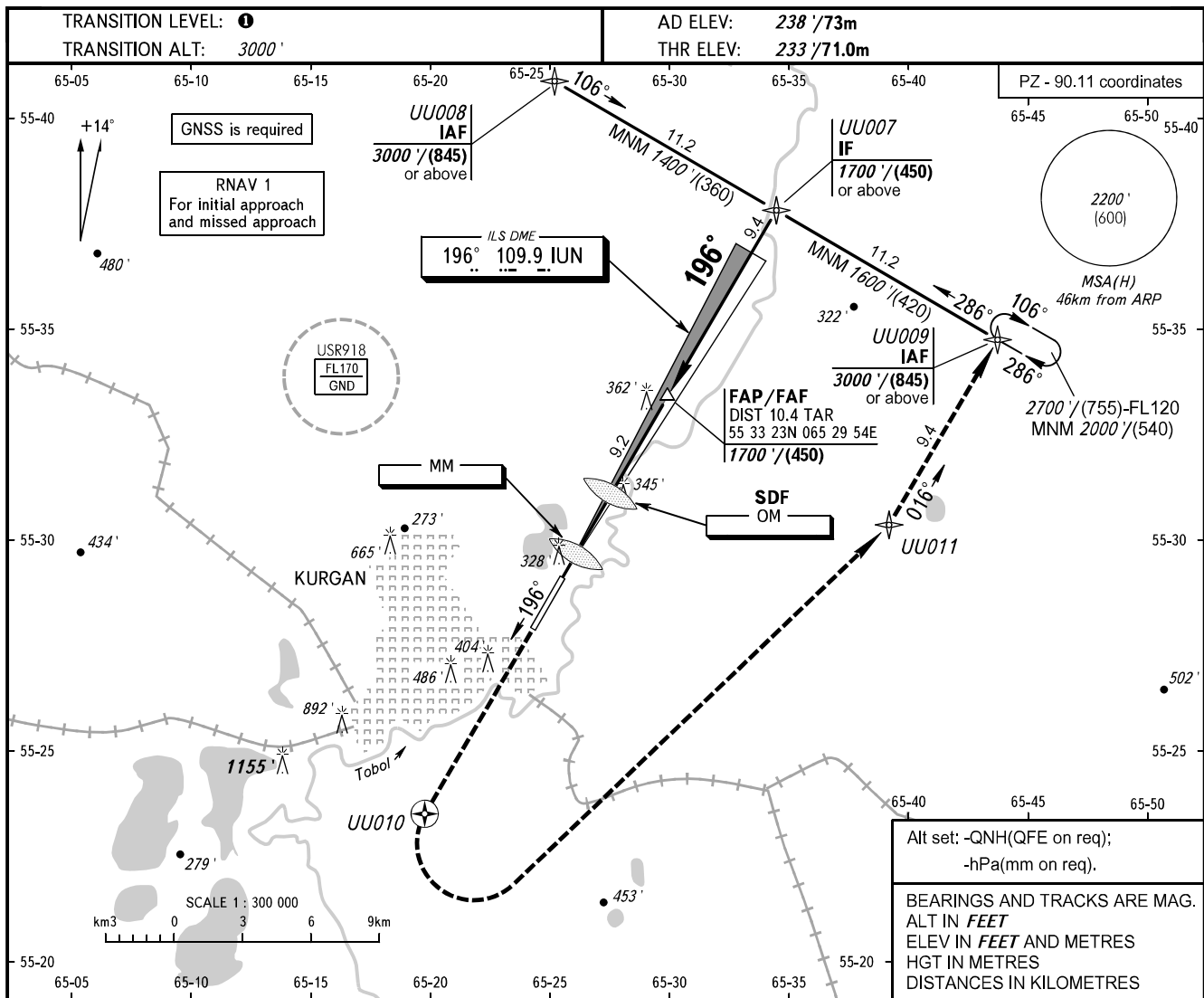


INSTRUMENT  
APPROACH  
CHART - ICAO

VYSHKA 120.300

KURGAN, RUSSIA  
KURGAN  
ILS Z, LOC Z RWY 20



OCA(H)		A	B	C	D	① TRANSITION LEVEL:							
Straight-in Approach	CAT I	429' (196') (60)	441' (208') (64)	449' (216') (66)	460' (227') (70)	- FL040 when QNH is 1013 hPa (760mm mercury column) or above;							
		600' (370') (115)	600' (370') (115)	600' (370') (115)	600' (370') (115)	- FL050 when QNH is 977 hPa (733mm mercury column) or above, but less than 1013 hPa (760mm mercury column);							
	LOC	With SDF 610' (380') (115)	610' (380') (115)	610' (380') (115)	610' (380') (115)	- FL060 when QNH is less than 977 hPa (733mm mercury column).							
GROUND SPEED		km/h	150	180	210	240	270	300	330	360	390	NOTE: 1. MAPt at MM. Timing not authorized for defining MAPt (LOC). 2. Turn before passing MAPt (LOC) is PROHIBITED.	
RATE OF DESCENT		m/s	2.0	2.4	2.7	3.1	3.5	3.9	4.3	4.7	5.1		
		ft/min	385	463	540	617	694	771	848	925	1002		