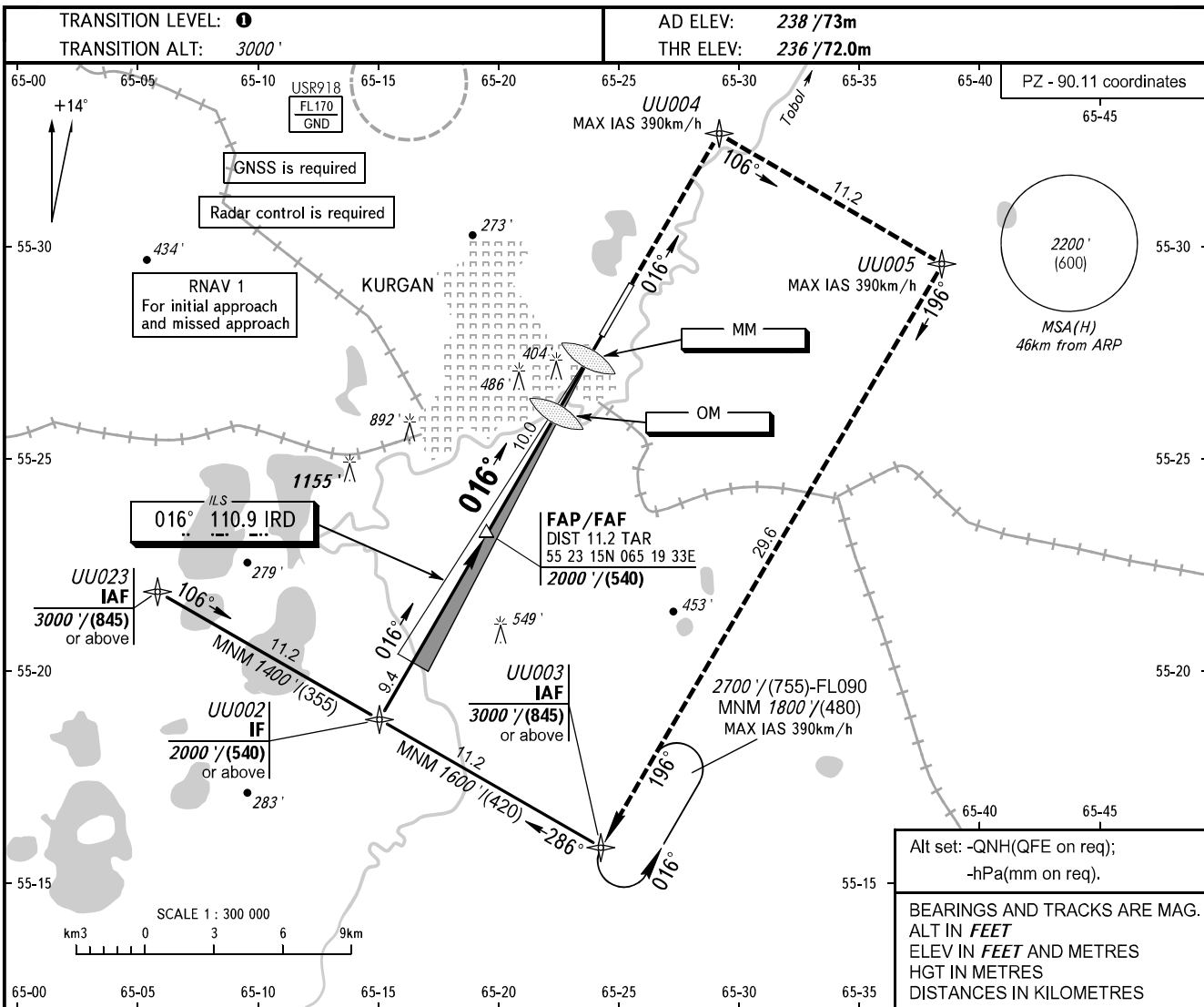


**INSTRUMENT  
APPROACH  
CHART - ICAO**

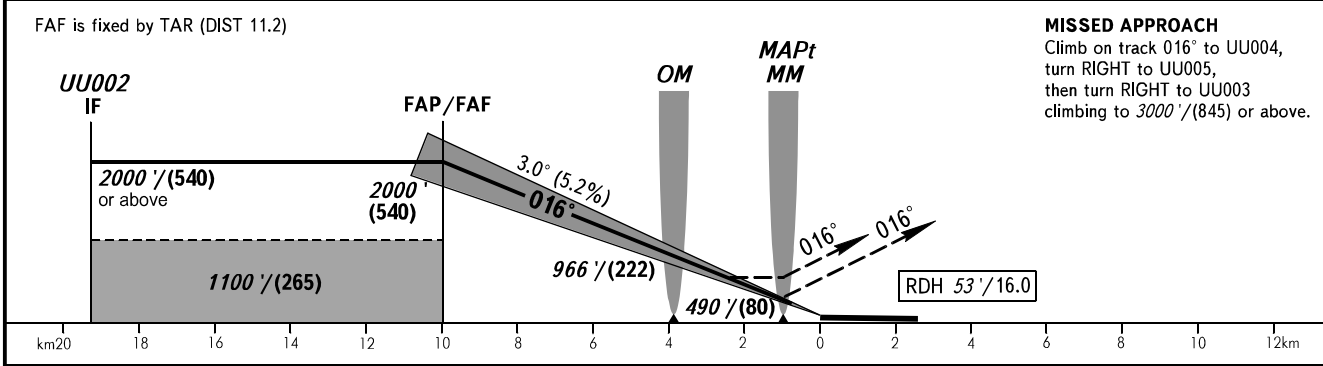
VYSHKA **120.300**

**KURGAN, RUSSIA**  
KURGAN  
ILS Z, LOC Z RWY 02



Alt set: -QNH(QFE on req);  
-hPa(mm on req).

BEARINGS AND TRACKS ARE MAG.  
ALT IN FEET  
ELEV IN FEET AND METRES  
HGT IN METRES  
DISTANCES IN KILOMETRES



**MISSED APPROACH**  
Climb on track 016° to UU004,  
turn RIGHT to UU005,  
then turn RIGHT to UU003  
climbing to 3000' / (845) or above.

FAF is fixed by TAR (DIST 11.2)

OCA(H)		A	B	C	D
Straight-in Approach	CAT I	432' (196') (60)	444' (208') (63)	452' (216') (66)	463' (227') (71)
	LOC	620' (390') (120)	620' (390') (120)	620' (390') (120)	620' (390') (120)

**TRANSITION LEVEL:**

- FL040 when QNH is 1013 hPa (760mm mercury column) or above;
- FL050 when QNH is 977 hPa (733mm mercury column) or above, but less than 1013 hPa (760mm mercury column);
- FL060 when QNH is less than 977 hPa (733mm mercury column).

**NOTE:**

- MAPt at MM. Timing not authorized for defining MAPt (LOC).
- Turn before passing MAPt (LOC) is PROHIBITED.

GROUND SPEED	km/h	150	180	210	240	270	300	330	360	390
RATE OF DESCENT	m/s	2.2	2.6	3.0	3.5	3.9	4.3	4.8	5.2	5.6
	ft/min	427	512	597	682	768	853	938	1024	1109

CHANGE: NOTE