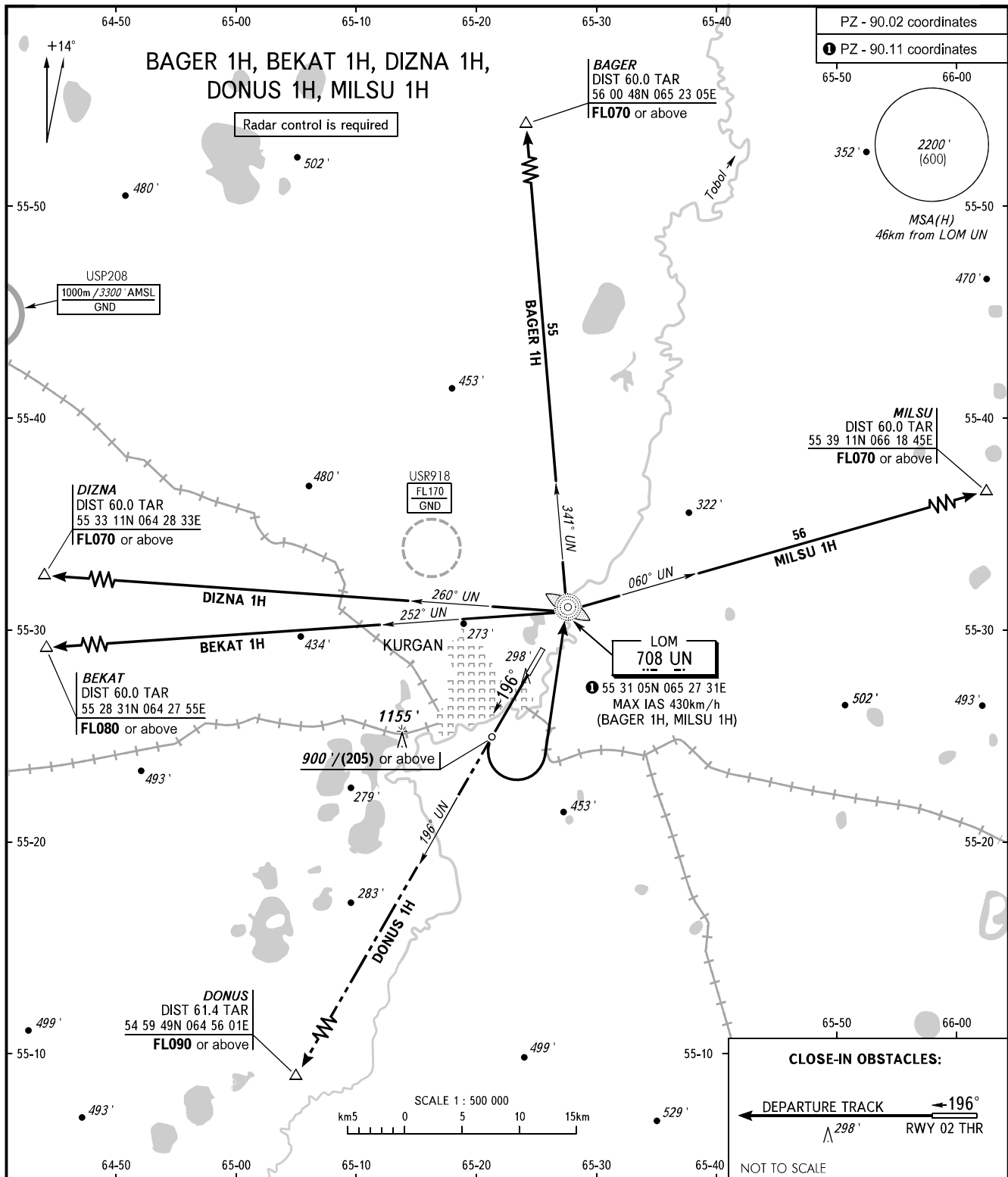


STANDARD DEPARTURE CHART
INSTRUMENT (SID) - ICAO

TRANSITION
ALTITUDE: 3000'

KURGAN, RUSSIA
KURGAN
RWY 20



VYSHKA 120.300

WARNING:

1. The minimum climb gradient required due to the airspace structure 4.5% up to FL090 for SID DONUS 1H.
2. SID DONUS 1H - by ATS unit.
3. SID BEKAT 1H, DIZNA 1H shall be executed by arrangement with ATS unit when USR918 is active.

BEARINGS AND TRACKS ARE MAGNETIC
ALTITUDES AND ELEVATIONS IN FEET
HEIGHTS IN METRES
DISTANCES IN KILOMETRES

Alt set: -QNH(QFE on req);
-hPa(mm on req).