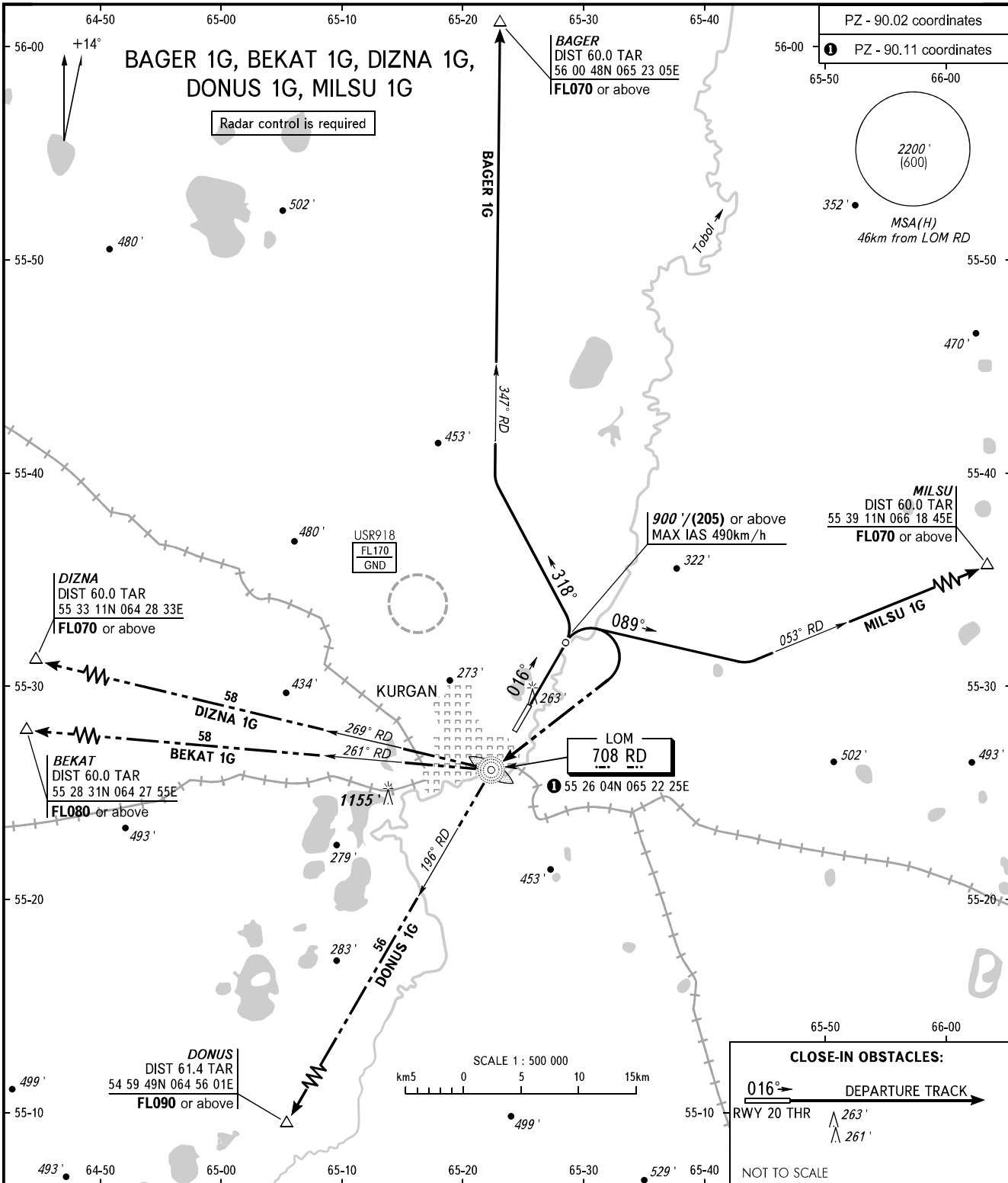


STANDARD DEPARTURE CHART  
INSTRUMENT (SID) - ICAO

TRANSITION  
ALTITUDE: 3000'

KURGAN, RUSSIA  
KURGAN  
RWY 02



VYSHKA 120.300

**WARNING:**

- The minimum climb gradients required due to the airspace structure:
  - 3.4% up to FL070 for SID MILSU 1G;
  - 3.5% up to FL090 for SID DONUS 1G;
  - 3.9% up to FL070 for SID BAGER 1G.
- SID BEKAT 1G, DIZNA 1G, DONUS 1G - by ATS unit.

BEARINGS AND TRACKS ARE MAGNETIC  
ALTITUDES AND ELEVATIONS IN FEET  
HEIGHTS IN METRES  
DISTANCES IN KILOMETRES

Alt set: -QNH(QFE on req);  
-hPa(mm on req).

CHANGE: New chart