

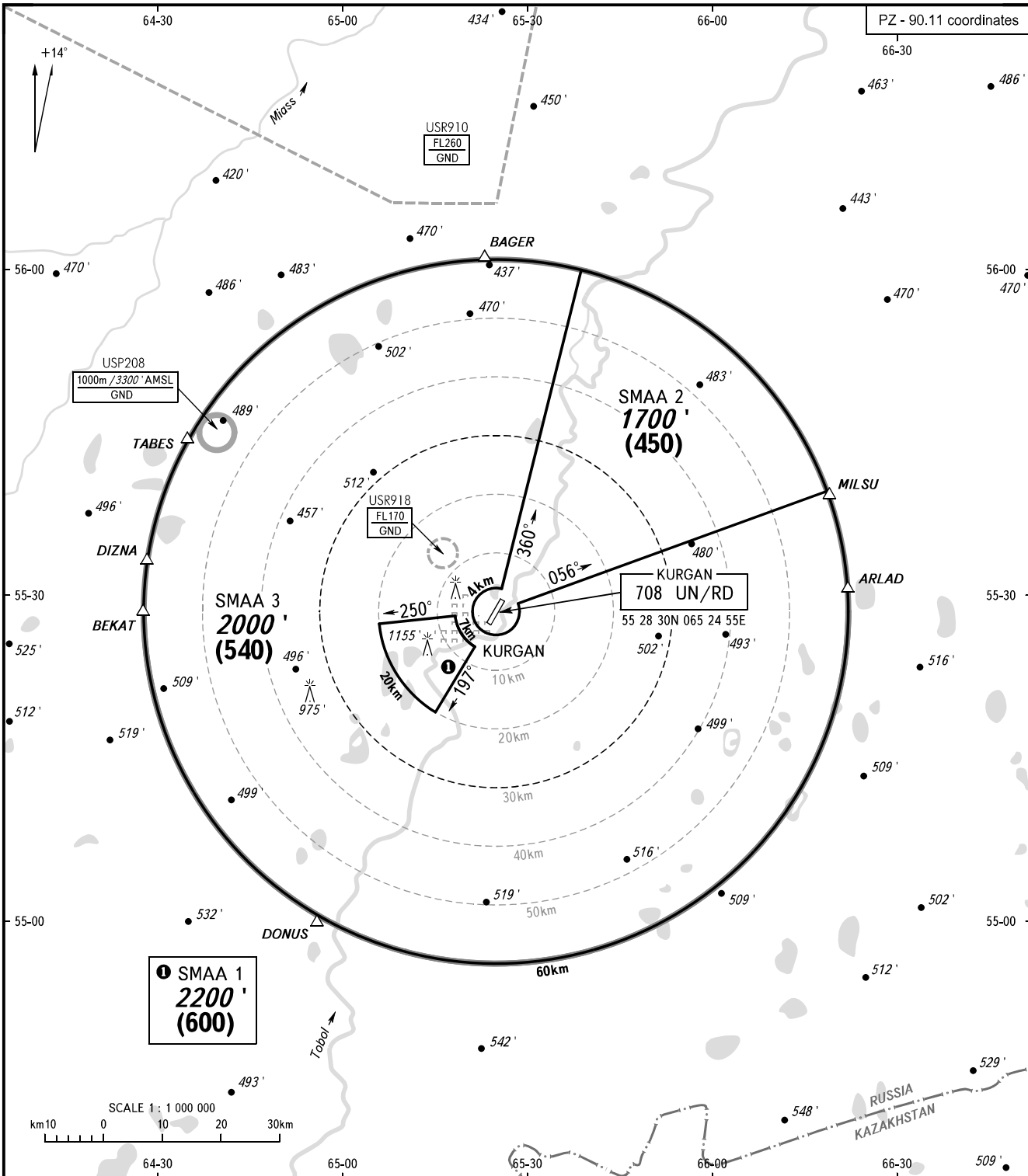
ATC SURVEILLANCE MINIMUM  
ALTITUDE CHART - ICAO

ELEV  
238 / 73m

TRANSITION ALT: 3000'

KURGAN, RUSSIA

KURGAN



**SMAA 1**  
**2200'**  
**(600)**

- WARNING:**
1. The chart may only be used for cross-checking of altitudes assigned while the aircraft is under radar control.
  2. When vectoring is carried out under low-temperature conditions, minimum vectoring altitudes must be corrected by altimeter temperature correction by ATC.
  3. RADIO COMMUNICATION FAILURE: according to the procedures specified in AIP.

VYSHKA 120.300

BEARINGS AND TRACKS ARE MAGNETIC  
ALTITUDES AND ELEVATIONS IN FEET  
HEIGHTS IN METRES  
DISTANCES IN KILOMETRES

Alt set: -QNH(QFE on req);  
-hPa(mm on req).

CHANGE: Heights

**KURGAN, RUSSIA**  
**KURGAN**

<b>SURVEILLANCE MINIMUM ALTITUDE AREAS</b>		
<b>IDENT</b>	<b>MNM ALT FT HGT (M)</b>	<b>LATERAL LIMITS (PZ-90.11 coordinates)</b>
SMAA 1	2200 (600)	552806N 0651818E, then anticlockwise by arc of a circle radius of 7 KM centred at 552830N 0652455E to 552516N 0652130E - 551915N 0651510E, then clockwise by arc of a circle radius of 20 KM centred at 552830N 0652455E to 552721N 0650603E - 552806N 0651818E.
SMAA 2	1700 (450)	553036N 0652550E - 555952N 0653852E, then clockwise by arc of a circle radius of 60 KM centred at 552830N 0652455E to 553922N 0661840E - 552914N 0652829E, then clockwise by arc of a circle radius of 4 KM centred at 552830N 0652455E to 553036N 0652550E.
SMAA 3	2000 (540)	Kurgan CTA boundaries, excluding SMAA 1, SMAA 2 boundaries.