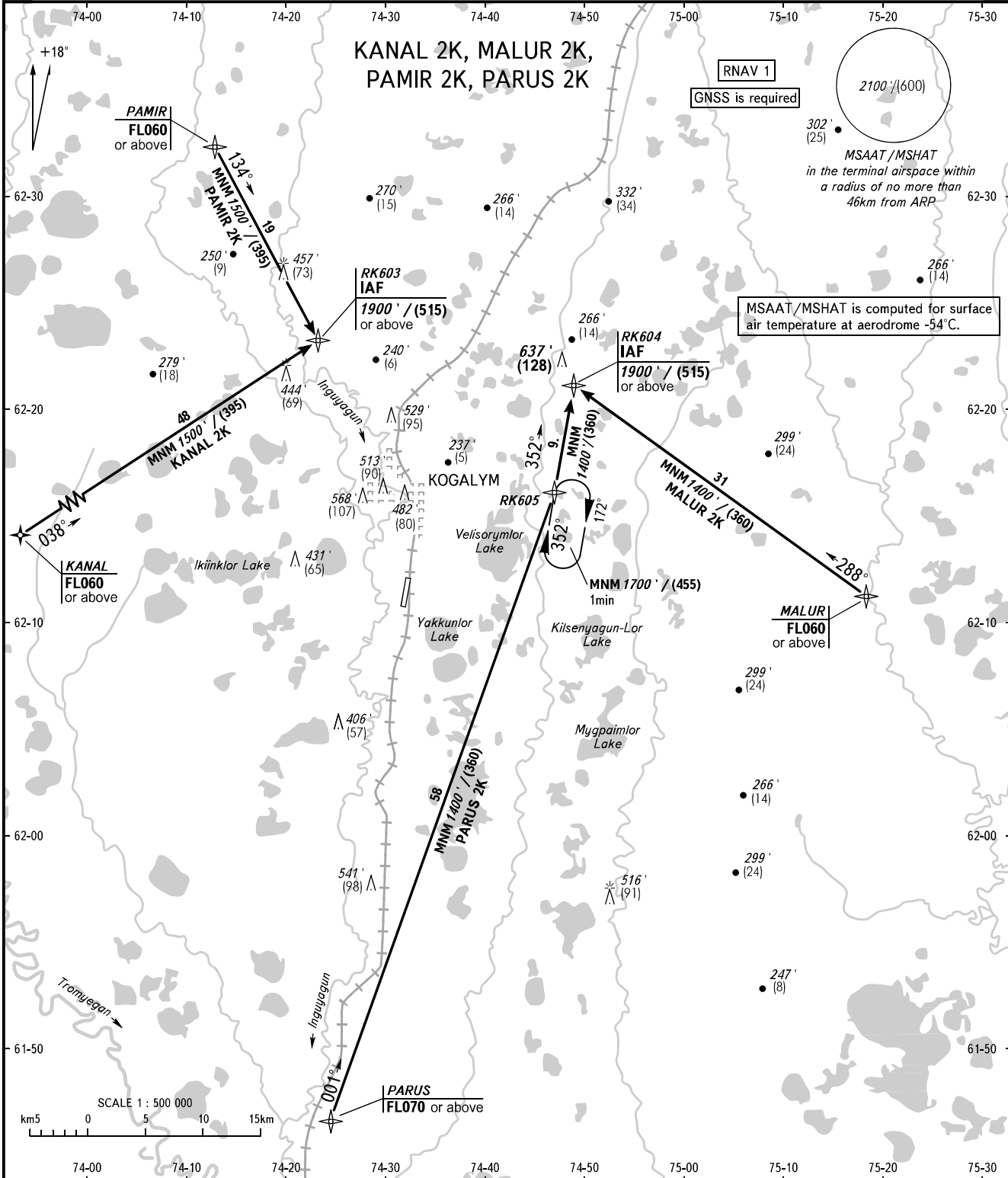


STANDARD ARRIVAL CHART
INSTRUMENT (STAR) - ICAO

KOGALYM, RUSSIA
KOGALYM
RNAV RWY 17

TRANSITION
LEVEL: **1**



SURGUT APPROACH **129.300**
KOGALYM TOWER **119.400**

- 1** TRANSITION LEVEL:
- FL040 when QNH is 1013 hPa (760mm mercury column) or above;
 - FL050 when QNH is 977 hPa (733mm mercury column) or above, but less than 1013 hPa (760mm mercury column);
 - FL060 when QNH is less than 977 hPa (733mm mercury column).

BEARINGS AND TRACKS ARE MAGNETIC
ALTITUDES IN FEET, HEIGHTS IN METRES
ELEVATIONS IN FEET AND METRES
DISTANCES IN KILOMETRES

Alt set: -QNH(QFE on req);
-hPa(mm on req).

CHANGE: New chart