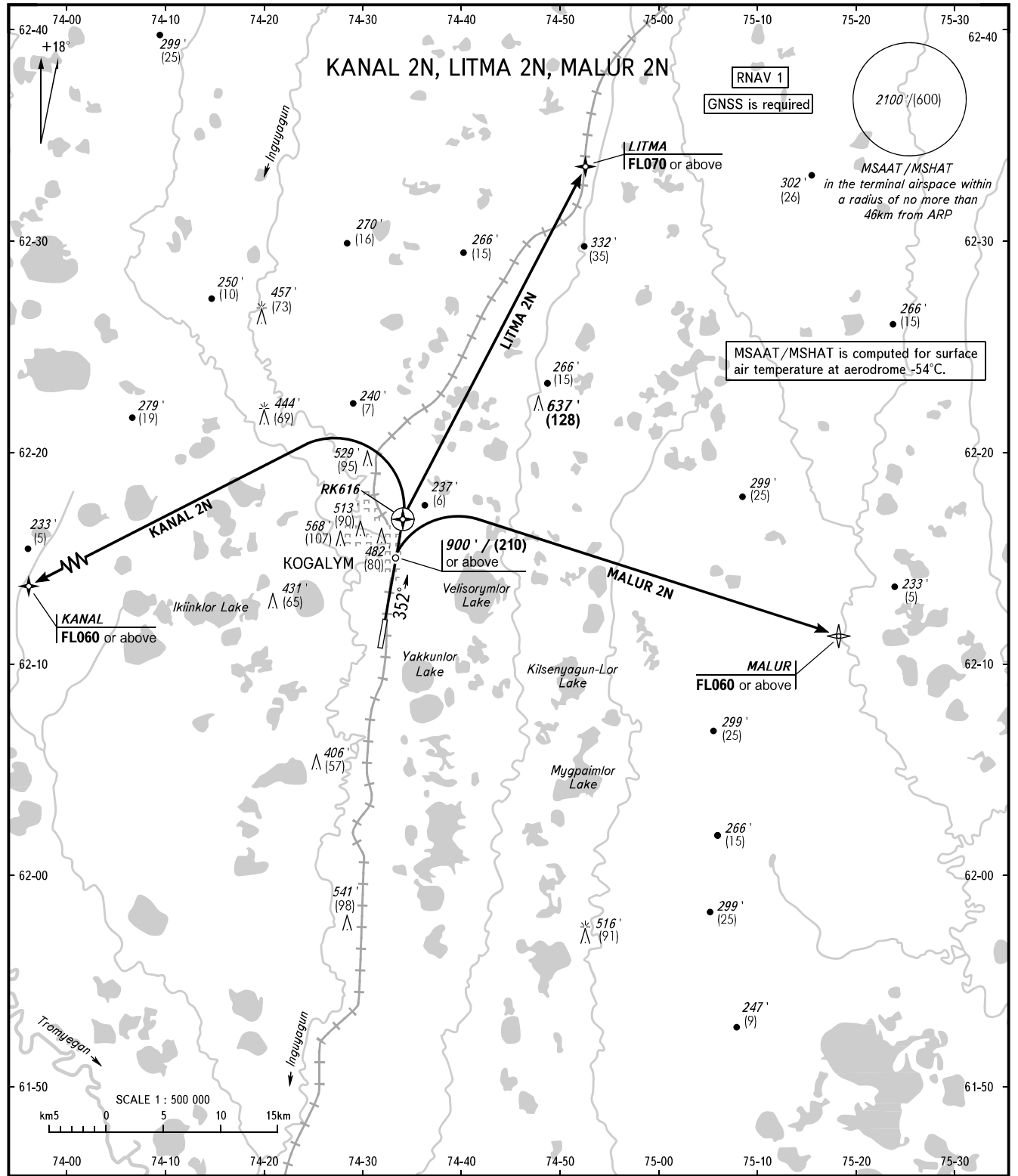


STANDARD DEPARTURE CHART  
INSTRUMENT (SID) - ICAO

KOGALYM, RUSSIA  
KOGALYM  
RNAV RWY 35

TRANSITION ALT: 3000'



KOGALYM TOWER **119.400**  
SURGUT APPROACH **129.300**

**WARNING**  
The minimum climb gradients required due to the airspace structure:  
- 4.8% up to FL070 for LITMA 2N;  
- 4.0% up to FL060 for MALUR 2N,  
or by ATC instruction.

BEARINGS AND TRACKS ARE MAGNETIC  
ALTITUDES IN **FEET**, HEIGHTS IN METRES  
ELEVATIONS IN **FEET** AND METRES  
DISTANCES IN KILOMETRES

Alt set: -QNH(QFE on req);  
-hPa(mm on req).