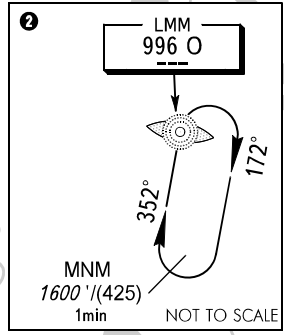
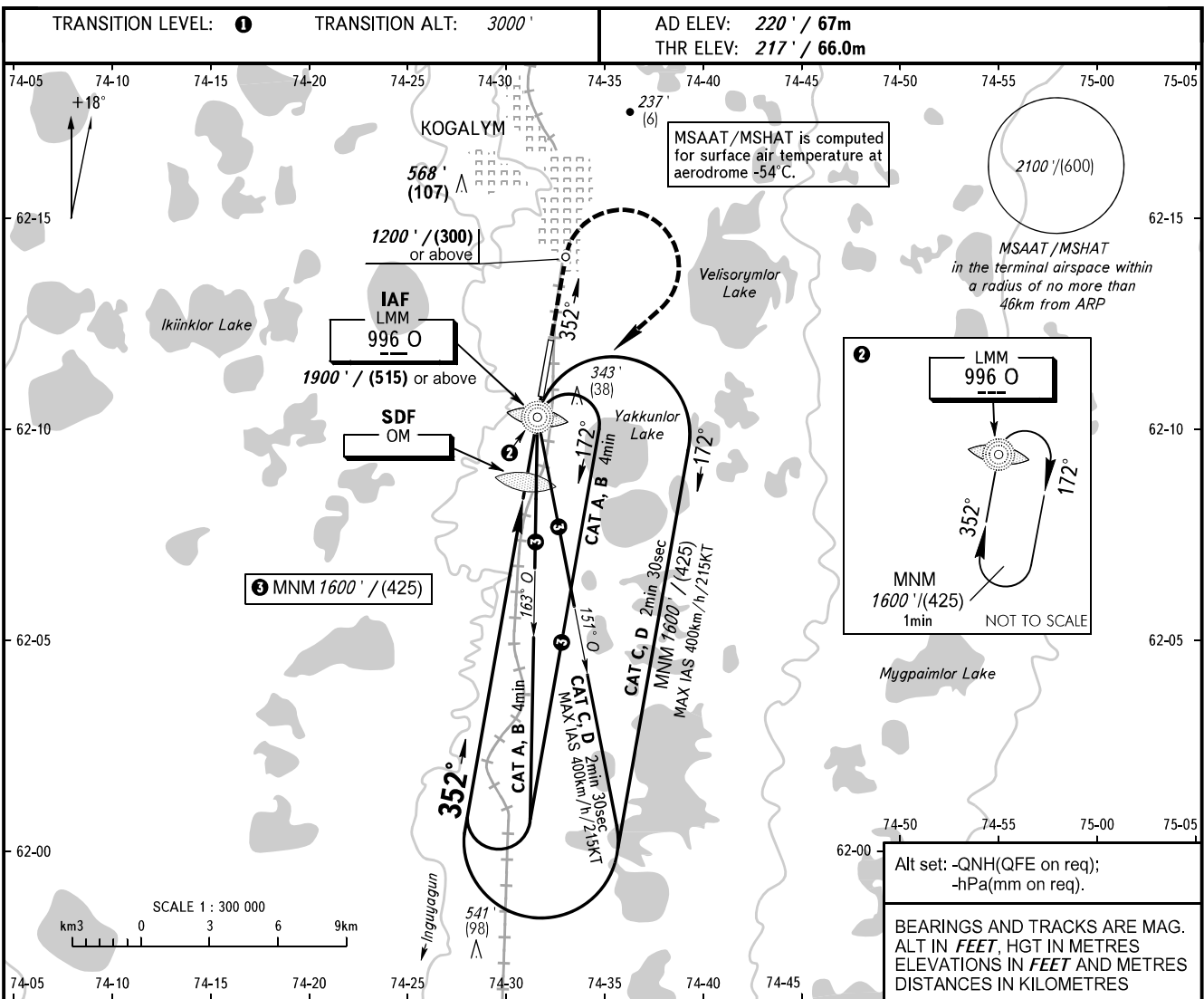


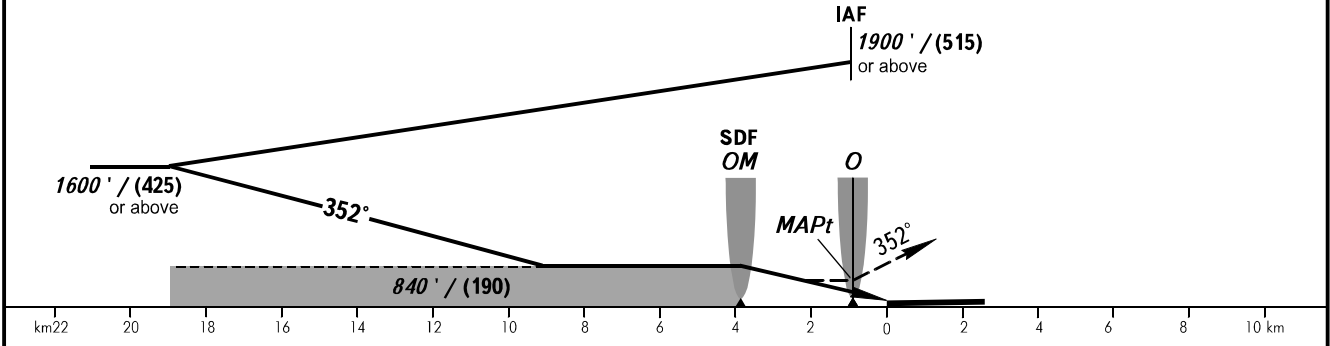
**INSTRUMENT  
APPROACH  
CHART - ICAO**

TOWER 119.400

**KOGALYM, RUSSIA**  
KOGALYM  
NDB X RWY 35



**MISSED APPROACH**  
Climb on track 352° to 1200' / (300) or above, turn RIGHT to LMM O climbing to 1600' / (425) or above.



OCA(H)		A	B	C	D
Straight-in Approach	With SDF	540' (320') (100)	540' (320') (100)	540' (320') (100)	540' (320') (100)
	WO SDF	840' (620') (190)	840' (620') (190)	840' (620') (190)	840' (620') (190)
Circling		840' (620') (190)	840' (620') (190)	960' (740') (230)	960' (740') (230)

**1** TRANSITION LEVEL:  
- FL040 when QNH is 1013 hPa (760mm mercury column) or above;  
- FL050 when QNH is 977 hPa (733mm mercury column) or above, but less than 1013 hPa (760mm mercury column);  
- FL060 when QNH is less than 977 hPa (733mm mercury column).

**WARNING:**  
1. MAPt at LMM O.  
2. Turn before MAPt is PROHIBITED.