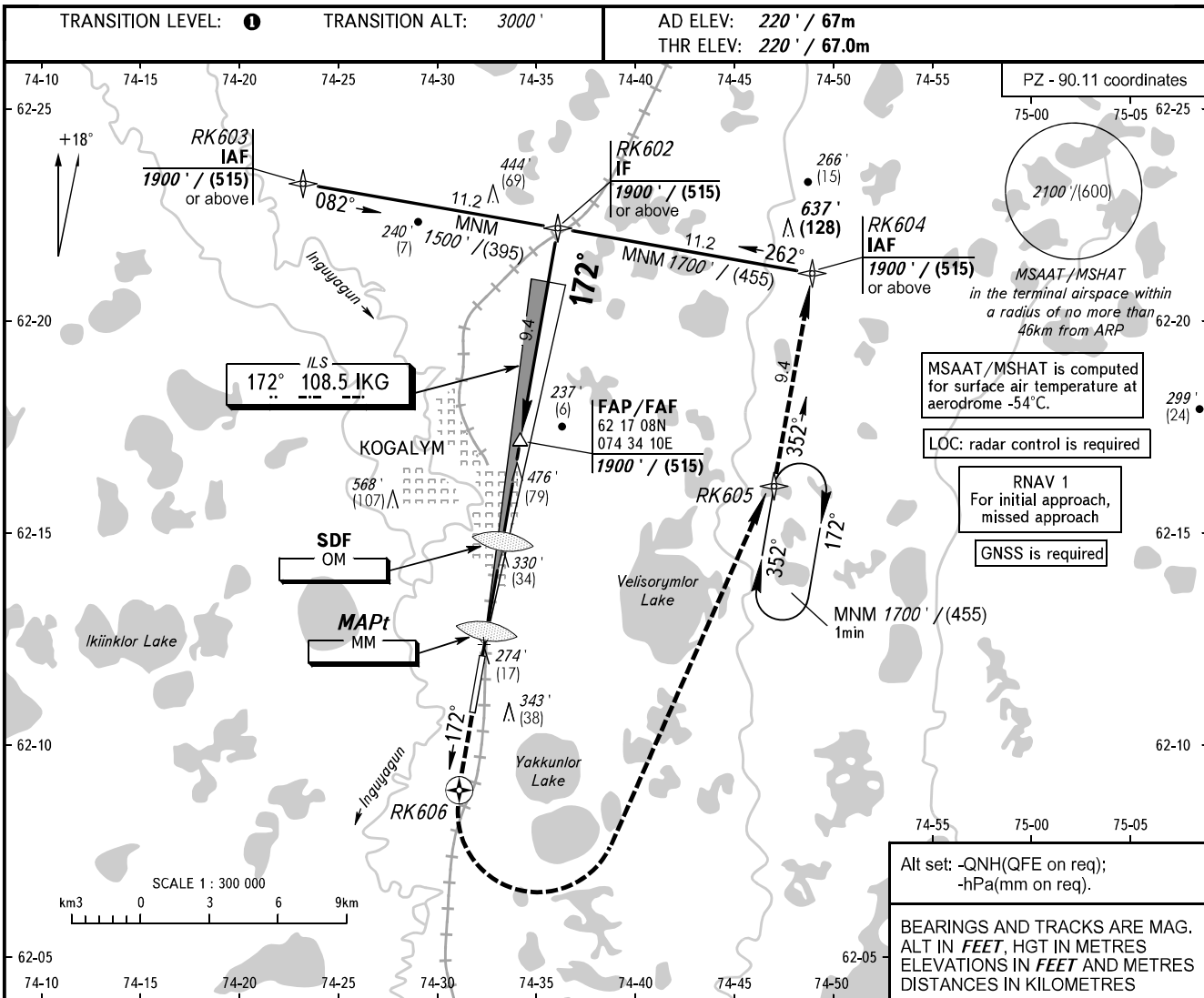


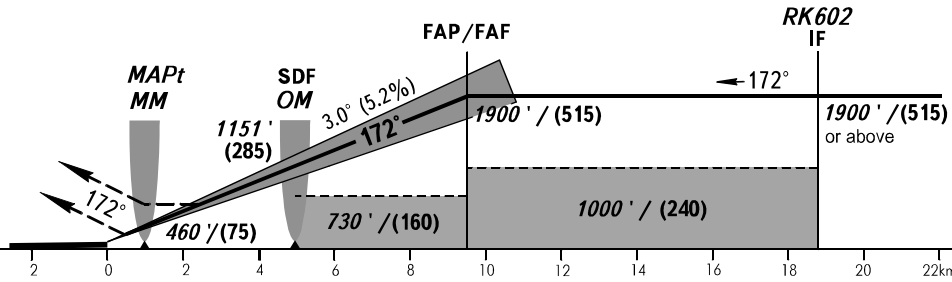
**INSTRUMENT  
APPROACH  
CHART - ICAO**

TOWER 119.400

**KOGALYM, RUSSIA**  
KOGALYM  
ILS Z CAT I, LOC Z RWY 17



**MISSED APPROACH**  
Climb on track 172° to RK606, turn LEFT to RK605, then to RK604 climbing to 1900' / (515) or above.



OCA(H)		A	B	C	D	<b>① TRANSITION LEVEL:</b> - FLO40 when QNH is 1013 hPa (760mm mercury column) or above; - FLO50 when QNH is 977 hPa (733mm mercury column) or above, but less than 1013 hPa (760mm mercury column); - FLO60 when QNH is less than 977 hPa (733mm mercury column).  <b>WARNING</b> MAPt at MM. Timing for defining MAPt is not authorized.					
Straight-in Approach	<b>CAT I</b>	366' (146') (45)	377' (157') (48)	390' (170') (52)	404' (184') (57)						
	<b>LOC</b>	<b>With SDF</b>	580' (360') (110)	580' (360') (110)	580' (360') (110)		580' (360') (110)				
		<b>WO SDF</b>	730' (510') (160)	730' (510') (160)	730' (510') (160)		730' (510') (160)				
Circling		730' (510') (160)	730' (510') (160)	960' (740') (230)	960' (740') (230)						
GROUND SPEED		km/h	150	180	210	240	270	300	330	360	390
		kt	81	97	113	130	146	162	178	194	211
RATE OF DESCENT		m/s	2.2	2.6	3.0	3.5	3.9	4.3	4.8	5.2	5.6
		ft/min	427	512	597	682	768	853	938	1024	1109

CHANGE: New chart