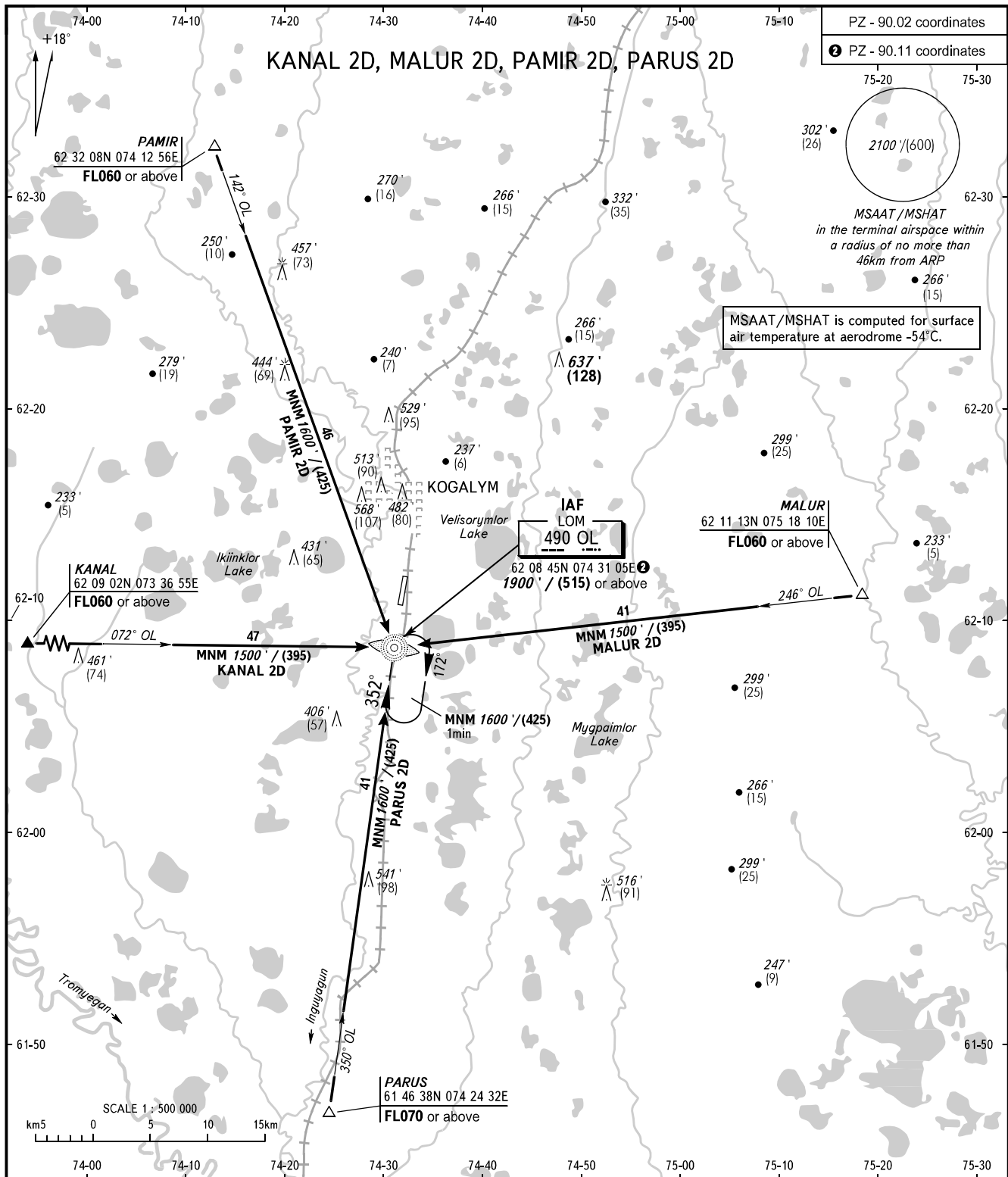


**KOGALYM, RUSSIA**  
KOGALYM  
RWY 35

**STANDARD ARRIVAL CHART**  
INSTRUMENT (STAR) - ICAO

TRANSITION  
LEVEL: **1**



SURGUT APPROACH **129.300**  
KOGALYM TOWER **119.400**

- 1** TRANSITION LEVEL:
- FL040 when QNH is 1013 hPa (760mm mercury column) or above;
  - FL050 when QNH is 977 hPa (733mm mercury column) or above, but less than 1013 hPa (760mm mercury column);
  - FL060 when QNH is less than 977 hPa (733mm mercury column).

BEARINGS AND TRACKS ARE MAGNETIC  
ALTITUDES IN **FEET**, HEIGHTS IN METRES  
ELEVATIONS IN **FEET** AND METRES  
DISTANCES IN KILOMETRES

Alt set: -QNH(QFE on req);  
-hPa(mm on req).