

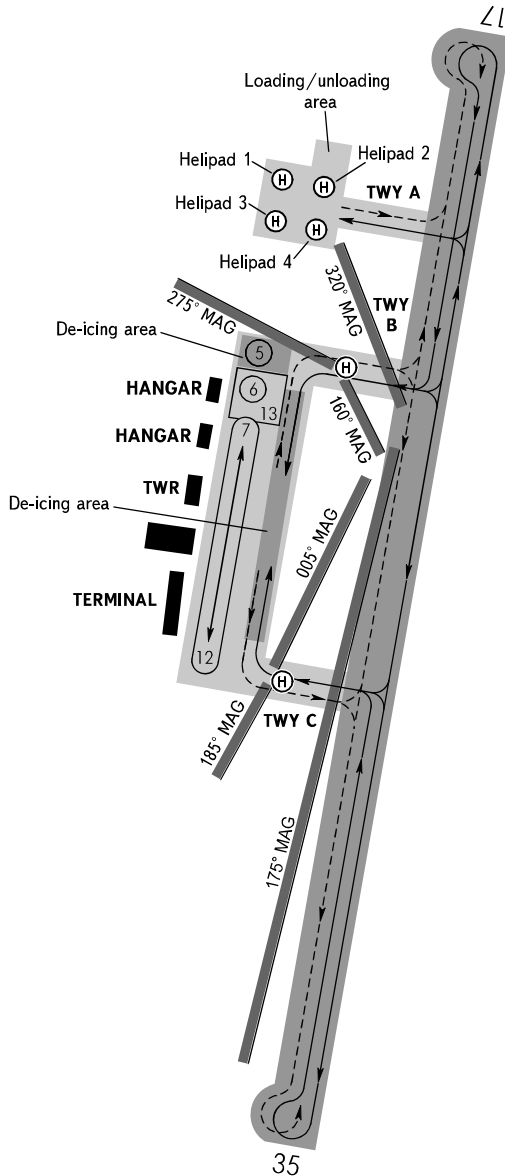
**AERODROME GROUND
MOVEMENT CHART - ICAO**

APRON **121.800**
TOWER **119.400**

KOGALYM, RUSSIA

KOGALYM

PZ - 90.11 coordinates



STANDS NR	LATITUDE (N)	LONGITUDE (E)
H1	62 12 01.94	074 31 55.76
H2	62 12 01.50	074 32 02.17
H3	62 11 59.73	074 31 55.92
H4	62 11 59.28	074 32 01.32
5	61 11 51.83	074 31 54.09
6	62 11 50.39	074 31 53.36
7	62 11 48.94	074 31 52.81
8	62 11 47.47	074 31 52.46
9	62 11 46.02	074 31 51.93
10	62 11 44.56	074 31 51.38
11	62 11 43.11	074 31 50.85
12	62 11 41.64	074 31 50.55
13	62 11 49.88	074 31 53.30

NOTE:

- Taxiway edge lights are installed on all taxiways.
- The following limiting sectors are established for helipads (H1-H4), beyond which it is prohibited to carry out take-off/landing:
 - H1 in sector 135° - 185° MAG;
 - H2 in sector 140° - 195° MAG;
 - H3 in sector 125° - 185° MAG;
 - H4 in sector 135° - 195° MAG;
 Helipad on TWY B 160° - 275° MAG;
 Helipad on TWY C 185° - 005° MAG.
- Take-off/landing are permitted from/on the runway between TWY A and TWY C both as running and helicopter-type take-off/landing without additional marking of take-off and landing position taking into account limiting sector 175° - 320° MAG.
- De-icing treatment of ACFT is performed on stand 5 and taxi routes on the apron.

Not to scale

APRONS:

Surface: - Reinforced Concrete
 Strength: - PCN 25/R/A/X/T (15 MAR-15 NOV)
 PCN 35/R/A/X/T (16 MAR-14 NOV)

TAXIWAYS:

Width: A - 12m
 B, C - 22m
 Surface: A, B, C- Reinforced Concrete
 Strength: A - PCN 23/R/A/X/T
 B, C - PCN 25/R/A/X/T (15 MAR-15 NOV)
 PCN 35/R/A/X/T (16 MAR-14 NOV)

WARNING:

- Taxiing into/out of stand 13: under own engines power facing south or north.
 When stand 13 is occupied, stands 5-8 are not AVBL.
 When stand 8 is occupied, stand 13 is AVBL as a cul-de-sac stand.
- Taxiing of Il-76 and An-12 ACFT shall be carried out strictly along the centre lines under inboard engines power.

ACFT types:

An-12, An-72, An-74, Tu-134, Tu-154, Yak-42, ATR-42/72 and its modifications, A-320-200 and its modifications, B737-300/400/500/800, B737 MAX 8, Embraer 170 and its modifications, CL-600-2B19 (Challenger 850, CRJ-100/200) and its modifications, RRJ-95B/95LR
 An-24, An-26, An-28, An-140 and its modifications, An-148 and its modifications, Yak-40, Cessna 208 Grand Caravan, Hawker 800XP
 Il-18, Il-76, Tu-204-100, Tu-214, A-319-100 and its modifications, B757-200
 Mi-8 and smaller ACFT
 Mi-26

STANDS:

5-13
 5-12
 13
 5-7, H1-H4
 13