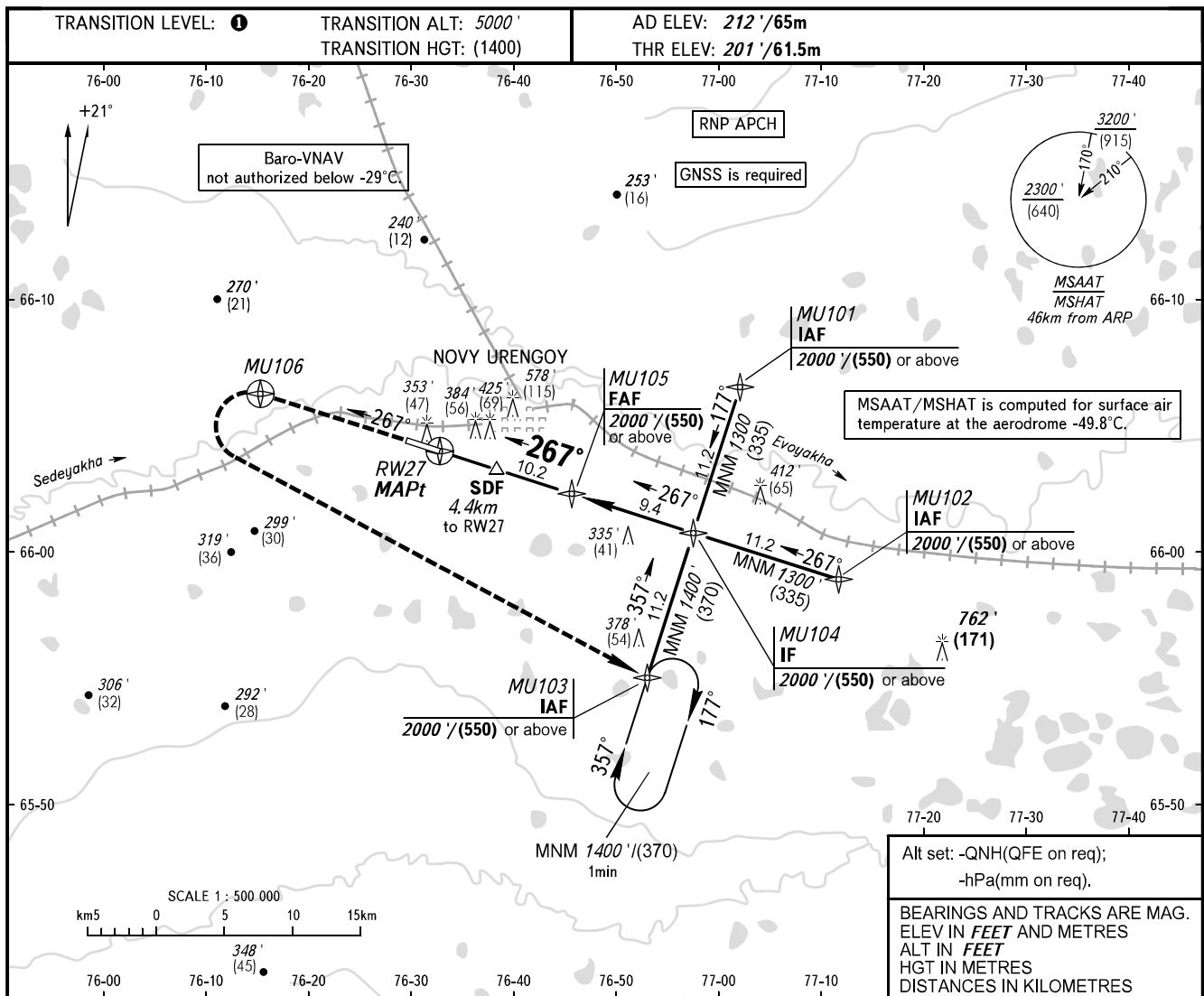


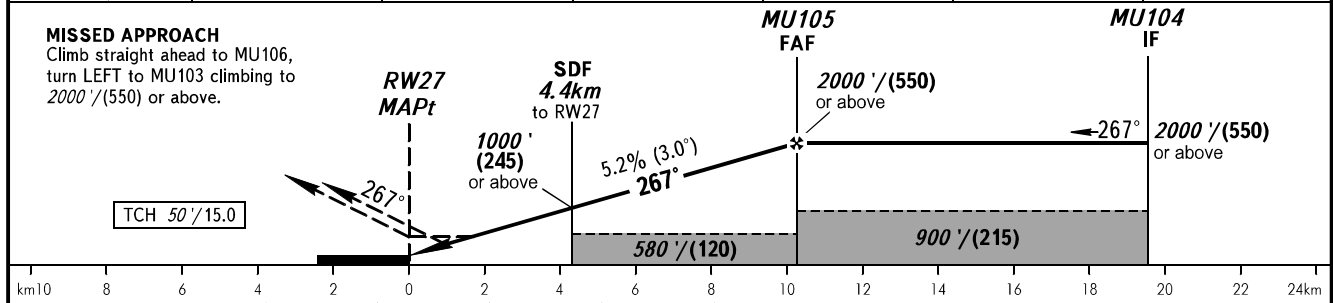
**INSTRUMENT  
APPROACH  
CHART - ICAO**

RADAR	124.700
TOWER	121.900

**NOVY URENGOY, RUSSIA**  
NOVY URENGOY  
RNP RWY 27



DIST TO RW27	2.0	4.0	6.0	8.0	10.0	10.2
ALTITUDE/HEIGHT	595'/(120)	939'/(225)	1283'/(330)	1627'/(435)	1971'/(539)	2000'/(550)



OCA(H)		A	B	C	D	DL						
Straight-in Approach	LNAV/VNAV	450' (250') 140(80)	460' (260') 145(80)	510' (310') 160(95)	520' (320') 160(100)	520' (320') 160(100)						
	LNAV	560' (360') 175(110)	560' (360') 175(110)	560' (360') 175(110)	560' (360') 175(110)	560' (360') 175(110)						
Circling		680' (470') 210(145)	720' (510') 220(155)	980' (760') 300(235)	980' (760') 300(235)	980' (760') 300(235)						
GROUND SPEED		km/h		150	180	210	240	270	300	330	360	390
		kt		81	97	113	130	146	162	178	194	211
RATE OF DESCENT		m/s		2.2	2.6	3.1	3.5	3.9	4.4	4.8	5.2	5.7
		ft/min		430	516	602	688	774	860	946	1031	1117

**1** TRANSITION LEVEL:  
- FL060 when QNH is 1013 hPa (760mm mercury column) or above;  
- FL070 when QNH is 977 hPa (733mm mercury column) or above, but less than 1013 hPa (760mm mercury column);  
- FL080 when QNH is less than 977 hPa (733mm mercury column).