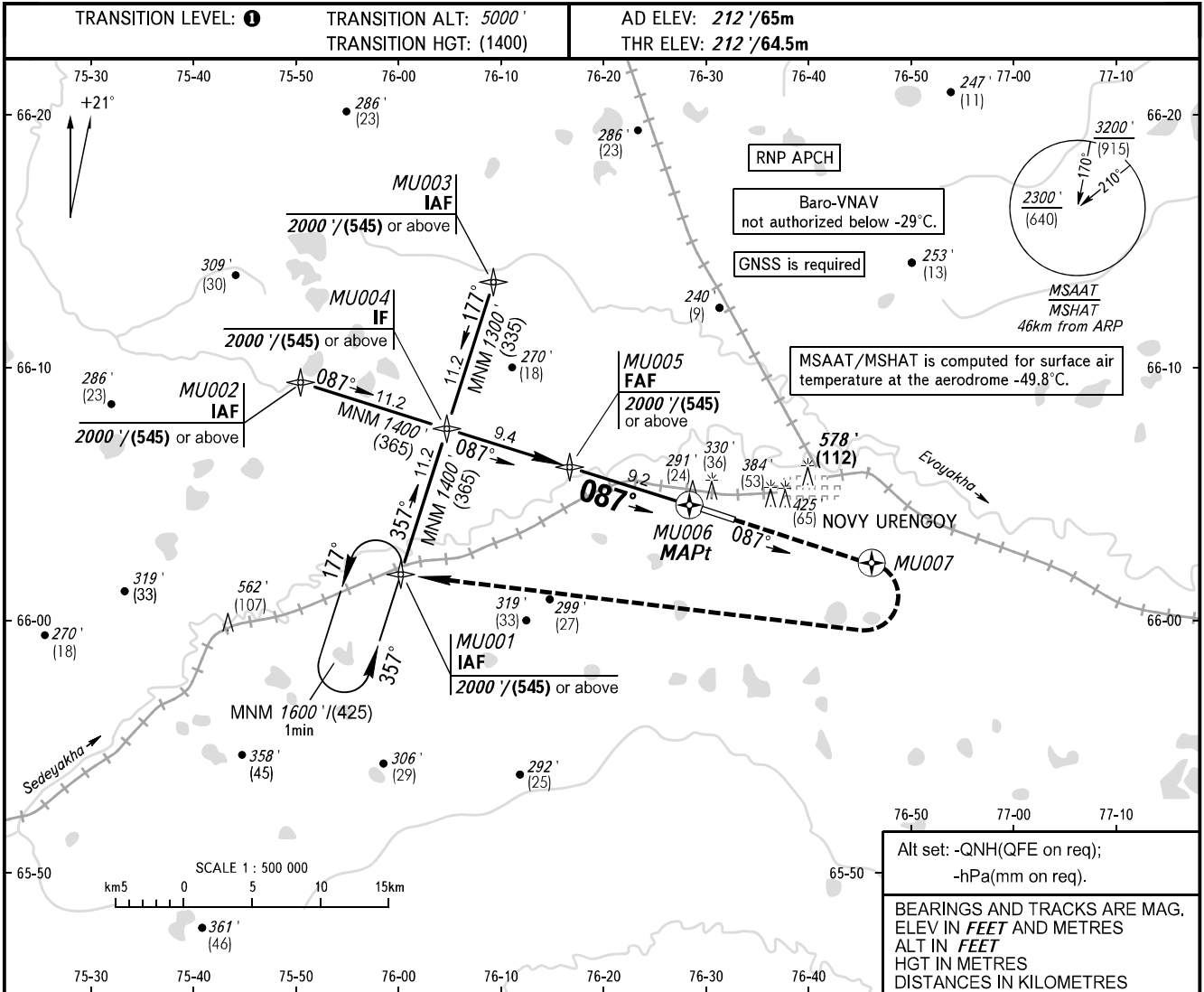


**INSTRUMENT
APPROACH
CHART - ICAO**

NOVY URENGOY, RUSSIA
NOVY URENGOY
RNP RWY 09

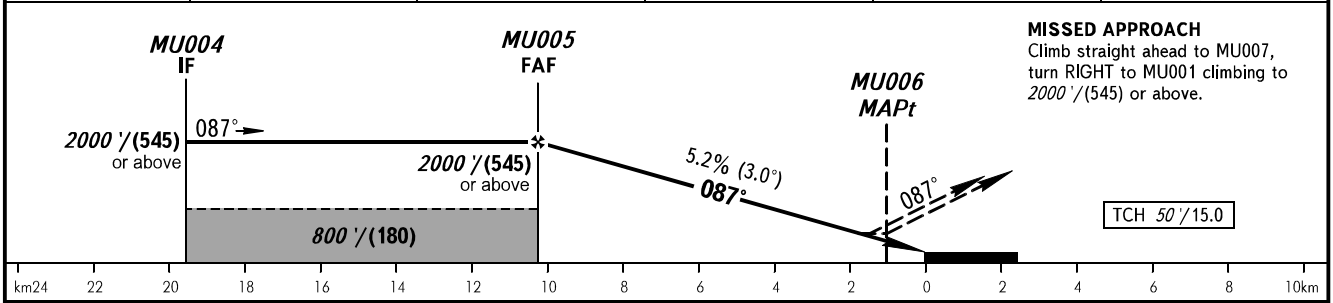
RADAR	124.700
TOWER	121.900



Alt set: -QN(H)(QFE on req);
-hPa(mm on req).

BEARINGS AND TRACKS ARE MAG.
ELEV IN FEET AND METRES
ALT IN FEET
HGT IN METRES
DISTANCES IN KILOMETRES

DIST to MU006	9.2	8.0	6.0	4.0	2.0
ALTITUDE/HEIGHT	2000' / (545)	1797' / (483)	1453' / (378)	1109' / (273)	765' / (169)



MISSED APPROACH
Climb straight ahead to MU007, turn RIGHT to MU001 climbing to 2000' / (545) or above.

OCA(H)		A	B	C	D	DL
Straight-in Approach	LNAV / VNAV	460' (250') 145(80)	480' (270') 150(85)	480' (270') 150(85)	500' (280') 155(90)	500' (280') 155(90)
	LNAV	540' (330') 165(100)	540' (330') 165(100)	540' (330') 165(100)	540' (330') 165(100)	540' (330') 165(100)
Circling		680' (470') 210(145)	720' (510') 220(155)	980' (760') 300(235)	980' (760') 300(235)	980' (760') 300(235)

1 TRANSITION LEVEL:
 - FL060 when QNH is 1013 hPa (760mm mercury column) or above;
 - FL070 when QNH is 977 hPa (733mm mercury column) or above, but less than 1013 hPa (760mm mercury column);
 - FL080 when QNH is less than 977 hPa (733mm mercury column).

GROUND SPEED	km/h	150	180	210	240	270	300	330	360	390
	kt	81	97	113	130	146	162	178	194	211
RATE OF DESCENT	m/s	2.2	2.6	3.1	3.5	3.9	4.4	4.8	5.2	5.7
	ft/min	430	516	602	688	774	860	946	1031	1117