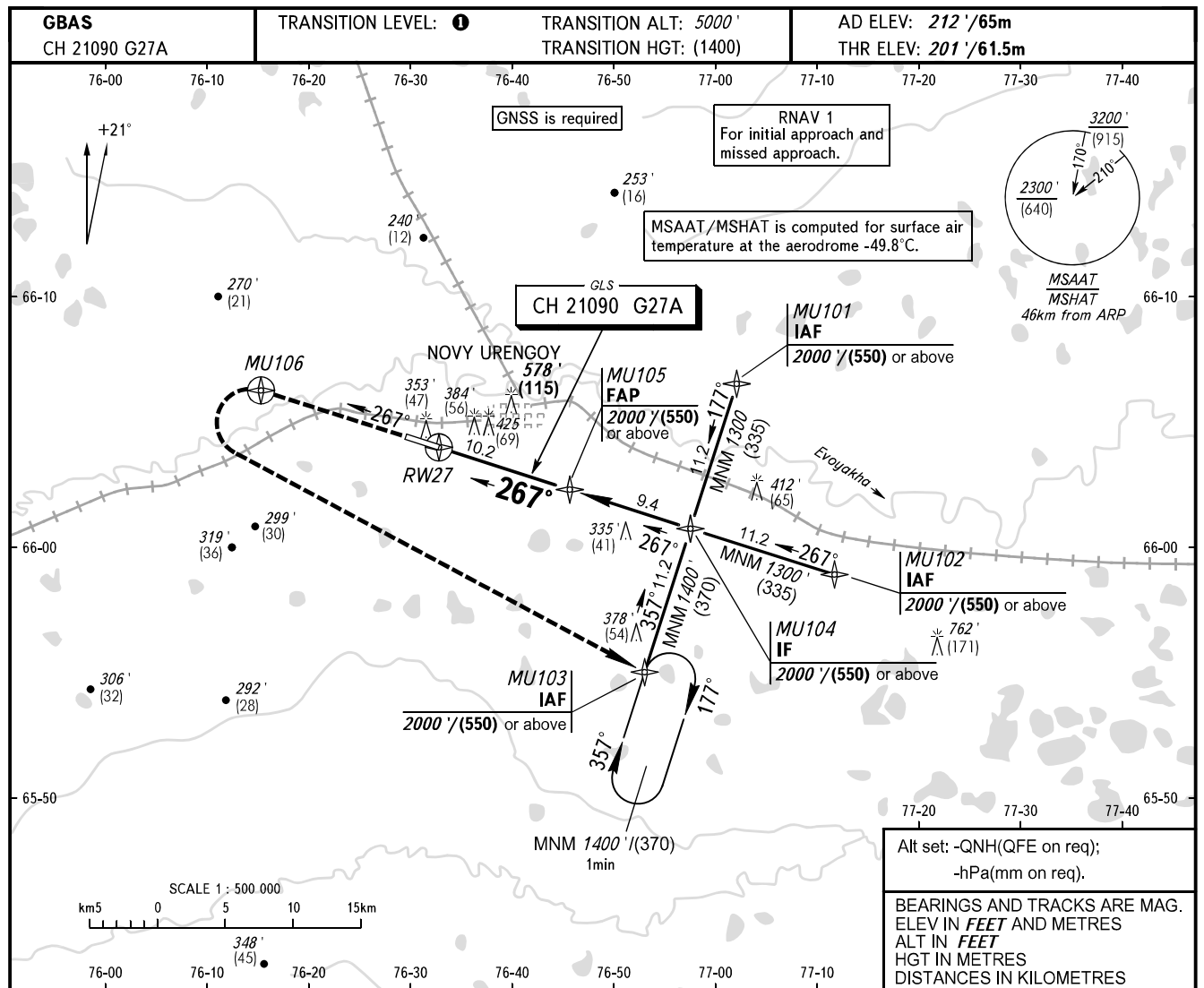


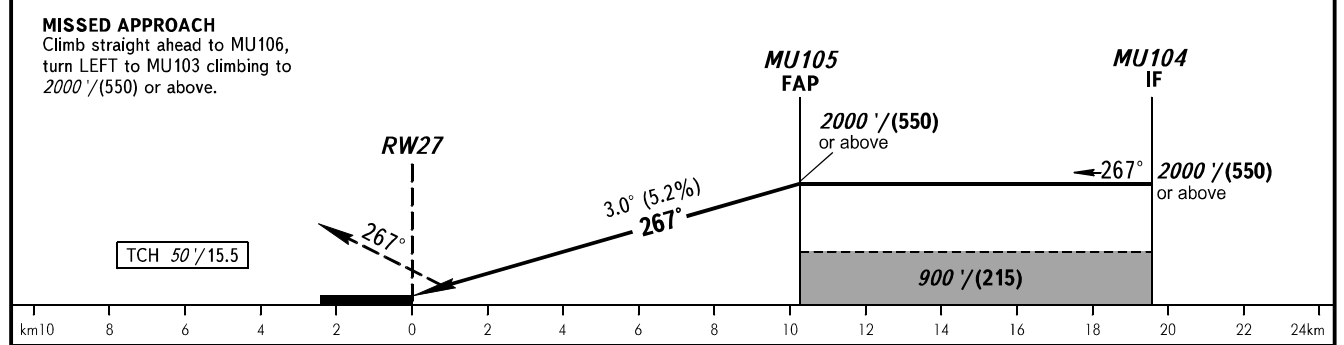
**INSTRUMENT  
APPROACH  
CHART - ICAO**

RADAR	124.700
TOWER	121.900

**NOVY URENGOY, RUSSIA**  
NOVY URENGOY  
GLS RWY 27



Alt set: -QNH(QFE on req);  
-hPa(mm on req).  
BEARINGS AND TRACKS ARE MAG.  
ELEV IN FEET AND METRES  
ALT IN FEET  
HGT IN METRES  
DISTANCES IN KILOMETRES



OCA(H)		A	B	C	D	DL
Straight-in Approach	CAT I	339' (139') 104(42)	348' (148') 107(45)	358' (158') 110(48)	371' (171') 114(52)	374' (174') 114(53)
	Circling	680' (470') 210(145)	720' (510') 220(155)	980' (760') 300(235)	980' (760') 300(235)	980' (760') 300(235)
GROUND SPEED		km/h	150	180	210	240
		kt	81	97	113	130
RATE OF DESCENT		m/s	2.2	2.6	3.1	3.5
		ft/min	430	516	602	688

**TRANSITION LEVEL:**  
- FL060 when QNH is 1013 hPa (760mm mercury column) or above;  
- FL070 when QNH is 977 hPa (733mm mercury column) or above, but less than 1013 hPa (760mm mercury column);  
- FL080 when QNH is less than 977 hPa (733mm mercury column).