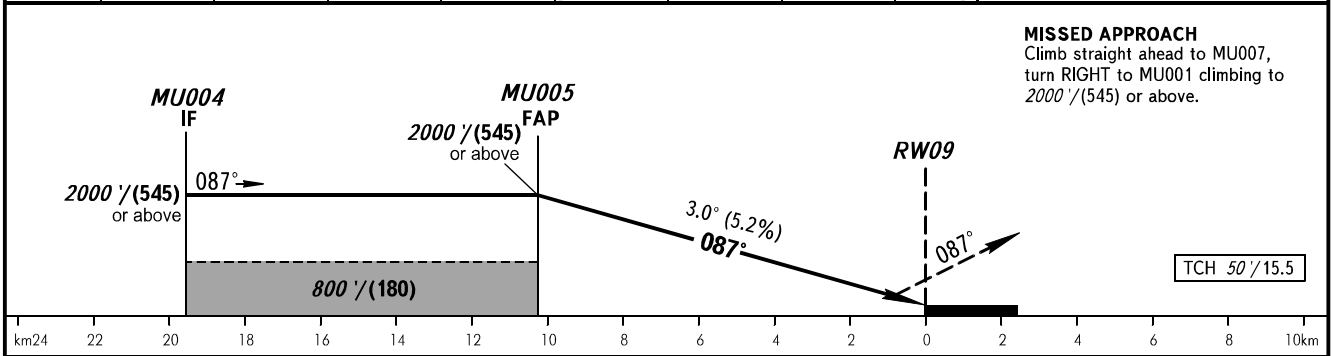
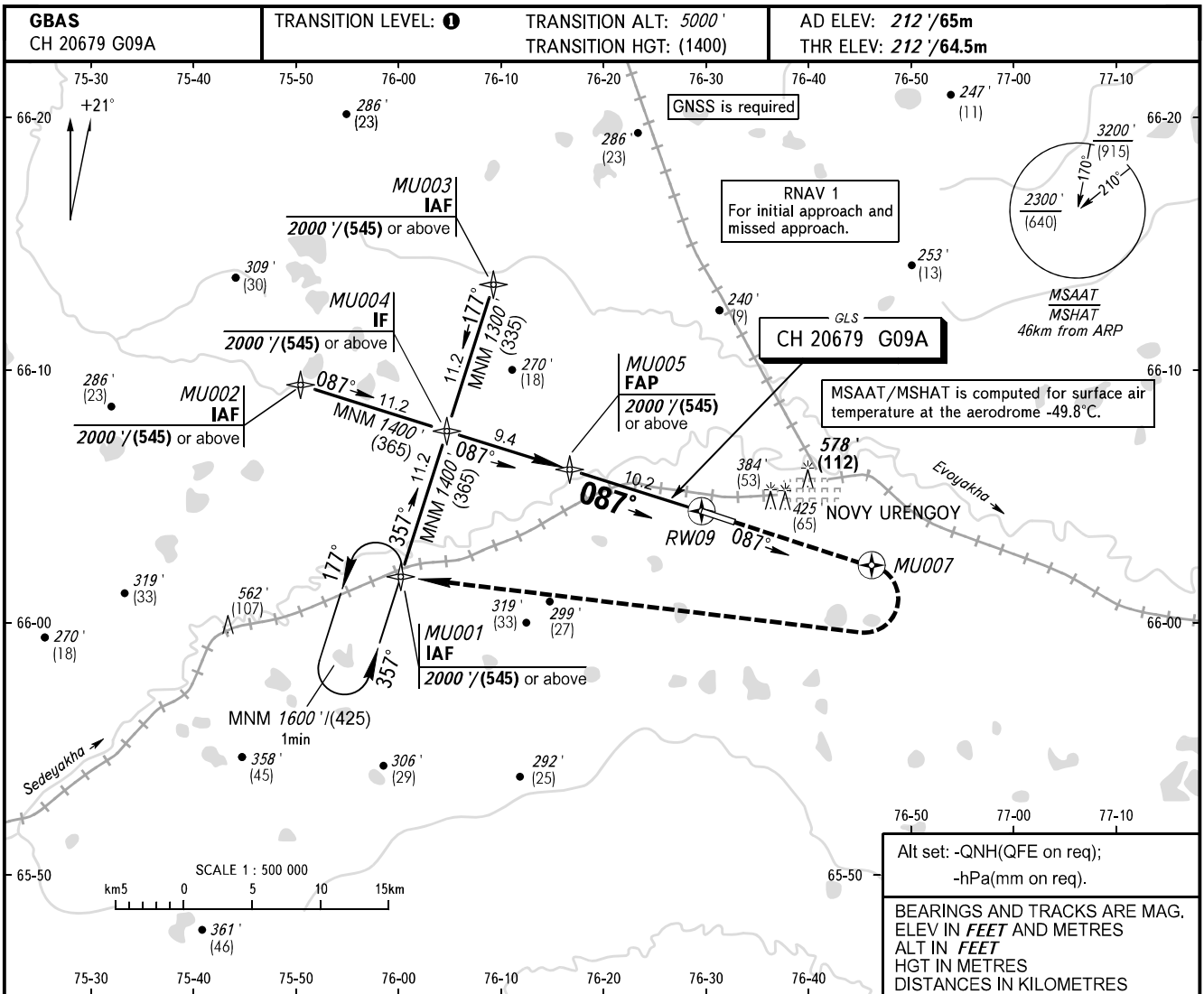


**INSTRUMENT  
APPROACH  
CHART - ICAO**

**NOVY URENGOY, RUSSIA**  
NOVY URENGOY  
GLS RWY 09

RADAR 124.700  
TOWER 121.900



OCA(H)		A	B	C	D	DL
Straight-in Approach	<b>CAT I</b>	349' (136') 107(42)	357' (144') 109(45)	367' (154') 112(48)	376' (163') 115(50)	378' (165') 116(51)
Circling		680' (470') 210(145)	720' (510') 220(155)	980' (760') 300(235)	980' (760') 300(235)	980' (760') 300(235)

**1** TRANSITION LEVEL:  
- FL060 when QNH is 1013 hPa (760mm mercury column) or above;  
- FL070 when QNH is 977 hPa (733mm mercury column) or above, but less than 1013 hPa (760mm mercury column);  
- FL080 when QNH is less than 977 hPa (733mm mercury column).

GROUND SPEED	km/h										
		150	180	210	240	270	300	330	360	390	
RATE OF DESCENT	m/s										
		2.2	2.6	3.1	3.5	3.9	4.4	4.8	5.2	5.7	
RATE OF DESCENT	ft/min										
		430	516	602	688	774	860	946	1031	1117	