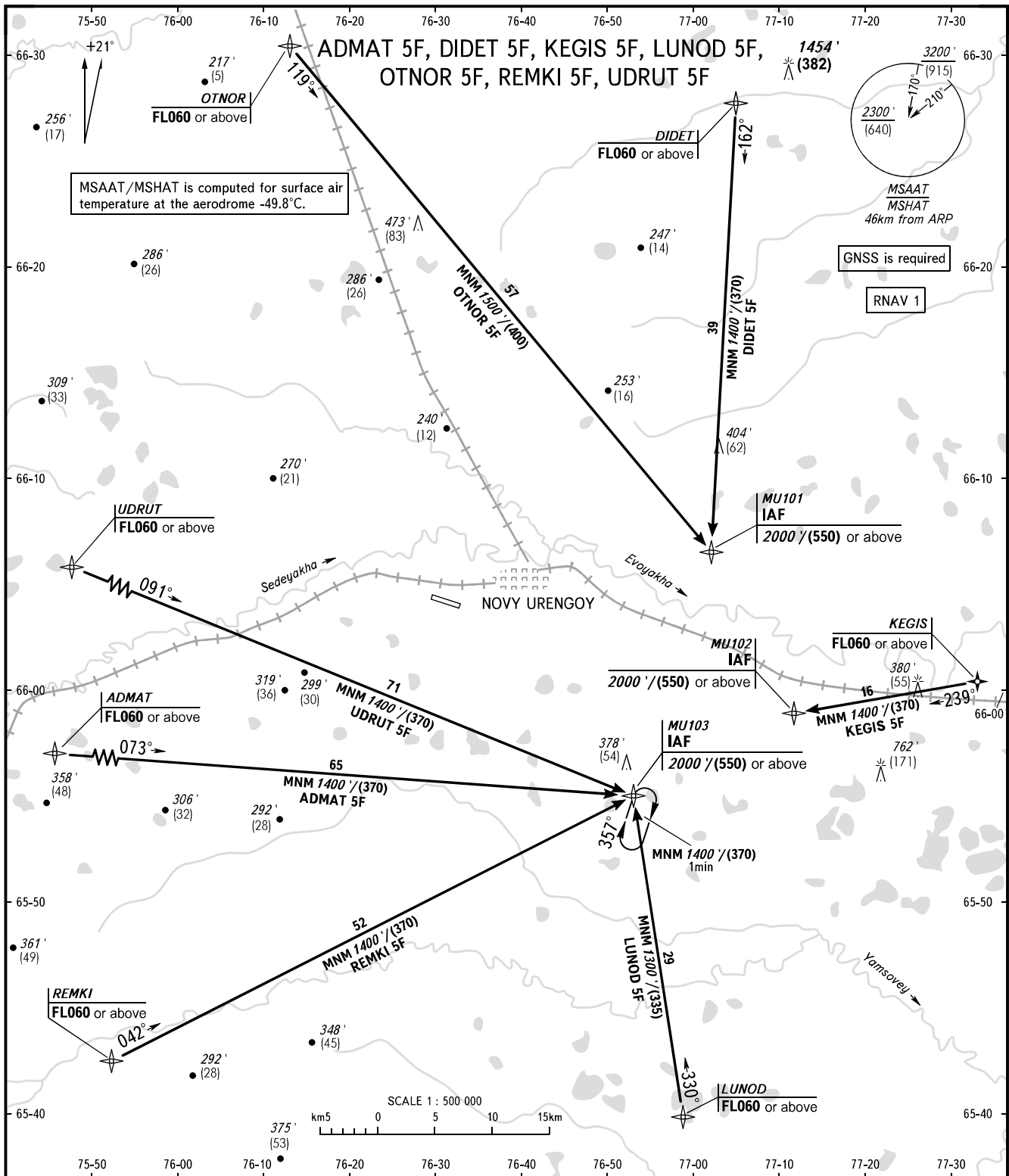


STANDARD ARRIVAL CHART  
INSTRUMENT (STAR) - ICAO

TRANSITION  
LEVEL : ①

NOVY URENGOY, RUSSIA  
NOVY URENGOY  
RNAV RWY 27



RADAR TOWER 124.700  
121.900

- ① TRANSITION LEVEL:
- FL060 when QNH is 1013 hPa (760mm mercury column) or above;
  - FL070 when QNH is 977 hPa (733mm mercury column) or above, but less than 1013 hPa (760mm mercury column);
  - FL080 when QNH is less than 977 hPa (733mm mercury column).

- WARNING:
1. Flight crew shall consider the influence of wind and atmospheric pressure on calculation of descent profile.
  2. Continuous descent operation (CDO) is applied if there is no conflicting traffic.
  3. Continuous descent operation (CDO) can be cancelled by ATS unit in case of necessity to provide separation.
  4. In case of intensive air traffic, ATS unit will issue next clearance to provide Continuous descent operation (CDO) in advance, as far as practicable.
  5. Altitude restrictions can be cancelled by ATS unit.

BEARINGS AND TRACKS ARE MAGNETIC  
ALTITUDES IN FEET  
ELEVATIONS IN FEET AND METRES  
HEIGHTS IN METRES  
DISTANCES IN KILOMETRES

Alt set: -QNH(QFE on req);  
-hPa(mm on req).