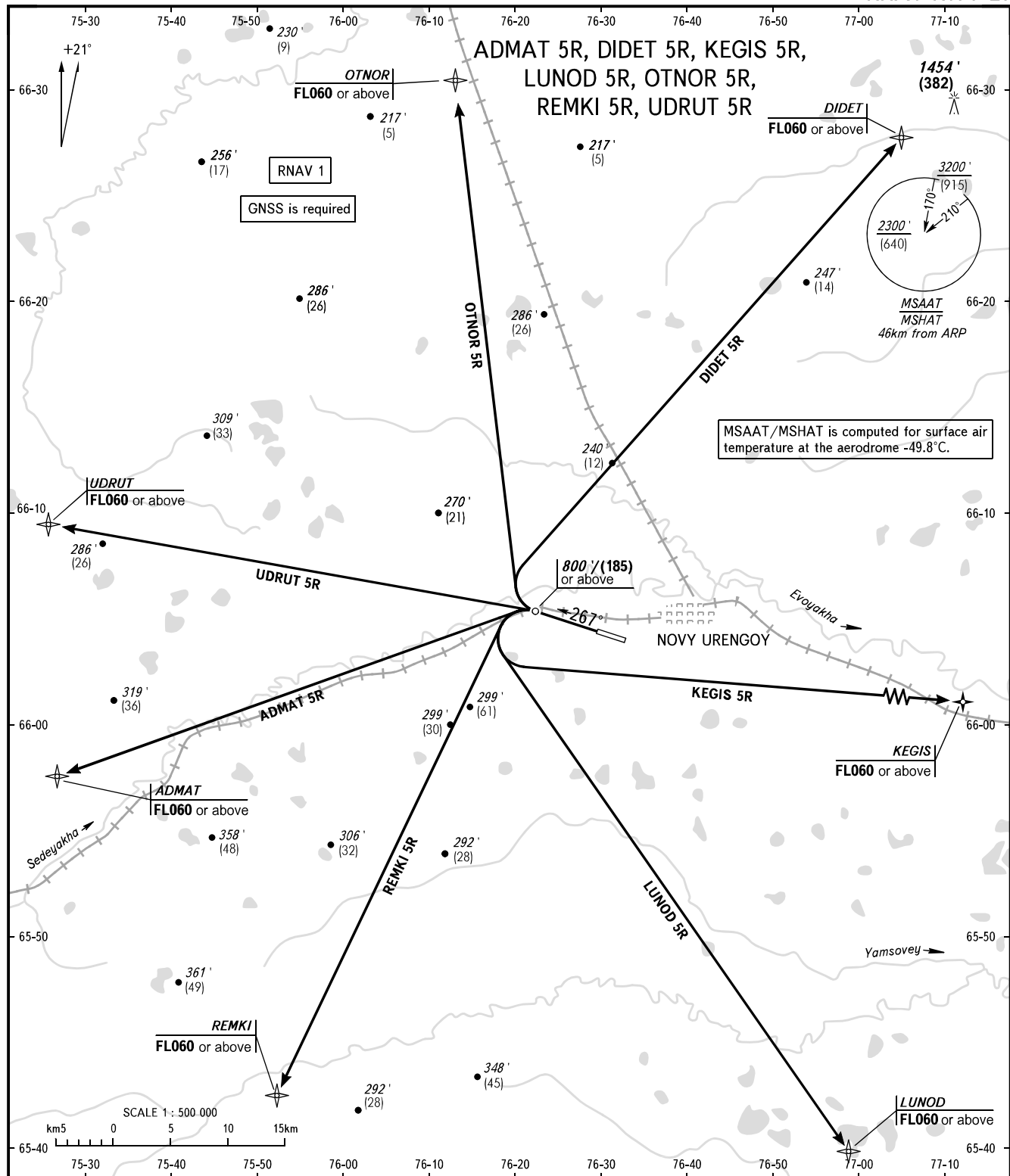


STANDARD DEPARTURE CHART
INSTRUMENT (SID) - ICAO

TRANSITION ALT: **5000'**
TRANSITION HGT: **(1400)**

NOVY URENGOY, RUSSIA
NOVY URENGOY
RNAV RWY 27



MSAAT/MSHAT is computed for surface air temperature at the aerodrome -49.8°C.

TOWER **121.900**
RADAR **124.700**

WARNING:

- The minimum climb gradients required due to the airspace structure:
 - 3.6% for SID ADMAT 5R up to FL060;
 - 3.5% for SID OTNOR 5R up to FL060;
 - 3.4% for SID REMKI 5R up to FL060;
 - 3.7% for SID UDRUT 5R up to FL060.
- Continuous climb operation (CCO) is applied in case of low air traffic intensity.
- Rate of climb can be assigned to flight crews to provide Continuous climb operation (CCO) in case of high air traffic intensity.

BEARINGS AND TRACKS ARE MAGNETIC
ALTITUDES IN **FEET**
ELEVATIONS IN **FEET** AND METRES
HEIGHTS IN METRES
DISTANCES IN KILOMETRES

Alt set: -QNH(QFE on req);
-hPa(mm on req).