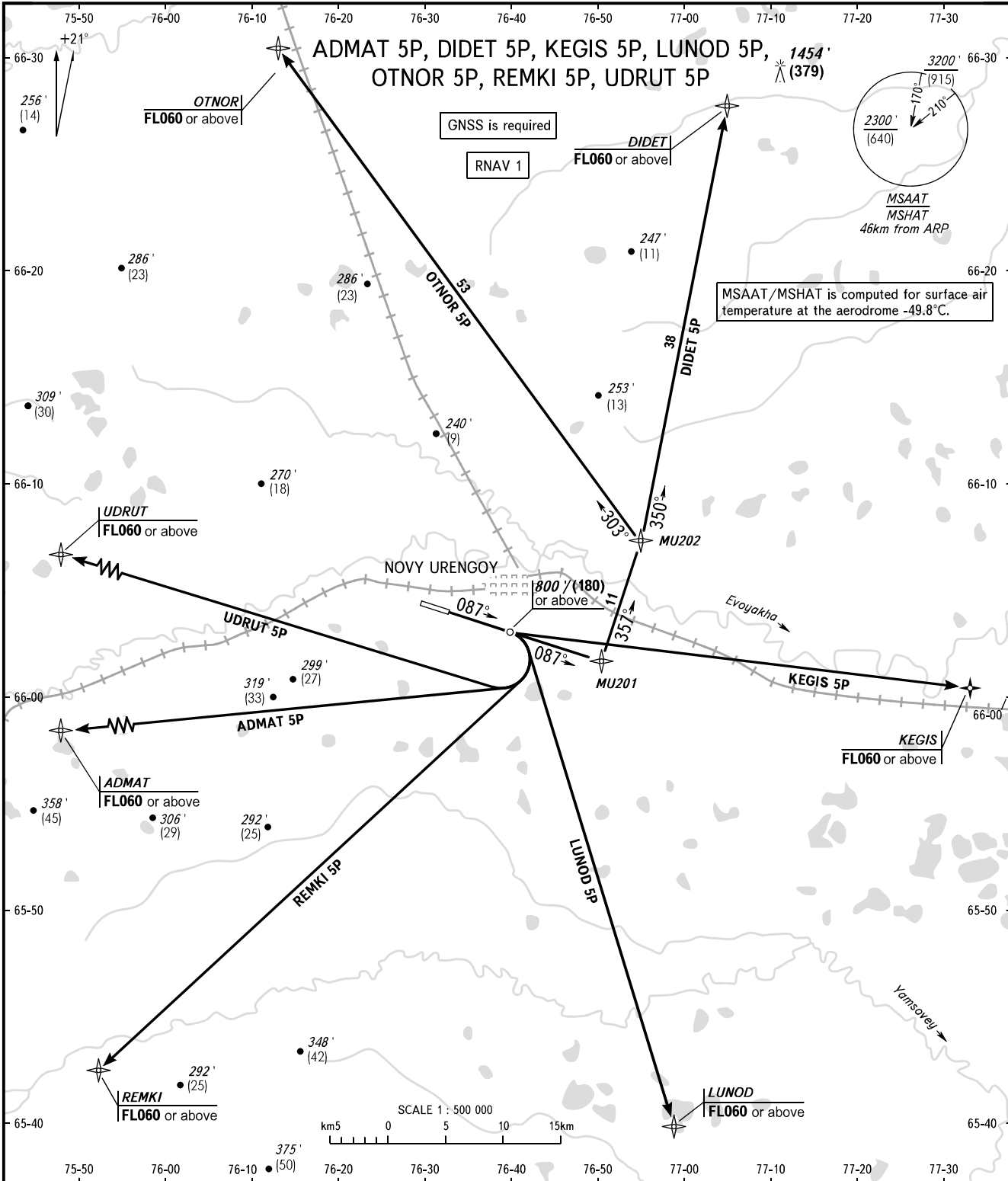


STANDARD DEPARTURE CHART  
INSTRUMENT (SID) - ICAO

TRANSITION ALT: 5000'  
TRANSITION HGT: (1400)

NOVY URENGOY, RUSSIA  
NOVY URENGOY  
RNAV RWY 09



TOWER 121.900  
RADAR 124.700

- WARNING:**
- The minimum climb gradients required due to the airspace structure:
    - 3.9% for SID KEGIS 5P up to FL060;
    - 3.6% for SID LUNOD 5P up to FL060.
  - Continuous climb operation (CCO) is applied in case of low air traffic intensity.
  - Rate of climb can be assigned to flight crews to provide Continuous climb operation (CCO) in case of high air traffic intensity.

BEARINGS AND TRACKS ARE MAGNETIC  
ALTITUDES IN FEET  
ELEVATIONS IN FEET AND METRES  
HEIGHTS IN METRES  
DISTANCES IN KILOMETRES

Alt set: -QNH(QFE on req);  
-hPa(mm on req).

CHANGE: COM