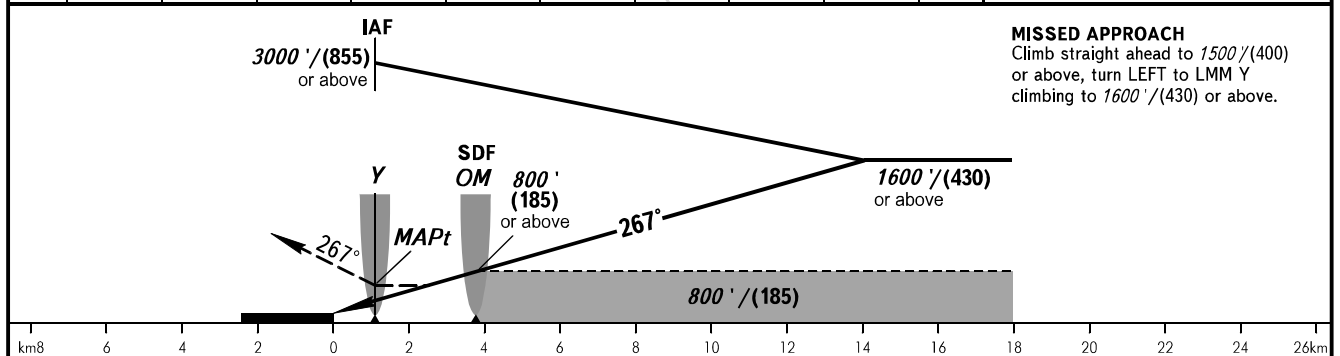
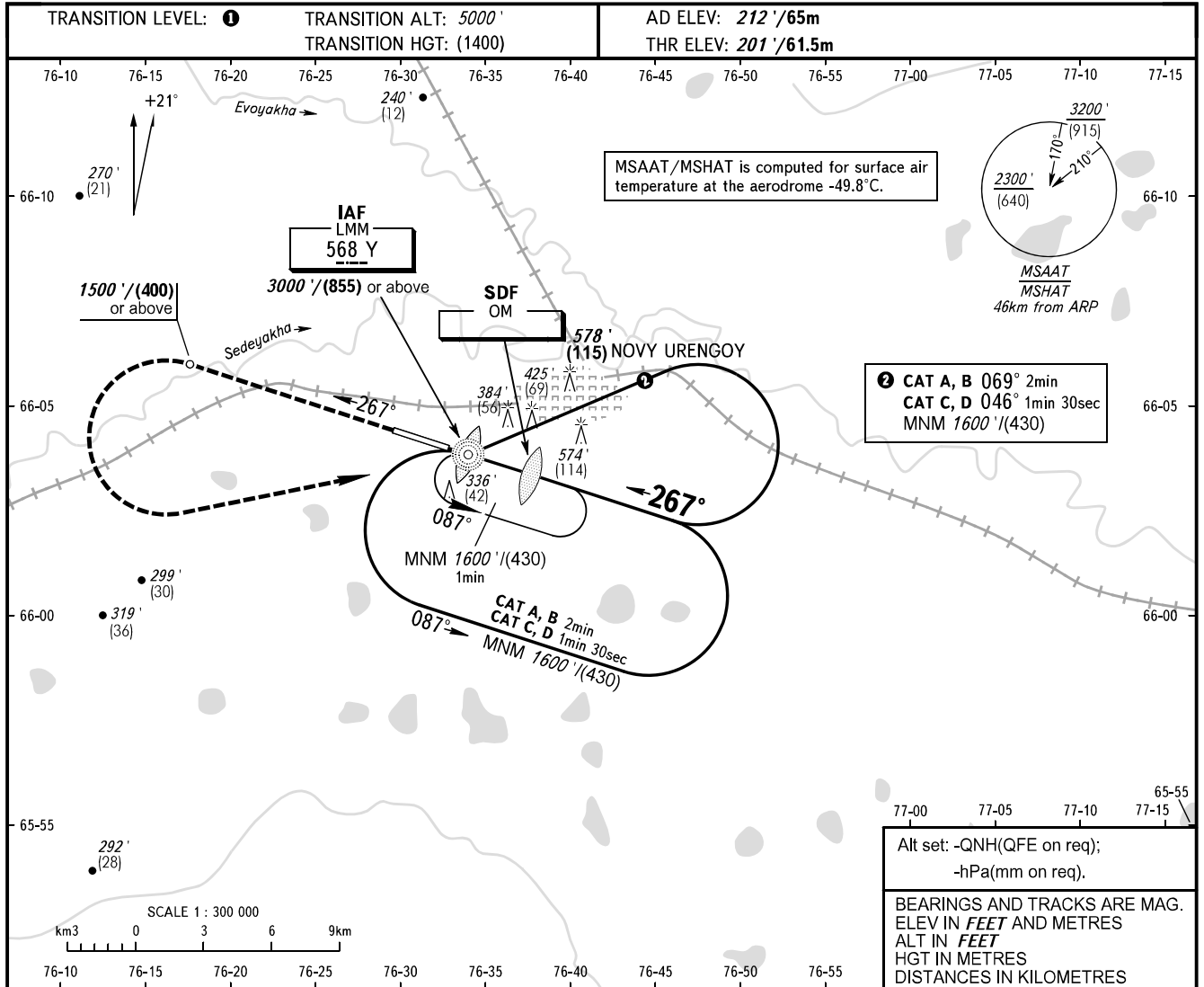


INSTRUMENT
APPROACH
CHART - ICAO

RADAR 124.700
TOWER 121.900

NOVY URENGOY, RUSSIA
NOVY URENGOY
NDB X RWY 27



MISSED APPROACH
Climb straight ahead to 1500' / (400) or above, turn LEFT to LMM Y climbing to 1600' / (430) or above.

| OCA(H) | | A | B | C | D |
|----------------------|----------|-------------------------|-------------------------|-------------------------|-------------------------|
| Straight-in Approach | With SDF | 590' (390') 180(120) | 590' (390') 180(120) | 590' (390') 180(120) | 590' (390') 180(120) |
| | WO SDF | 800' (600') 245(185) | 800' (600') 245(185) | 800' (600') 245(185) | 800' (600') 245(185) |
| Circling | | 800' (590') 245(180) | 800' (590') 245(180) | 980' (760') 300(235) | 980' (760') 300(235) |

① TRANSITION LEVEL:
- FL060 when QNH is 1013 hPa (760mm mercury column) or above;
- FL070 when QNH is 977 hPa (733mm mercury column) or above, but less than 1013 hPa (760mm mercury column);
- FL080 when QNH is less than 977 hPa (733mm mercury column).

WARNING
Turn before MAPt is PROHIBITED.