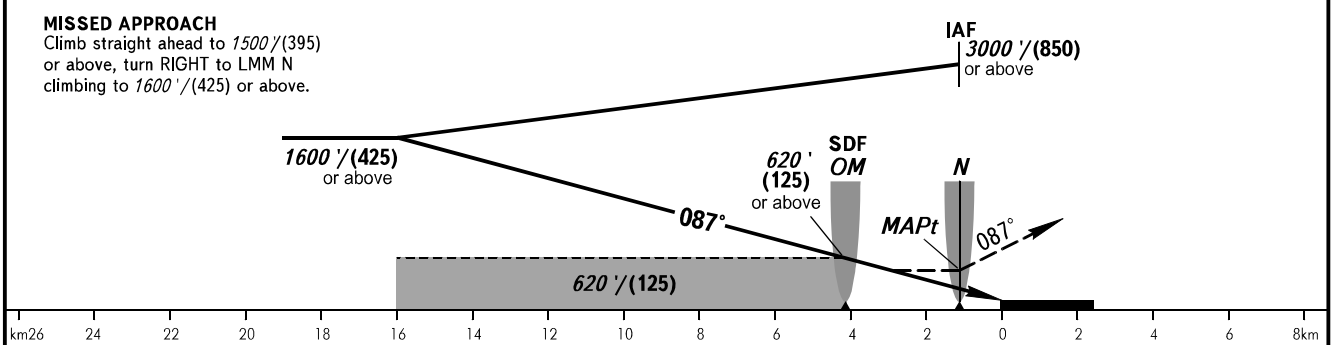
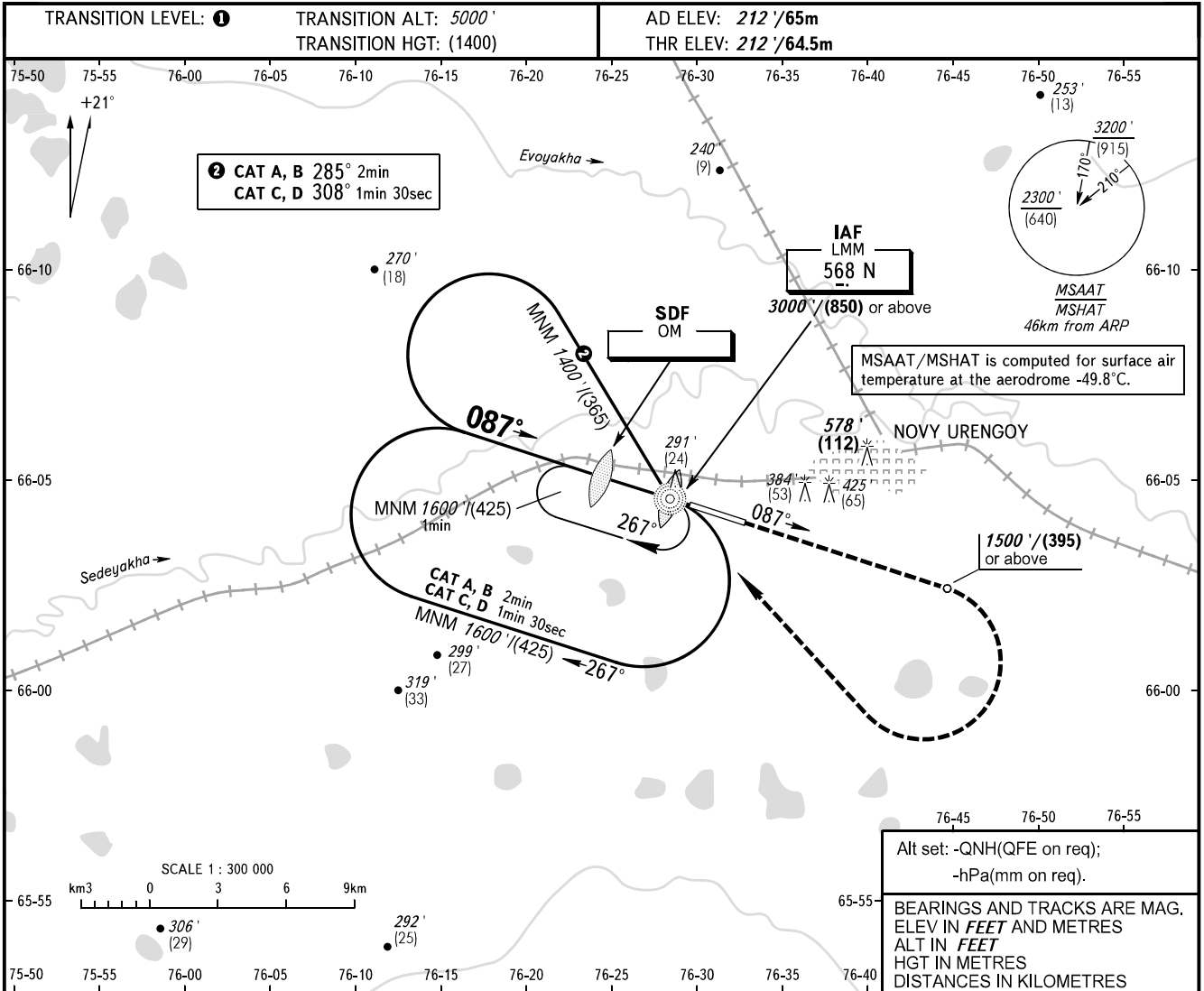


**INSTRUMENT  
APPROACH  
CHART - ICAO**

RADAR	124.700
TOWER	121.900

**NOVY URENGOY, RUSSIA**  
NOVY URENGOY  
NDB X RWY 09



OCA(H)		A	B	C	D
Straight-in Approach	With SDF	540' (330') 165(100)	540' (330') 165(100)	540' (330') 165(100)	540' (330') 165(100)
	WO SDF	620' (410') 190(125)	620' (410') 190(125)	620' (410') 190(125)	620' (410') 190(125)
Circling		680' (470') 210(145)	720' (510') 220(155)	980' (760') 300(235)	980' (760') 300(235)

**TRANSITION LEVEL:**  
 - FL060 when QNH is 1013 hPa (760mm mercury column) or above;  
 - FL070 when QNH is 977 hPa (733mm mercury column) or above, but less than 1013 hPa (760mm mercury column);  
 - FL080 when QNH is less than 977 hPa (733mm mercury column).

**WARNING**  
 Turn before MAPt is PROHIBITED.

CHANGE: COM