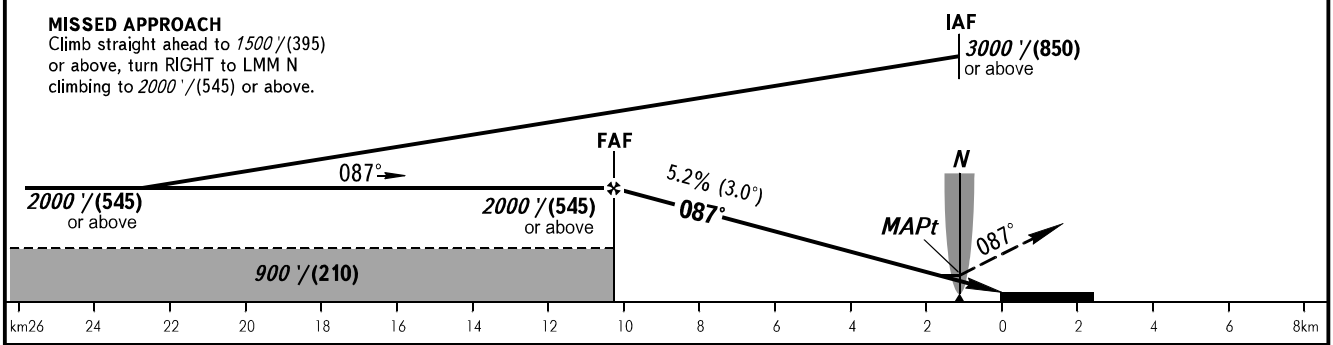
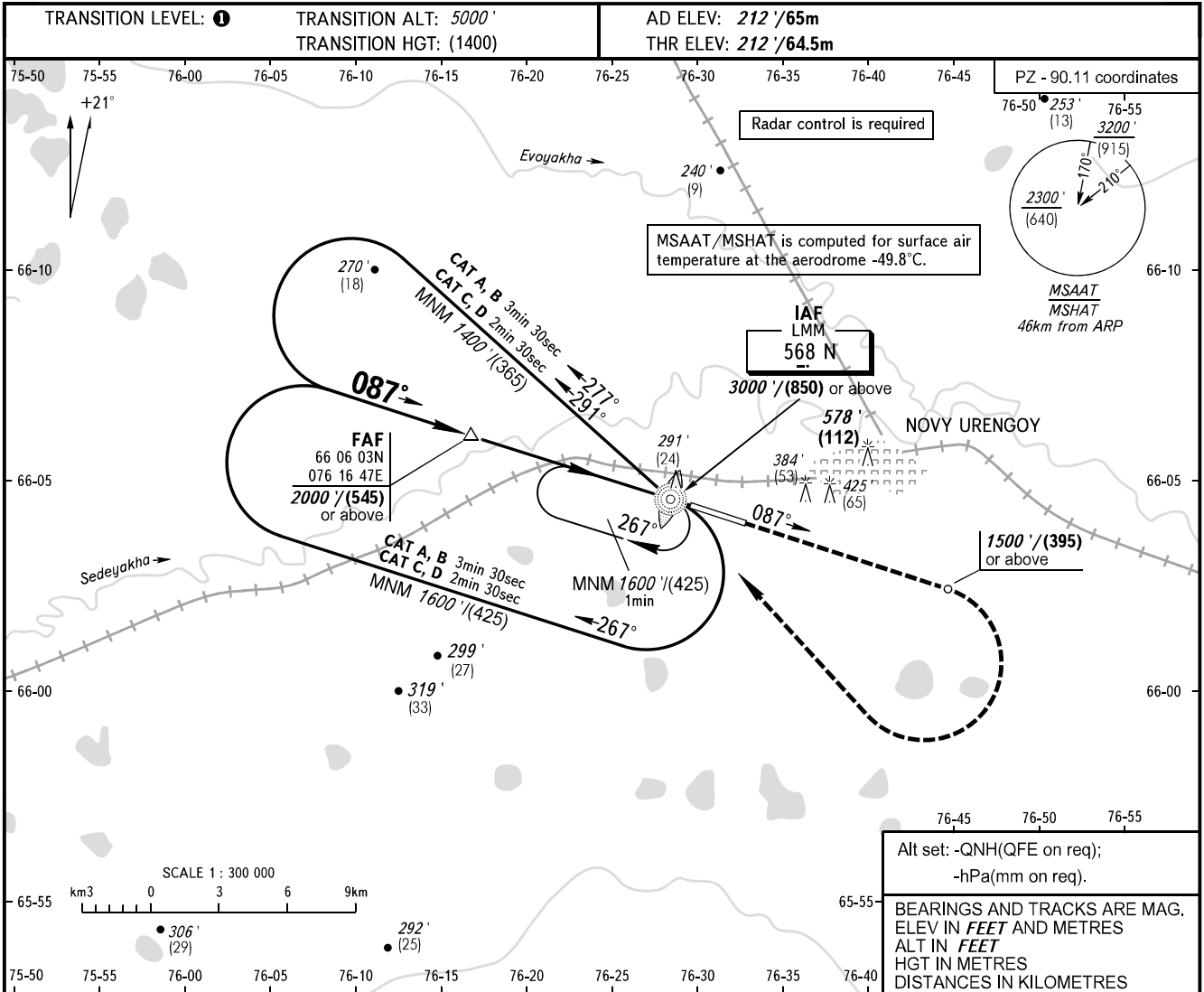


**INSTRUMENT
APPROACH
CHART - ICAO**

NOVY URENGOY, RUSSIA
NOVY URENGOY
NDB Y RWY 09

RADAR	124.700
TOWER	121.900



OCA(H)		A	B	C	D
Straight-in Approach	540' (330')	540' (330')	540' (330')	540' (330')	540' (330')
	165(100)	165(100)	165(100)	165(100)	165(100)
Circling		680' (470') 210(145)	720' (510') 220(155)	980' (760') 300(235)	980' (760') 300(235)

1 TRANSITION LEVEL:
- FL060 when QNH is 1013 hPa (760mm mercury column) or above;
- FL070 when QNH is 977 hPa (733mm mercury column) or above, but less than 1013 hPa (760mm mercury column);
- FL080 when QNH is less than 977 hPa (733mm mercury column).

WARNING:
1. MAPt at LMM N. Timing not authorized for defining MAPt.
2. Turn before MAPt is PROHIBITED.

GROUND SPEED	km/h	150	180	210	240	270	300	330	360	390
	kt	81	97	113	130	146	162	178	194	211
RATE OF DESCENT	m/s	2.2	2.6	3.1	3.5	3.9	4.4	4.8	5.2	5.7
	ft/min	430	516	602	688	774	860	946	1031	1117

CHANGE: COM