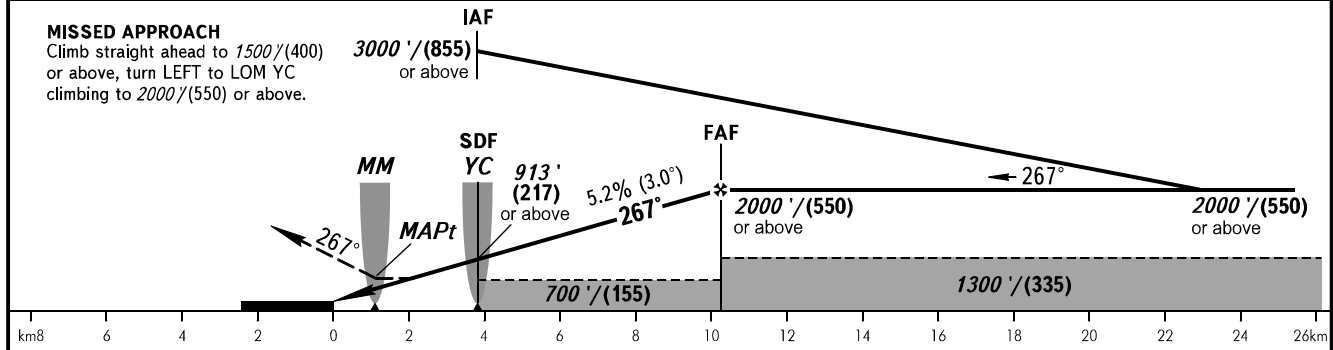
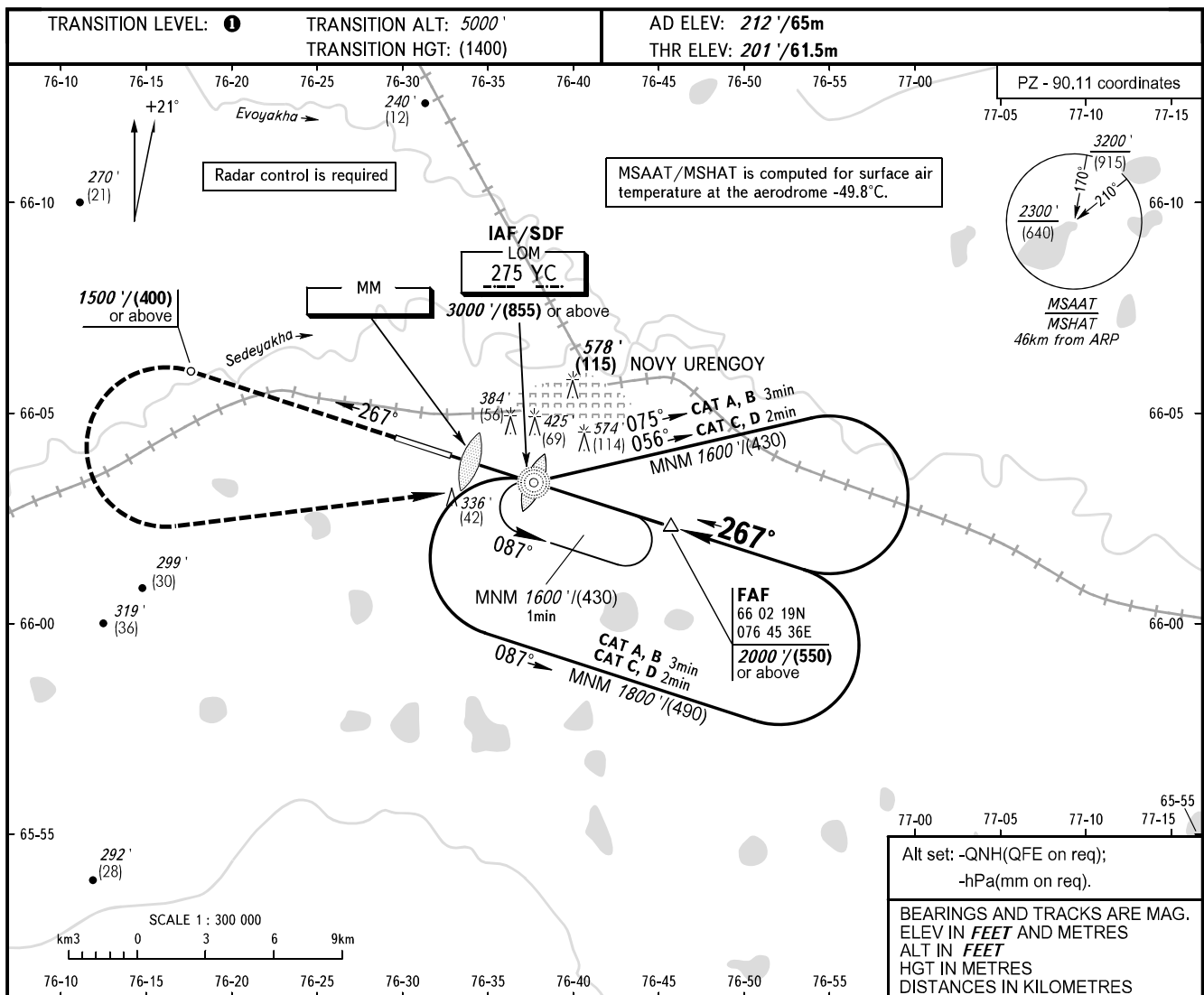


**INSTRUMENT
APPROACH
CHART - ICAO**

RADAR	124.700
TOWER	121.900

NOVY URENGOY, RUSSIA
NOVY URENGOY
NDB Z RWY 27



OCA(H)		A	B	C	D					
Straight-in Approach	With SDF	590' (390') 180(120)	590' (390') 180(120)	590' (390') 180(120)	590' (390') 180(120)					
	WO SDF	700' (500') 215(155)	700' (500') 215(155)	700' (500') 215(155)	700' (500') 215(155)					
Circling		700' (490') 215(150)	720' (510') 220(155)	980' (760') 300(235)	980' (760') 300(235)					
GROUND SPEED	km/h	150	180	210	240	270	300	330	360	390
	kt	81	97	113	130	146	162	178	194	211
RATE OF DESCENT	m/s	2.2	2.6	3.1	3.5	3.9	4.4	4.8	5.2	5.7
	ft/min	430	516	602	688	774	860	946	1031	1117

1 TRANSITION LEVEL:
- FL060 when QNH is 1013 hPa (760mm mercury column) or above;
- FL070 when QNH is 977 hPa (733mm mercury column) or above, but less than 1013 hPa (760mm mercury column);
- FL080 when QNH is less than 977 hPa (733mm mercury column).

WARNING:
1. MAPt at MM. Timing not authorized for defining MAPt.
2. Turn before MAPt is PROHIBITED.