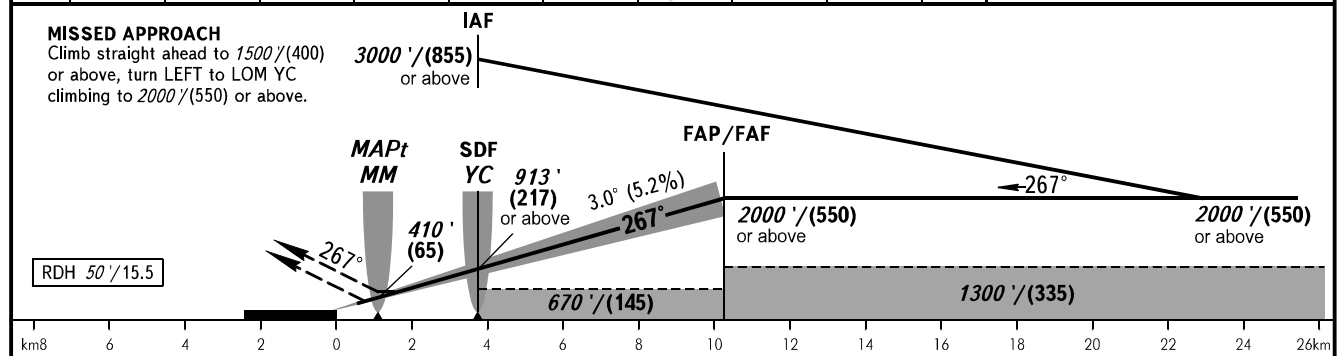
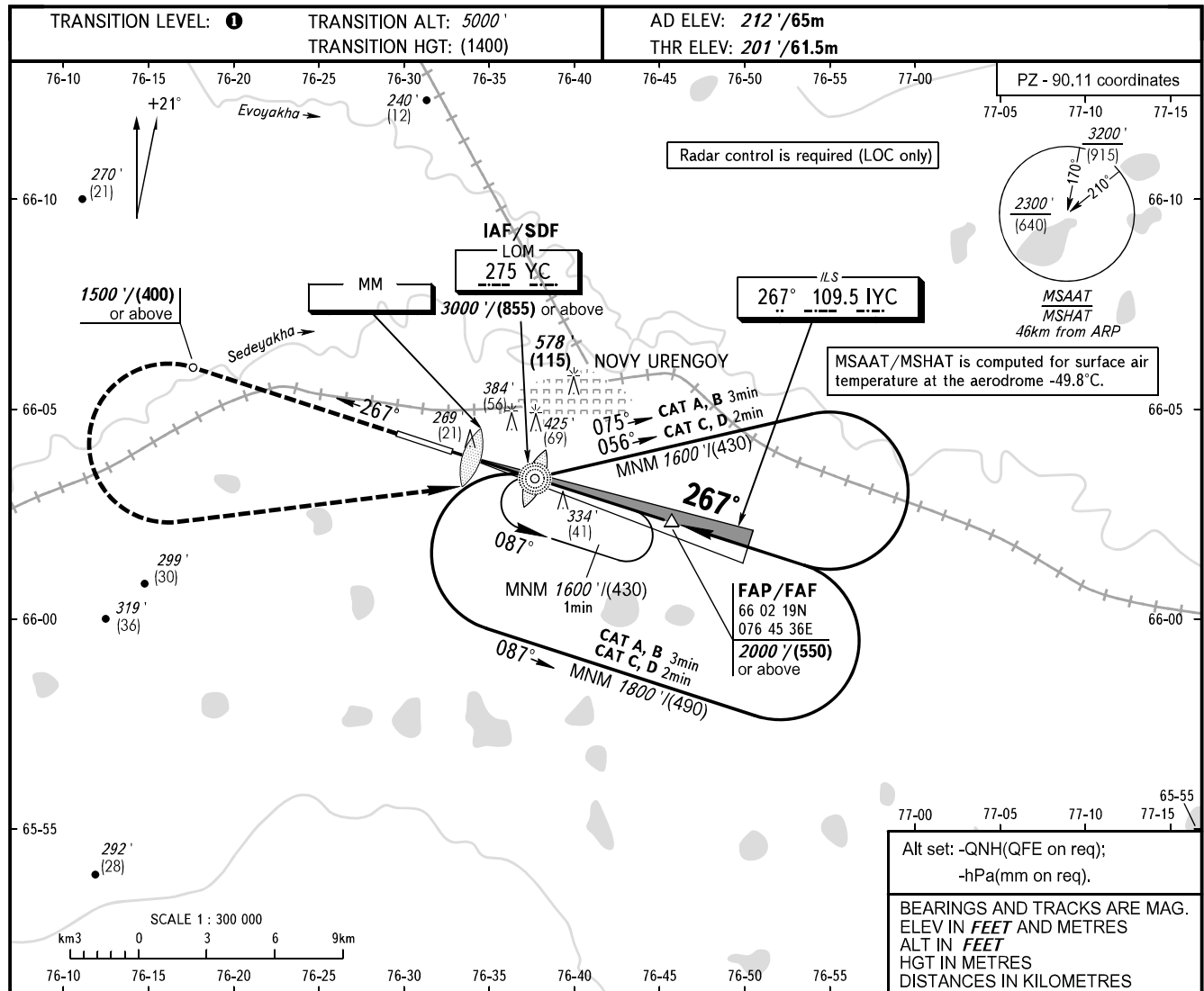


**INSTRUMENT  
APPROACH  
CHART - ICAO**

RADAR 124.700  
TOWER 121.900

**NOVY URENGOY, RUSSIA  
NOVY URENGOY  
ILS Y CAT I, LOC Y RWY 27**



OCA(H)		A	B	C	D	DL						
Straight-in Approach	<b>CAT I</b>	339' (139') 104(42)	348' (148') 107(45)	358' (158') 110(48)	371' (171') 114(52)	374' (174') 114(53)						
	<b>LOC</b>											
	<b>With SDF</b>	500' (300') 155(95)	500' (300') 155(95)	500' (300') 155(95)	500' (300') 155(95)	500' (300') 155(95)						
	<b>WO SDF</b>	670' (470') 205(145)	670' (470') 205(145)	670' (470') 205(145)	670' (470') 205(145)	670' (470') 205(145)						
Circling		680' (470') 210(145)	720' (510') 220(155)	980' (760') 300(235)	980' (760') 300(235)	980' (760') 300(235)						
GROUND SPEED		km/h		150	180	210	240	270	300	330	360	390
		kt		81	97	113	130	146	162	178	194	211
RATE OF DESCENT		m/s		2.2	2.6	3.1	3.5	3.9	4.4	4.8	5.2	5.7
		ft/min		430	516	602	688	774	860	946	1031	1117

**1** TRANSITION LEVEL:  
- FL060 when QNH is 1013 hPa (760mm mercury column) or above;  
- FL070 when QNH is 977 hPa (733mm mercury column) or above, but less than 1013 hPa (760mm mercury column);  
- FL080 when QNH is less than 977 hPa (733mm mercury column).

**WARNING:**  
1. MAPt at MM. Timing not authorized for defining MAPt.  
2. Turn before MAPt is PROHIBITED.