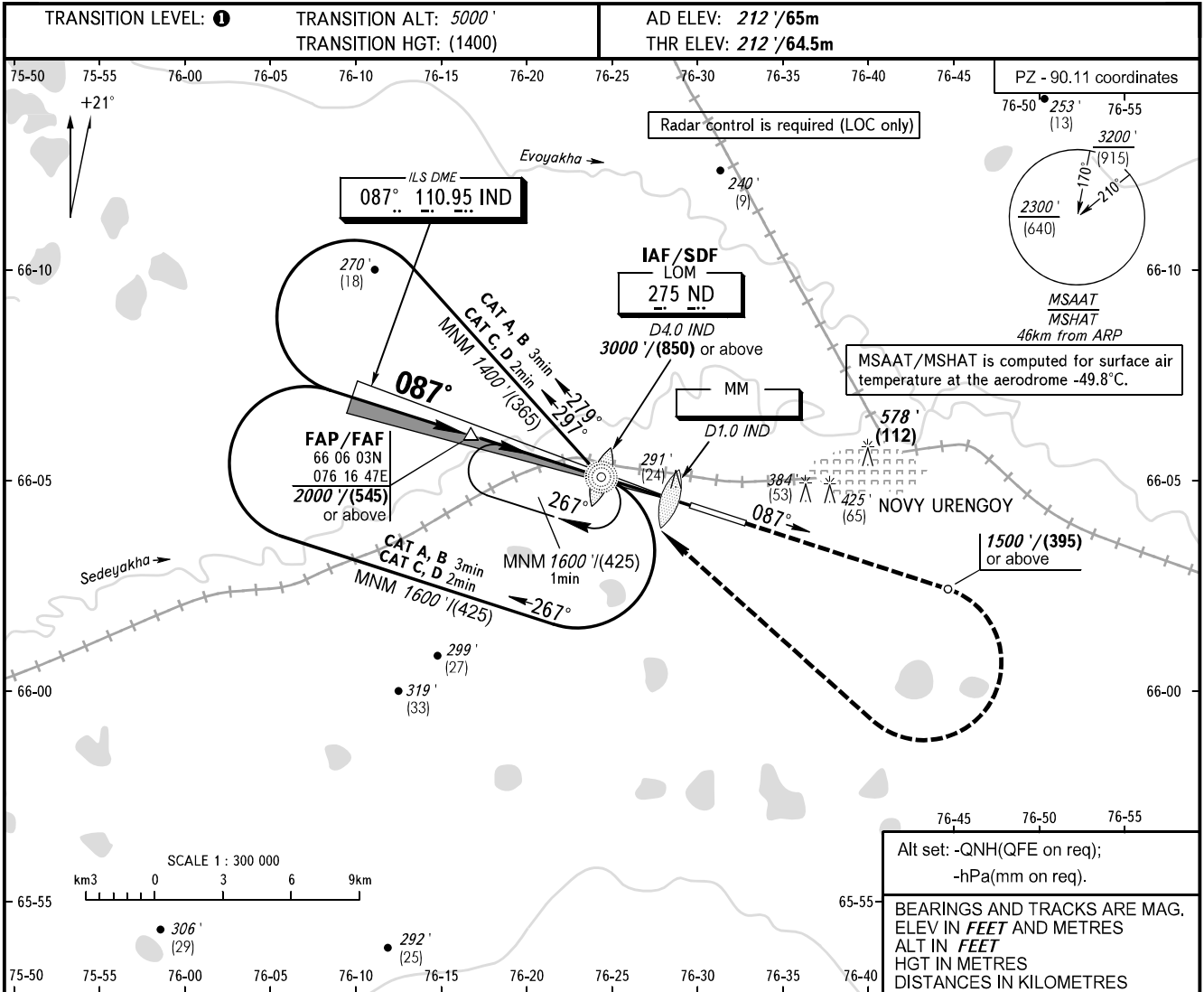


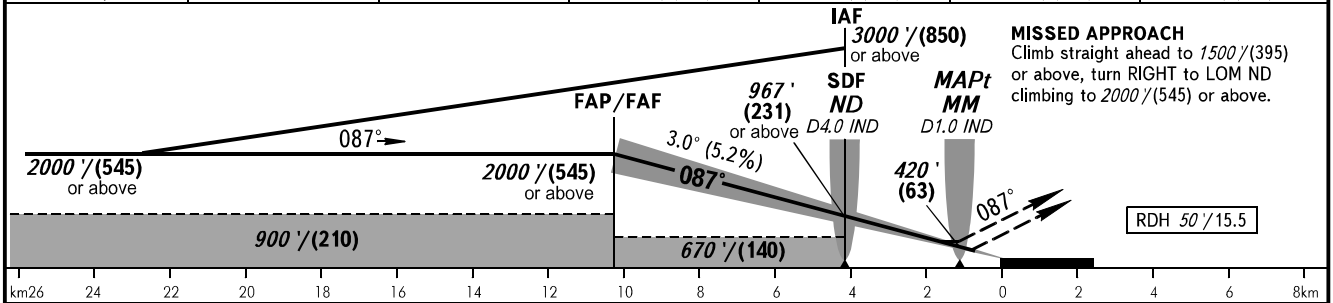
**INSTRUMENT  
APPROACH  
CHART - ICAO**

RADAR 124.700  
TOWER 121.900

**NOVY URENGOY, RUSSIA**  
NOVY URENGOY  
ILS Y CAT I, LOC Y RWY 09



DME IND	10.2	10.0	8.0	6.0	4.0	2.0
ALTITUDE/HEIGHT	2000' (545)	1982' (539)	1638' (435)	1294' (330)	950' (225)	606' (120)



OCA(H)		A	B	C	D	DL	
Straight-in Approach	<b>CAT I</b>	349' (136') 107(42)	357' (144') 109(45)	367' (154') 112(48)	376' (163') 115(50)	378' (165') 116(51)	
	<b>LOC</b>	<b>With SDF</b>	490' (280') 150(85)	490' (280') 150(85)	490' (280') 150(85)	490' (280') 150(85)	490' (280') 150(85)
	<b>WO SDF</b>	670' (460') 205(140)	670' (460') 205(140)	670' (460') 205(140)	670' (460') 205(140)	670' (460') 205(140)	
Circling		680' (470') 210(145)	720' (510') 220(155)	980' (760') 300(235)	980' (760') 300(235)	980' (760') 300(235)	

**TRANSITION LEVEL:**  
- FL060 when QNH is 1013 hPa (760mm mercury column) or above;  
- FL070 when QNH is 977 hPa (733mm mercury column) or above, but less than 1013 hPa (760mm mercury column);  
- FL080 when QNH is less than 977 hPa (733mm mercury column).

**WARNING:**  
1. MAPt at MM. Timing not authorized for defining MAPt.  
2. Zero range of DME IND is indicated at RWY 09 THR.  
3. Turn before MAPt is PROHIBITED.

GROUND SPEED	km/h	150	180	210	240	270	300	330	360	390
	kt	81	97	113	130	146	162	178	194	211
RATE OF DESCENT	m/s	2.2	2.6	3.1	3.5	3.9	4.4	4.8	5.2	5.7
	ft/min	430	516	602	688	774	860	946	1031	1117

CHANGE: COM