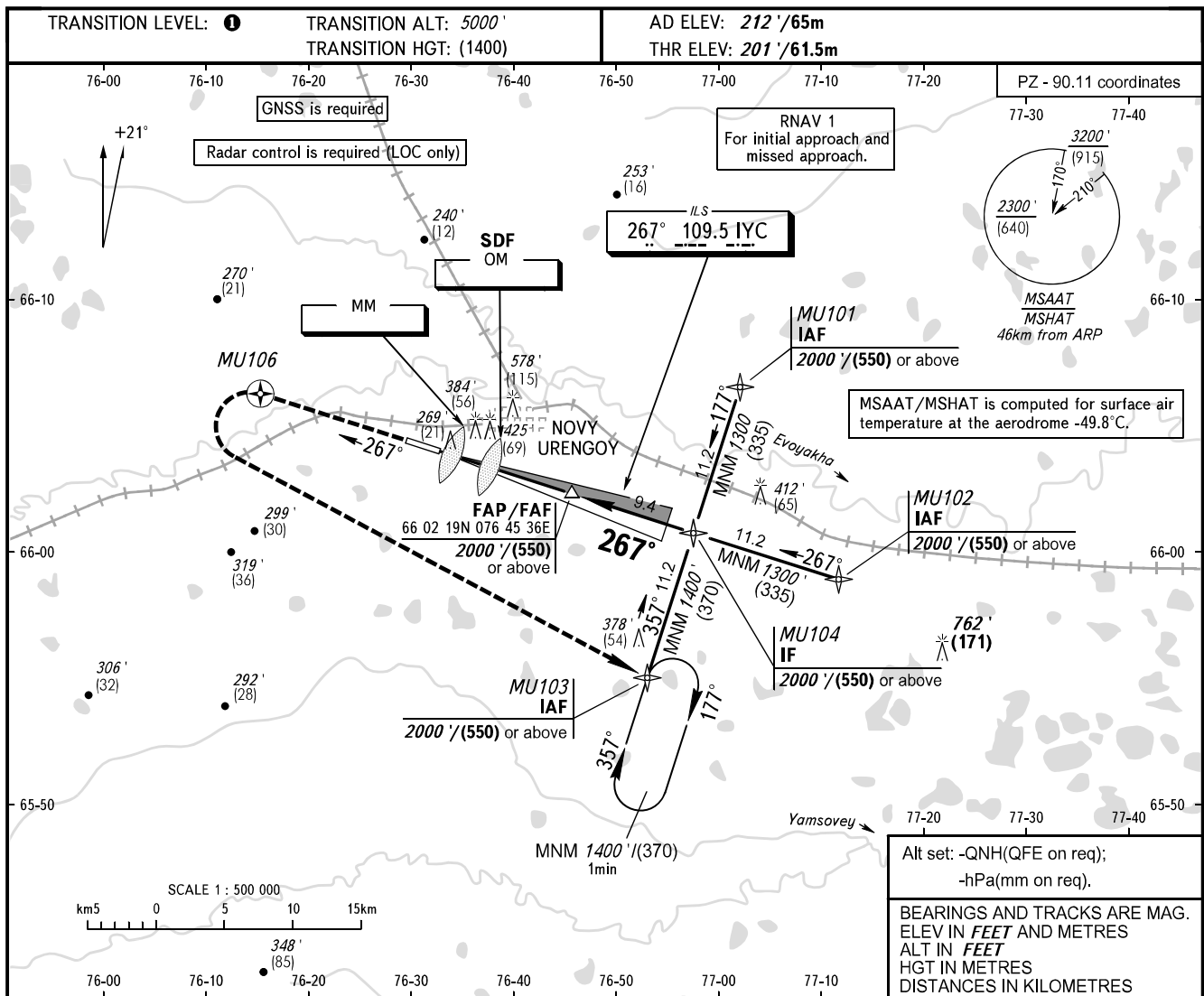


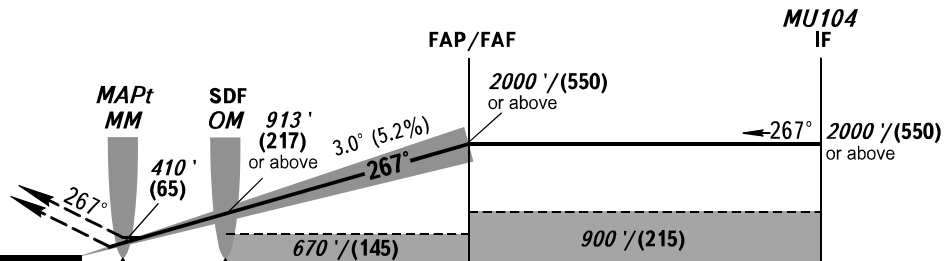
INSTRUMENT
APPROACH
CHART - ICAO

RADAR 124.700
TOWER 121.900

NOVY URENGOY, RUSSIA
NOVY URENGOY
ILS Z CAT I, LOC Z RWY 27



MISSED APPROACH
Climb straight ahead to MU106,
turn LEFT to MU103 climbing to
2000'/(550) or above.



OCA(H)		A	B	C	D	DL	
Straight-in Approach	CAT I	339' (139') 104(42)	348' (148') 107(45)	358' (158') 110(48)	371' (171') 114(52)	374' (174') 114(53)	
	LOC	With SDF	500' (300') 155(95)	500' (300') 155(95)	500' (300') 155(95)	500' (300') 155(95)	500' (300') 155(95)
		WO SDF	670' (470') 205(145)	670' (470') 205(145)	670' (470') 205(145)	670' (470') 205(145)	670' (470') 205(145)
Circling		680' (470') 210(145)	720' (510') 220(155)	980' (760') 300(235)	980' (760') 300(235)	980' (760') 300(235)	

TRANSITION LEVEL:
- FL060 when QNH is 1013 hPa (760mm mercury column) or above;
- FL070 when QNH is 977 hPa (733mm mercury column) or above, but less than 1013 hPa (760mm mercury column);
- FL080 when QNH is less than 977 hPa (733mm mercury column).
WARNING:
1. MAPt at MM. Timing not authorized for defining MAPt.
2. Turn before MAPt is PROHIBITED.

GROUND SPEED	km/h										
		150	180	210	240	270	300	330	360	390	
		81	97	113	130	146	162	178	194	211	
RATE OF DESCENT	m/s										
		2.2	2.6	3.1	3.5	3.9	4.4	4.8	5.2	5.7	
		430	516	602	688	774	860	946	1031	1117	